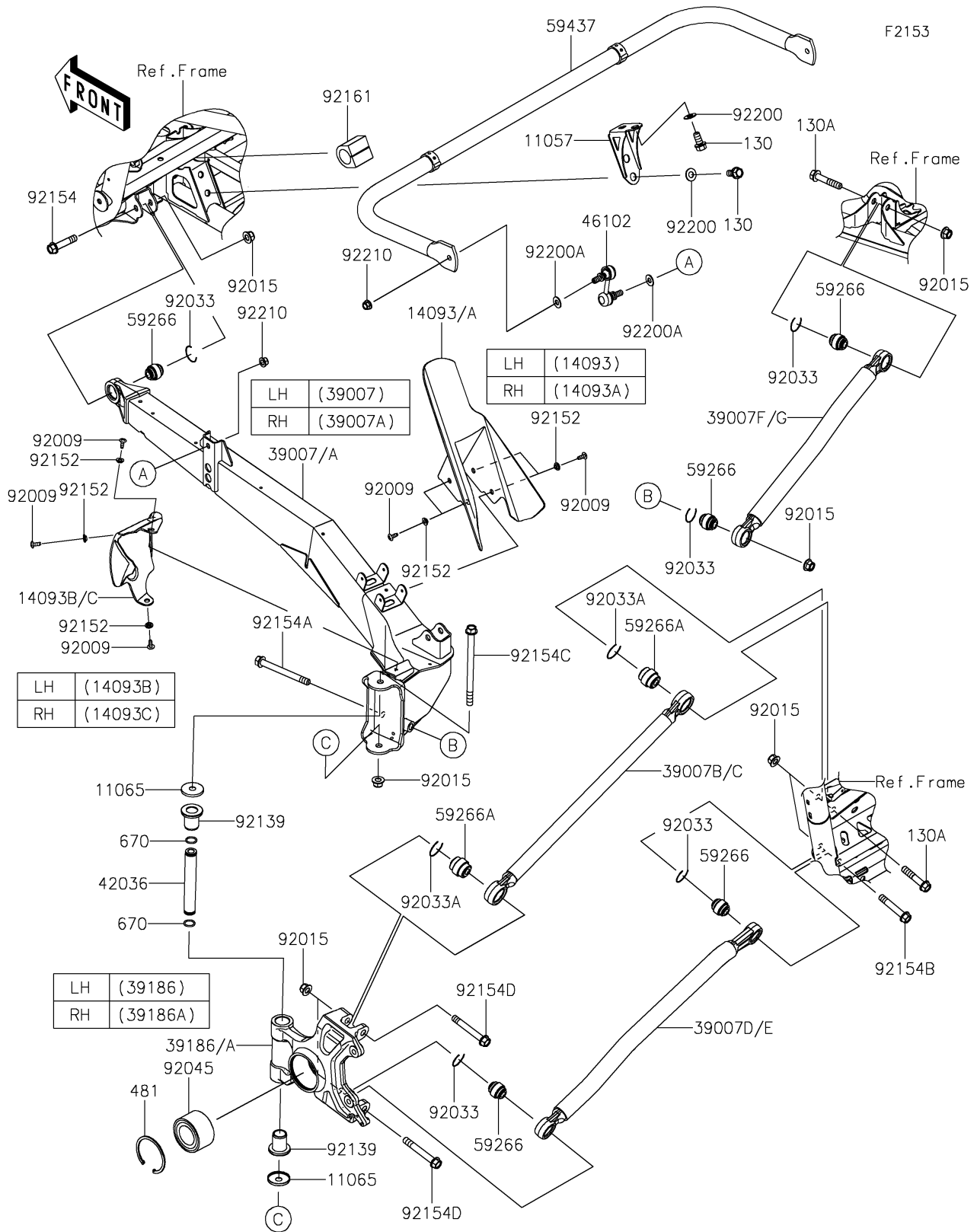


2025 Teryx KRX4 1000 PARTS DIAGRAM

Rear Suspension



2025 Teryx KRX4 1000 PARTS LIST

Rear Suspension

ITEM NAME	PART NUMBER	QUANTITY
BRACKET (Ref # 11057)	11057-7670	2
CAP (Ref # 11065)	11065-1305	4
COVER,RR SHOCK,LH (Ref # 14093)	14093-0955	1
COVER,RR SHOCK,RH (Ref # 14093A)	14093-0956	1
COVER,TRAILING ARM,LH (Ref # 14093B)	14093-0994	1
COVER,TRAILING ARM,RH (Ref # 14093C)	14093-0995	1
ARM-SUSP,TRAILING,LH,BLACK (Ref # 39007)	39007-0468-10	1
ARM-SUSP,TRAILING,RH,BLACK (Ref # 39007A)	39007-0469-10	1
ARM-SUSP,CONTROL,RR,UPP,V.BLUE (Ref # 39007B)	39007-0470-57G	2
ARM-SUSP,CONTROL,RR,UPP,TRQ (Ref # 39007C)	39007-0470-72G	2
ARM-SUSP,CONTROL,RR,LWR,V.BLUE (Ref # 39007D)	39007-0471-57G	2
ARM-SUSP,CONTROL,RR,LWR,TRQ (Ref # 39007E)	39007-0471-72G	2
ARM-SUSP,CONTROL,FR,V.BLUE (Ref # 39007F)	39007-0472-57G	2
ARM-SUSP,CONTROL,FR,TURQUOISE (Ref # 39007G)	39007-0472-72G	2
KNUCKLE,RR,LH (Ref # 39186)	39186-0325	1
KNUCKLE,RR,RH (Ref # 39186A)	39186-0326	1
SLEEVE,12.1X22X147 (Ref # 42036)	42036-0837	2
ROD,STABILIZER (Ref # 46102)	46102-0638	2
JOINT-BALL (Ref # 59266)	59266-0747	10
JOINT-BALL (Ref # 59266A)	59266-0748	4
STABILIZER,RR (Ref # 59437)	59437-0028	1
SCREW,TAPPING,6X16 (Ref # 92009)	92009-1166	14
NUT,LOCK,FLANGED,12MM (Ref # 92015)	92015-1433	16
RING-SNAP (Ref # 92033)	92033-0802	10
RING-SNAP (Ref # 92033A)	92033-0803	4
BEARING-BALL,40X74X42 (Ref # 92045)	92045-0920	2
BUSHING (Ref # 92139)	92139-0938	4
COLLAR,6.3X9.5X4.1 (Ref # 92152)	92152-1571	14
BOLT,FLANGED,12X55 (Ref # 92154)	92154-0289	2

2025 Teryx KRX4 1000 PARTS LIST

Rear Suspension

ITEM NAME	PART NUMBER	QUANTITY
BOLT,FLANGED,12X117 (Ref # 92154A)	92154-0867	2
BOLT,FLANGED,12X68 (Ref # 92154B)	92154-3927	2
BOLT,FLANGED,12X175 (Ref # 92154C)	92154-3928	2
BOLT,FLANGED,12X86 (Ref # 92154D)	92154-3929	4
DAMPER (Ref # 92161)	92161-2455	2
WASHER,12.1X25X1.6 (Ref # 92200)	92200-0455	8
WASHER,10.3X23X1.6 (Ref # 92200A)	92200-0724	4
NUT,LOCK,FLANGED,10MM (Ref # 92210)	92210-1080	4
BOLT-FLANGED,12X25 (Ref # 130)	130CA1225	8
BOLT-FLANGED,12X60 (Ref # 130A)	130CA1260	4
CIRCLIP-TYPE-C (Ref # 481)	481J7500	2
O RING,18MM (Ref # 670)	670B2018	4