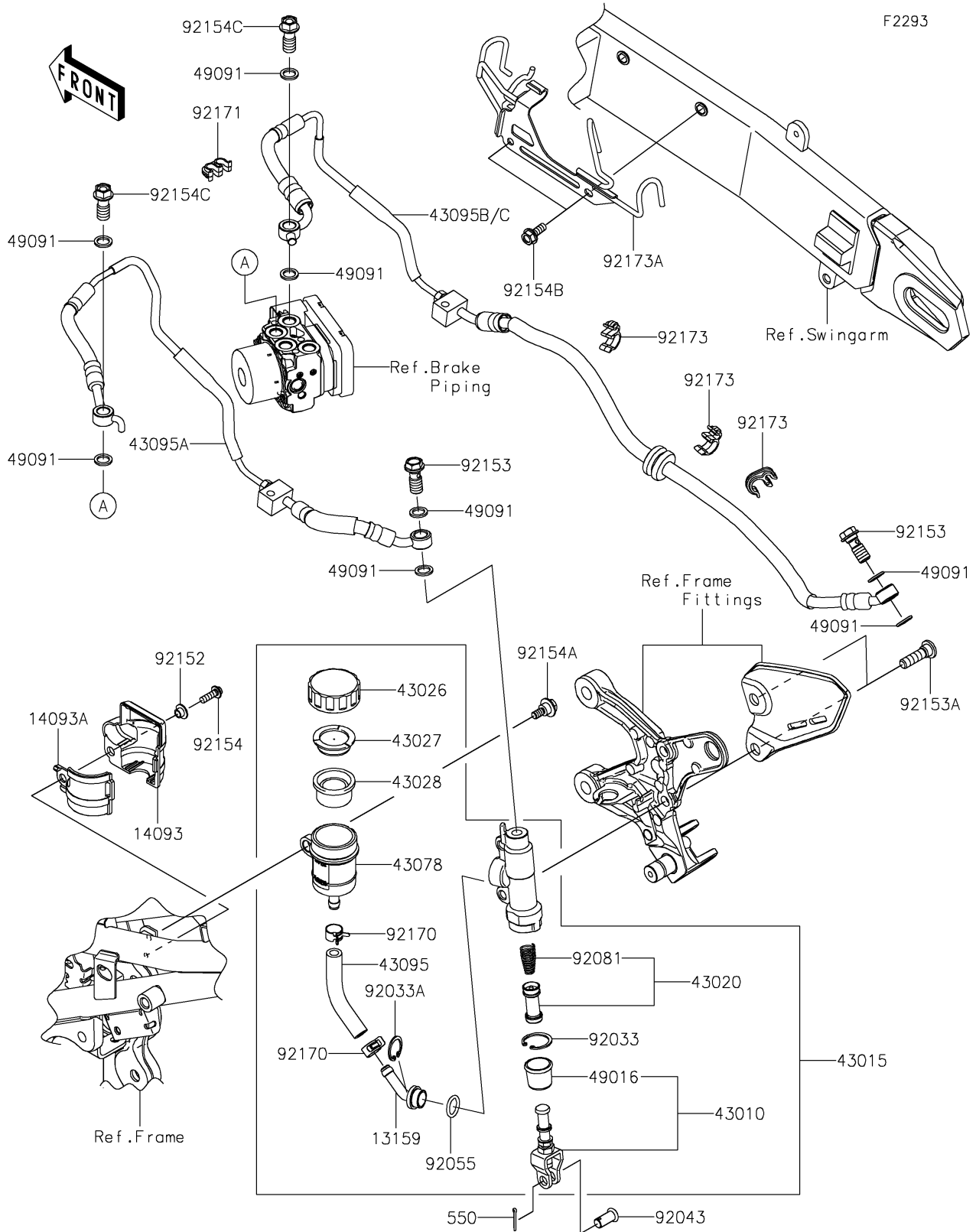


2023 Z900RS SE PARTS DIAGRAM

Rear Master Cylinder



2023 Z900RS SE PARTS LIST

Rear Master Cylinder

| ITEM NAME | PART NUMBER | QUANTITY |
|---|-------------|----------|
| CONNECTOR (Ref # 13159) | 13159-0008 | 1 |
| COVER,RR RESERVOIR,OUTER (Ref # 14093) | 14093-0653 | 1 |
| COVER,RR RESERVOIR,INNER (Ref # 14093A) | 14093-0654 | 1 |
| ROD-ASSY-BRAKE (Ref # 43010) | 43010-0020 | 1 |
| CYLINDER-ASSY-MASTER,RR (Ref # 43015) | 43015-0664 | 1 |
| PISTON-COMP-BRAKE (Ref # 43020) | 43020-1057 | 1 |
| CAP-BRAKE (Ref # 43026) | 43026-0009 | 1 |
| PLATE-DIAPHRAGM (Ref # 43027) | 43027-1053 | 1 |
| DIAPHRAGM (Ref # 43028) | 43028-1065 | 1 |
| RESERVOIR (Ref # 43078) | 43078-0060 | 1 |
| HOSE-BRAKE (Ref # 43095) | 43095-1496 | 1 |
| HOSE-BRAKE,RR M/CYL.-ABS UNIT (Ref # 43095A) | 43095-1721 | 1 |
| HOSE-BRAKE,ABS UNIT-RR CALIPER (Ref # 43095B) | 43095-1723 | 1 |
| COVER-SEAL,BRAKE PISTON (Ref # 49016) | 49016-1103 | 1 |
| WASHER-SEAL,10.1X14.5X1.5 (Ref # 49091) | 49091-0001 | 8 |
| RING-SNAP,20.9X24.6X1.2 (Ref # 92033) | 92033-0079 | 1 |
| RING-SNAP,20.5MM (Ref # 92033A) | 92033-1186 | 1 |
| PIN,8X17 (Ref # 92043) | 92043-0104 | 1 |
| RING-O,14.8X2.4 (Ref # 92055) | 92055-0741 | 1 |
| SPRING,MASTER CYLINDER (Ref # 92081) | 92081-1737 | 1 |
| COLLAR,5.3X7.3X5.3 (Ref # 92152) | 92152-2190 | 1 |
| BOLT,OIL,L=23 (Ref # 92153) | 92153-0627 | 2 |
| BOLT,SOCKET,8X30 (Ref # 92153A) | 92153-1624 | 2 |
| BOLT,SOCKET,5X16 (Ref # 92154) | 92154-0209 | 1 |
| BOLT,FLANGED,6X16 (Ref # 92154A) | 92154-0385 | 1 |
| BOLT,FLANGED,6X16 (Ref # 92154B) | 92154-0899 | 2 |
| BOLT,BANJO,10X22 (Ref # 92154C) | 92154-1138 | 2 |
| CLAMP,HOSE (Ref # 92170) | 92170-1091 | 2 |
| CLAMP (Ref # 92171) | 92171-0817 | 1 |

2023 Z900RS SE PARTS LIST

Rear Master Cylinder

| ITEM NAME | PART NUMBER | QUANTITY |
|---------------------------------------|-------------|----------|
| CLAMP,HOSE&SENSOR LINE (Ref # 92173) | 92173-1613 | 3 |
| CLAMP,HOSE&SENSOR LINE (Ref # 92173A) | 92173-2115 | 1 |
| PIN-COTTER,2.0X15 (Ref # 550) | 550AA2015 | 1 |