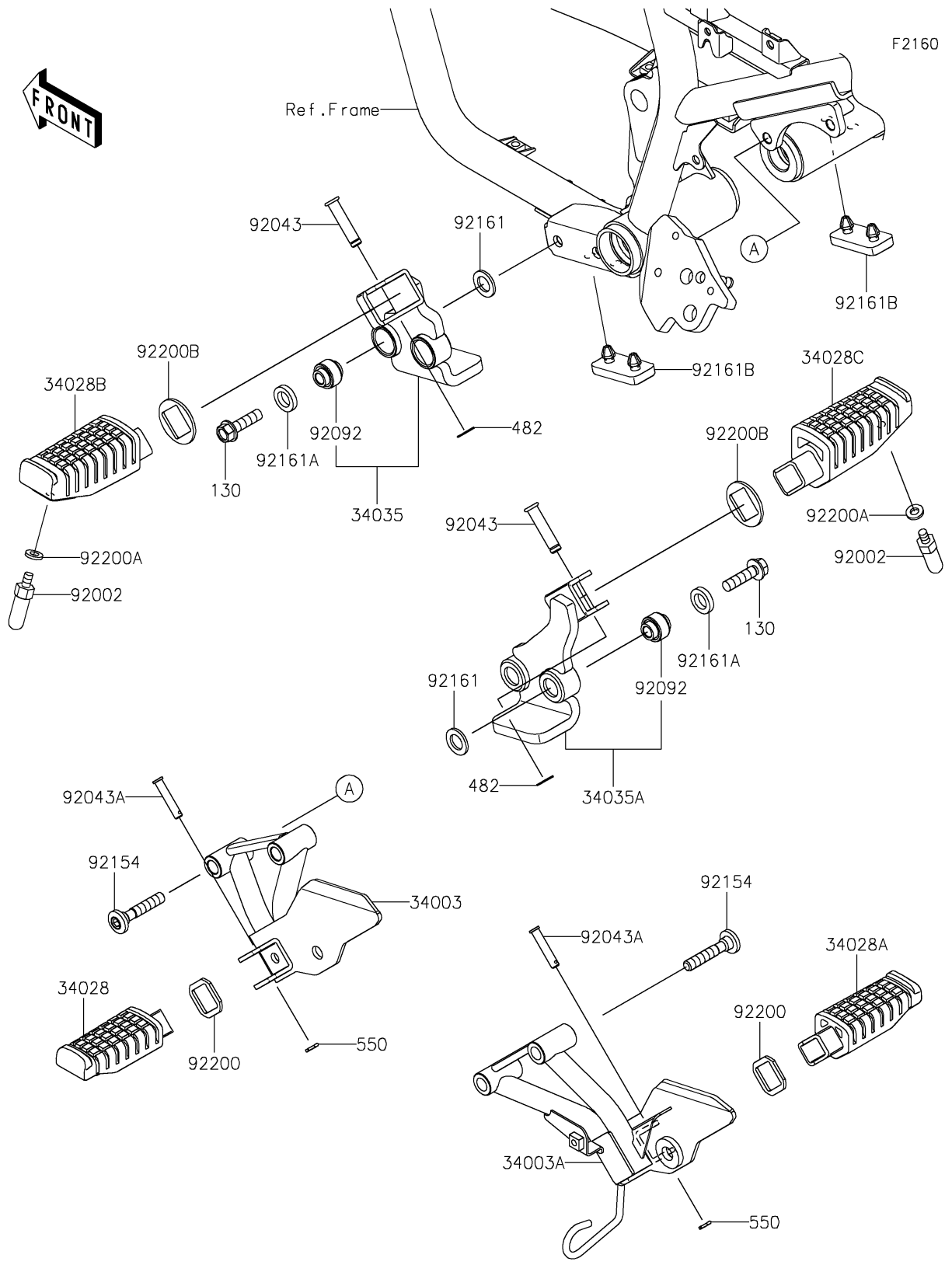


# 2023 KLR® 650 S PARTS DIAGRAM

## Footrests



## 2023 KLR® 650 S PARTS LIST

### Footrests

| ITEM NAME                                  | PART NUMBER    | QUANTITY |
|--|----------------|----------|
| HOLDER-STEP,RR,LH,F.S.BLACK (Ref # 34003)  | 34003-0185-18R | 1        |
| HOLDER-STEP,RR,RH,F.S.BLACK (Ref # 34003A) | 34003-0194-18R | 1        |
| STEP,RR,LH (Ref # 34028)                   | 34028-0134     | 1        |
| STEP,RR,RH (Ref # 34028A)                  | 34028-0135     | 1        |
| STEP,FR,LH (Ref # 34028B)                  | 34028-0402     | 1        |
| STEP,FR,RH (Ref # 34028C)                  | 34028-0403     | 1        |
| HOLDER-ASSY-STEP,FR,LH (Ref # 34035)       | 34035-0003     | 1        |
| HOLDER-ASSY-STEP,FR,RH (Ref # 34035A)      | 34035-0004     | 1        |
| BOLT,BANK SENSOR (Ref # 92002)             | 92002-1995     | 2        |
| PIN,8X36.5 (Ref # 92043)                   | 92043-1339     | 2        |
| PIN,6X28 (Ref # 92043A)                    | 92043-1464     | 2        |
| BUSHING-RUBBER,8.4X20X18 (Ref # 92092)     | 92092-0039     | 4        |
| BOLT,SOCKET,8X44 (Ref # 92154)             | 92154-4427     | 4        |
| DAMPER,12.5X21X2 (Ref # 92161)             | 92161-0943     | 4        |
| DAMPER,12.5X20X4 (Ref # 92161A)            | 92161-0944     | 4        |
| DAMPER (Ref # 92161B)                      | 92161-2391     | 2        |
| WASHER,RR STEP (Ref # 92200)               | 92200-0561     | 2        |
| WASHER,6.5X13X2.0 (Ref # 92200A)           | 92200-0562     | 2        |
| WASHER,FR STEP (Ref # 92200B)              | 92200-2537     | 2        |
| BOLT-FLANGED,8X30 (Ref # 130)              | 130CA0830      | 4        |
| CIRCLIP-TYPE-E (Ref # 482)                 | 482EA7000      | 2        |
| PIN-COTTER,2.0X15 (Ref # 550)              | 550AA2015      | 2        |