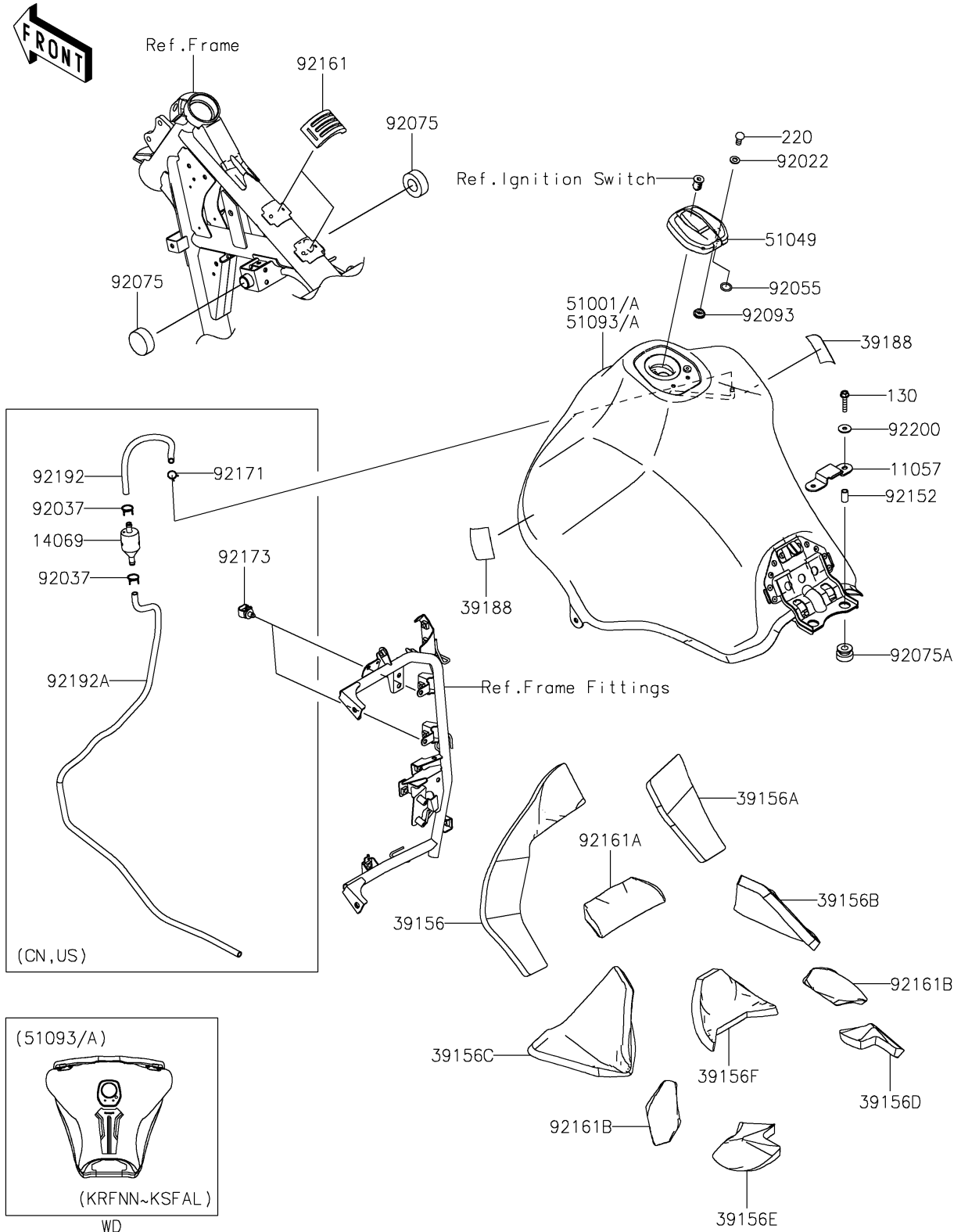


2025 KLR650 S ABS PARTS DIAGRAM

Fuel Tank

F2410



2025 KLR650 S ABS PARTS LIST

Fuel Tank

| ITEM NAME | PART NUMBER | QUANTITY |
|---|----------------|----------|
| BRACKET,SEAT (Ref # 11057) | 11057-4274 | 1 |
| PAD,FR,LH (Ref # 39156) | 39156-2664 | 1 |
| PAD,FR,RH (Ref # 39156A) | 39156-2665 | 1 |
| PAD,MID,RH (Ref # 39156B) | 39156-2701 | 1 |
| PAD,MID,LH (Ref # 39156C) | 39156-2702 | 1 |
| PAD,RR,RH (Ref # 39156D) | 39156-2703 | 1 |
| PAD,RR,LH (Ref # 39156E) | 39156-2704 | 1 |
| PAD,CNT (Ref # 39156F) | 39156-2705 | 1 |
| TAPE,40X50 (Ref # 39188) | 39188-0049 | 2 |
| CAP-TANK,FUEL (Ref # 51049) | 51049-0760 | 1 |
| TANK-COMP-FUEL,M.C.GRAY (Ref # 51093) | 51093-5173-51A | 1 |
| TANK-COMP-FUEL,M.M.D.GREEN (Ref # 51093A) | 51093-5173-63Y | 1 |
| WASHER,5.1X10X1.0 (Ref # 92022) | 92022-1977 | 2 |
| RING-O (Ref # 92055) | 92055-1023 | 2 |
| DAMPER,FUEL TANK (Ref # 92075) | 92075-101 | 2 |
| DAMPER (Ref # 92075A) | 92075-1660 | 2 |
| SEAL,FUEL TANK CAP (Ref # 92093) | 92093-1030 | 1 |
| COLLAR,6.8X10X18 (Ref # 92152) | 92152-2726 | 2 |
| DAMPER (Ref # 92161) | 92161-2372 | 2 |
| DAMPER,CNT (Ref # 92161A) | 92161-2394 | 1 |
| DAMPER,LH&RH (Ref # 92161B) | 92161-2395 | 2 |
| WASHER,6.5X20X1.6 (Ref # 92200) | 92200-1962 | 2 |
| BOLT-FLANGED,6X30 (Ref # 130) | 130BB0630 | 2 |
| SCREW-PAN-CROS,5X10 (Ref # 220) | 220AA0510 | 2 |