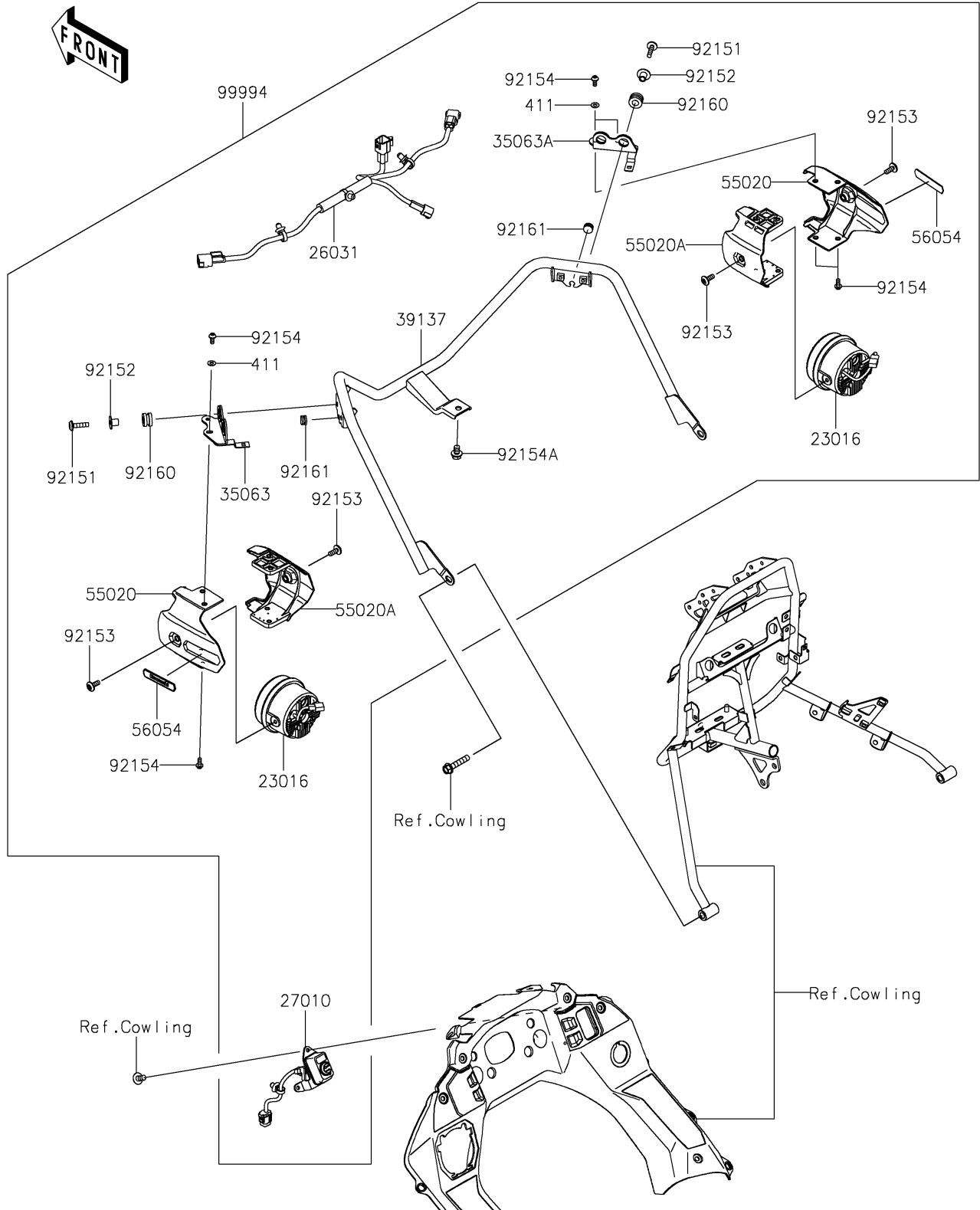


2025 KLR650 S ABS PARTS DIAGRAM

Accessory(Fog Lamp)

F2910B



2025 KLR650 S ABS PARTS LIST

Accessory(Fog Lamp)

| ITEM NAME | PART NUMBER | QUANTITY |
|--------------------------------------|-------------|----------|
| LAMP-ASSY,LED,FOG,PIAA (Ref # 23016) | 23016-0599 | 2 |
| HARNESS,FOG LAMP (Ref # 26031) | 26031-3860 | 1 |
| SWITCH,FOG LAMP (Ref # 27010) | 27010-0968 | 1 |
| STAY,LH (Ref # 35063) | 35063-1537 | 1 |
| STAY,RH (Ref # 35063A) | 35063-1538 | 1 |
| STAY-COMP,MAIN (Ref # 39137) | 39137-0713 | 1 |
| GUARD,OUTER (Ref # 55020) | 55020-1825 | 2 |
| GUARD,INNER (Ref # 55020A) | 55020-1826 | 2 |
| MARK,FOG LAMP,KAWASAKI (Ref # 56054) | 56054-1695 | 2 |
| BOLT,SOCKET,6X25 (Ref # 92151) | 92151-1611 | 4 |
| COLLAR,6.5X20X12 (Ref # 92152) | 92152-2262 | 4 |
| BOLT,SOCKET,6X16 (Ref # 92153) | 92153-1526 | 4 |
| BOLT,SOCKET,5X12 (Ref # 92154) | 92154-0917 | 8 |
| BOLT,FLANGED,8X12 (Ref # 92154A) | 92154-4252 | 1 |
| DAMPER,10X20X12 (Ref # 92160) | 92160-1167 | 4 |
| DAMPER,8X14X8.9 (Ref # 92161) | 92161-1666 | 2 |
| FOG LAMP (Ref # 99994) | 99994-1498 | 1 |
| WASHER-PLAIN,5MM (Ref # 411) | 411AB0500 | 4 |