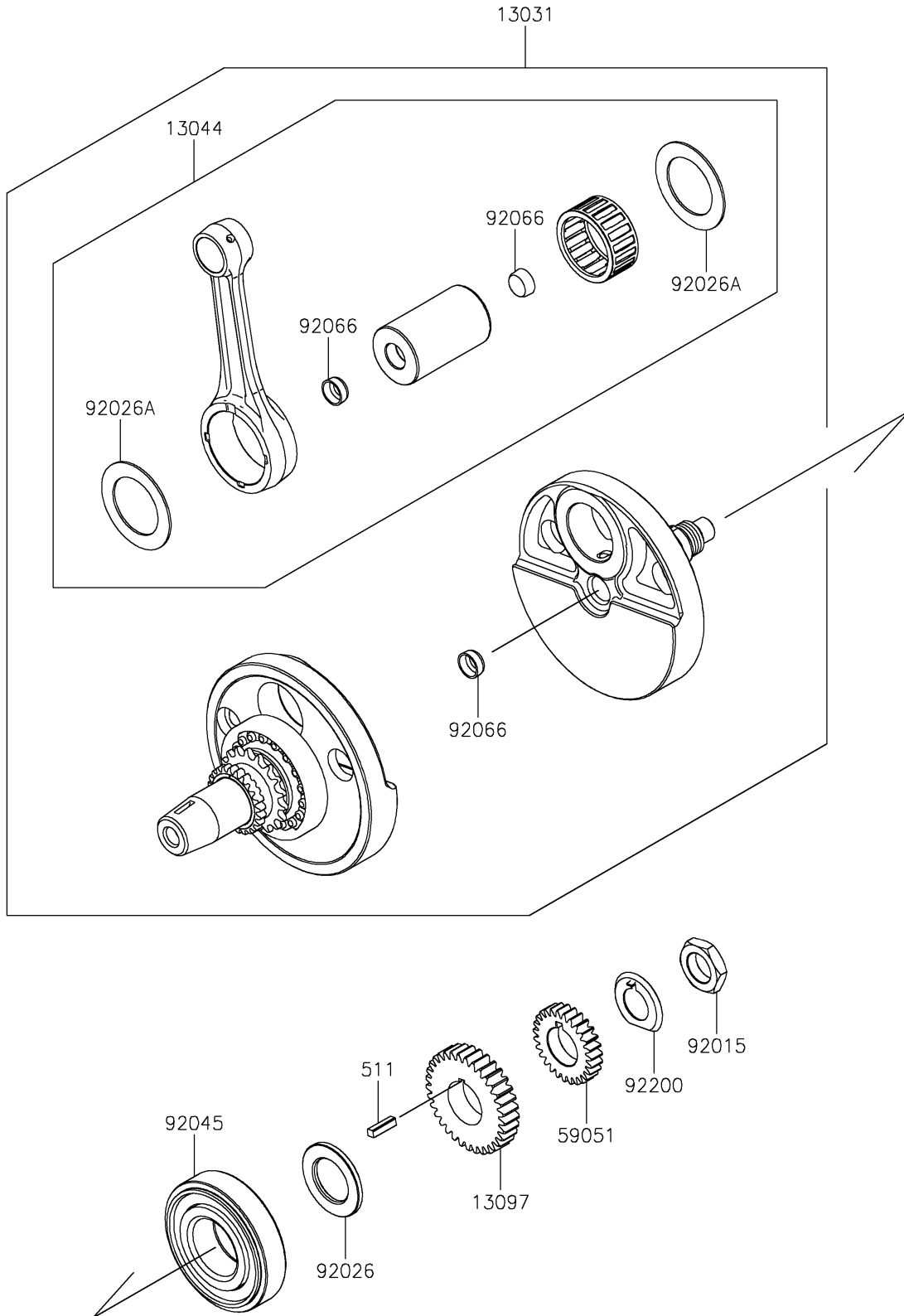


# 2023 KLR® 650 PARTS DIAGRAM

Crankshaft

E1321



## 2023 KLR® 650 PARTS LIST

### Crankshaft

| ITEM NAME                           | PART NUMBER | QUANTITY |
|-------------------------------------|-------------|----------|
| CRANKSHAFT-COMP (Ref # 13031)       | 13031-0977  | 1        |
| SET-CONNECTING ROD (Ref # 13044)    | 13044-5089  | 1        |
| GEAR-PRIMARY SPUR,33T (Ref # 13097) | 13097-1333  | 1        |
| GEAR-SPUR,27T (Ref # 59051)         | 59051-1145  | 1        |
| NUT,22MM (Ref # 92015)              | 92015-1890  | 1        |
| SPACER (Ref # 92026)                | 92026-0150  | 1        |
| SPACER,40X60X1.5 (Ref # 92026A)     | 92026-0152  | 2        |
| BEARING-BALL,40X90X23 (Ref # 92045) | 92045-0065  | 1        |
| PLUG (Ref # 92066)                  | 92066-1154  | 3        |
| WASHER (Ref # 92200)                | 92200-0557  | 1        |
| KEY-SUNK (Ref # 511)                | 511A0520    | 1        |