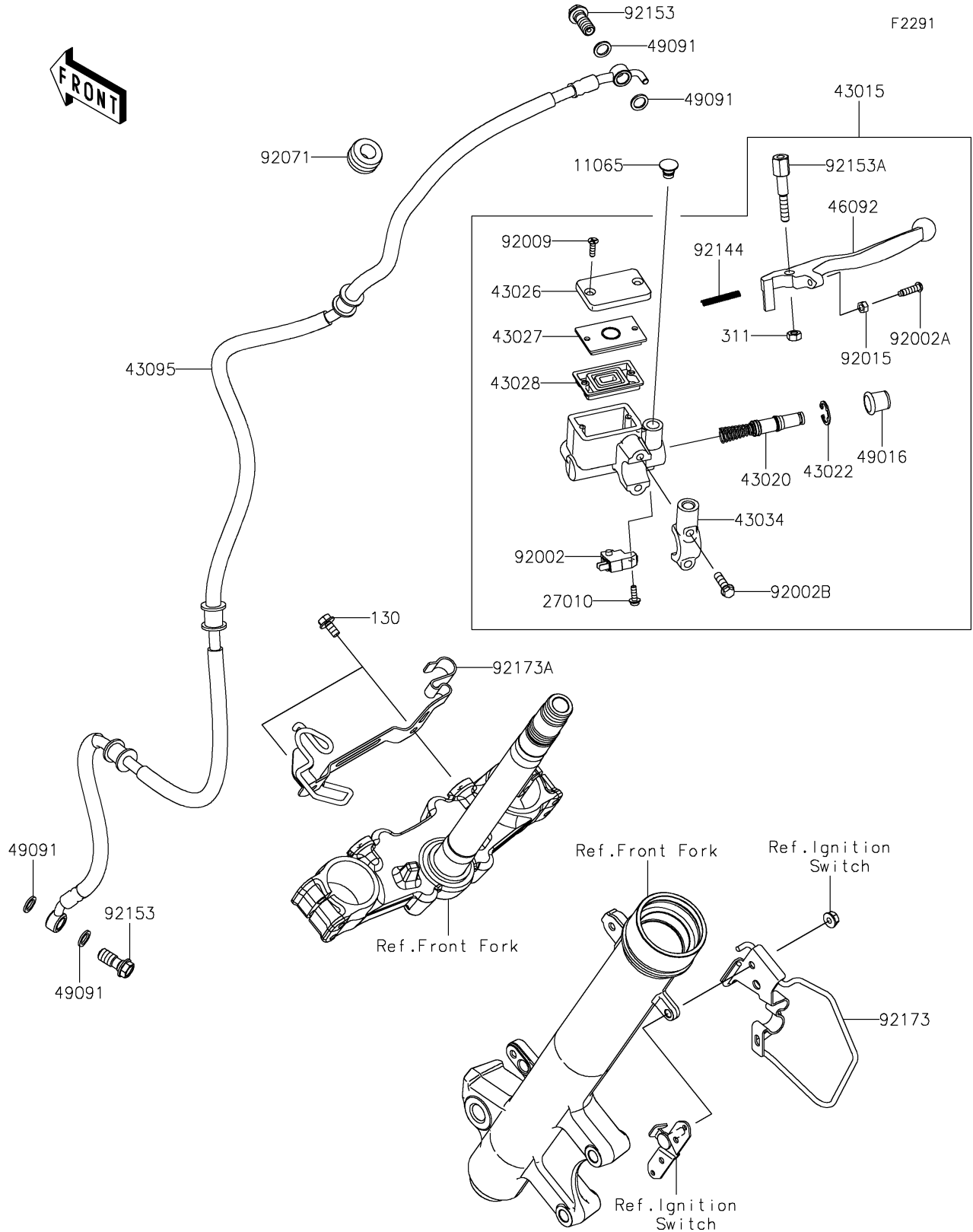


# 2023 KLR® 650 PARTS DIAGRAM

## Front Master Cylinder



## 2023 KLR® 650 PARTS LIST

### Front Master Cylinder

| ITEM NAME                                  | PART NUMBER | QUANTITY |
|--|-------------|----------|
| CAP,DUMMY (Ref # 11065)                    | 11065-0921  | 1        |
| SWITCH,BRAKE (Ref # 27010)                 | 27010-0762  | 1        |
| CYLINDER-ASSY-MASTER,FR (Ref # 43015)      | 43015-0788  | 1        |
| PISTON-COMP-BRAKE (Ref # 43020)            | 43020-1104  | 1        |
| STOPPER-BRAKE,PISTON (Ref # 43022)         | 43022-1010  | 1        |
| CAP-BRAKE (Ref # 43026)                    | 43026-1082  | 1        |
| PLATE-DIAPHRAGM (Ref # 43027)              | 43027-1057  | 1        |
| DIAPHRAGM (Ref # 43028)                    | 43028-1061  | 1        |
| HOLDER-BRAKE (Ref # 43034)                 | 43034-0145  | 1        |
| HOSE-BRAKE,FR M/C-FR CALIPER (Ref # 43095) | 43095-1882  | 1        |
| LEVER-GRIP,FRONT BRAKE (Ref # 46092)       | 46092-1175  | 1        |
| COVER-SEAL,MASTER CYLINDER (Ref # 49016)   | 49016-1044  | 1        |
| WASHER-SEAL,10.1X14.5X1.5 (Ref # 49091)    | 49091-0001  | 4        |
| BOLT,SCREW,4X12 (Ref # 92002)              | 92002-1323  | 1        |
| BOLT,ADJUST (Ref # 92002A)                 | 92002-1893  | 1        |
| BOLT (Ref # 92002B)                        | 92002-1894  | 2        |
| SCREW,4MM (Ref # 92009)                    | 92009-1458  | 2        |
| NUT,ADJUST (Ref # 92015)                   | 92015-1642  | 1        |
| GROMMET,12.2X26X16 (Ref # 92071)           | 92071-0785  | 1        |
| SPRING,RETURN (Ref # 92144)                | 92144-1103  | 1        |
| BOLT,OIL,L=23 (Ref # 92153)                | 92153-0627  | 2        |
| BOLT,LEVER SET (Ref # 92153A)              | 92153-0790  | 1        |
| CLAMP (Ref # 92173)                        | 92173-2348  | 1        |
| CLAMP (Ref # 92173A)                       | 92173-2350  | 1        |
| BOLT-FLANGED,6X12 (Ref # 130)              | 130BA0612   | 2        |
| NUT-HEX,6MM (Ref # 311)                    | 311BB0600   | 1        |