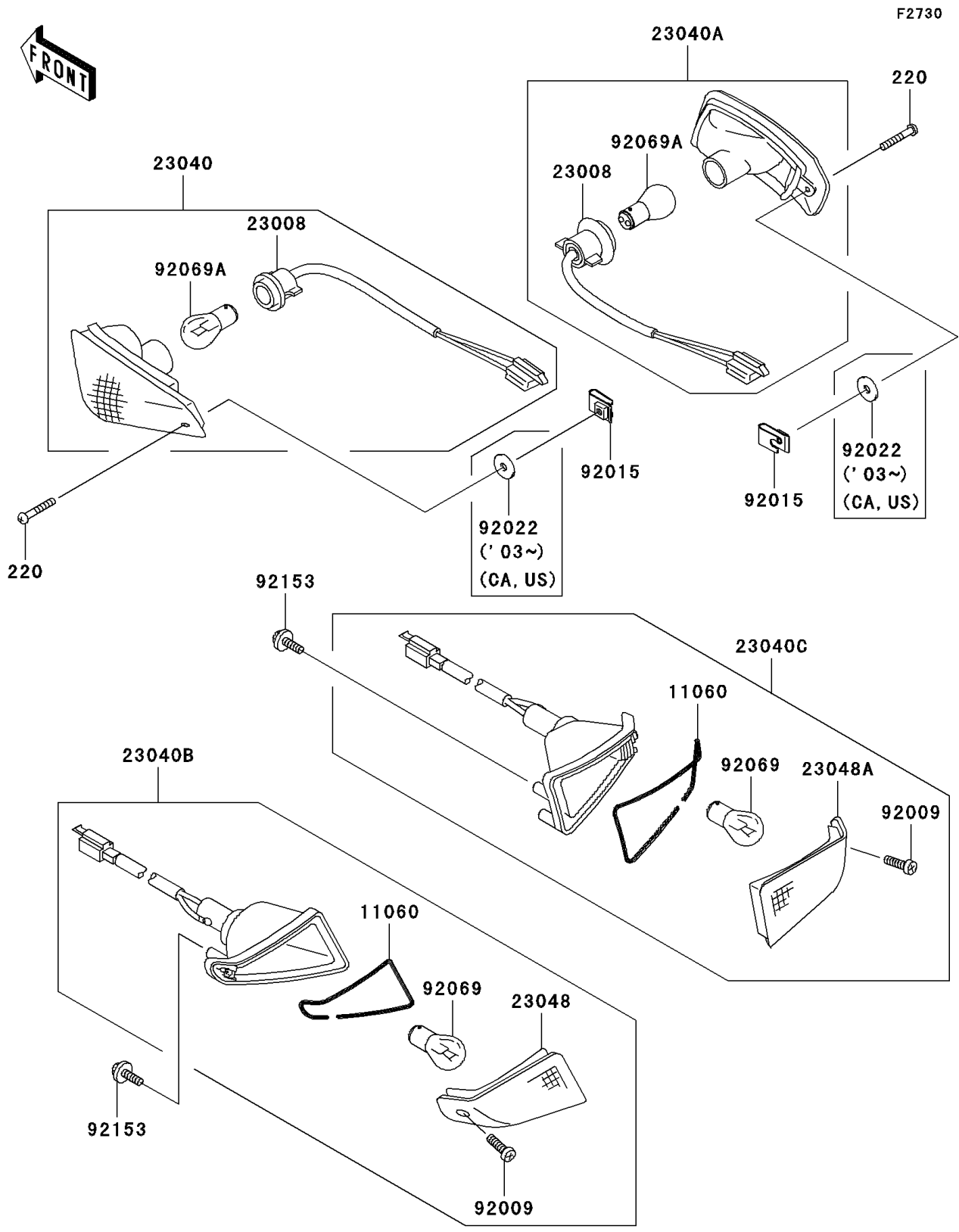


# 2003 ZZR600 PARTS DIAGRAM

## Turn Signals



## 2003 ZZR600 PARTS LIST

### Turn Signals

ITEM NAME	PART NUMBER	QUANTITY
SCREW-PAN-CROS,4X25 (Ref # 220)	220D0425	2
GASKET,SIGNAL LAMP LENS (Ref # 11060)	11060-1322	2
SOCKET-ASSY,SIGNAL LAMP,FR (Ref # 23008)	23008-1514	2
LAMP-SIGNAL,FR,LH (Ref # 23040)	23040-1237	1
LAMP-SIGNAL,FR,RH (Ref # 23040A)	23040-1238	1
LAMP-SIGNAL,RR,LH (Ref # 23040B)	23040-1243	1
LAMP-SIGNAL,RR,RH (Ref # 23040C)	23040-1244	1
LENS-SIGNAL LAMP,RR,LH (Ref # 23048)	23048-1144	1
LENS-SIGNAL LAMP,RR,RH (Ref # 23048A)	23048-1145	1
SCREW,TAPPING,4X14,YELLOW (Ref # 92009)	92009-1140	2
NUT,4MM (Ref # 92015)	92015-1834	2
BULB,12V 32CP(23W) (Ref # 92069)	92069-055	2
BULB,12V 32/3CP(23/8W) (Ref # 92069A)	92069-060	2
BOLT,TAPPING,5X16 (Ref # 92153)	92153-0011	6
WASHER,5X16X1.5 (Ref # 92022)	92022-3041	2