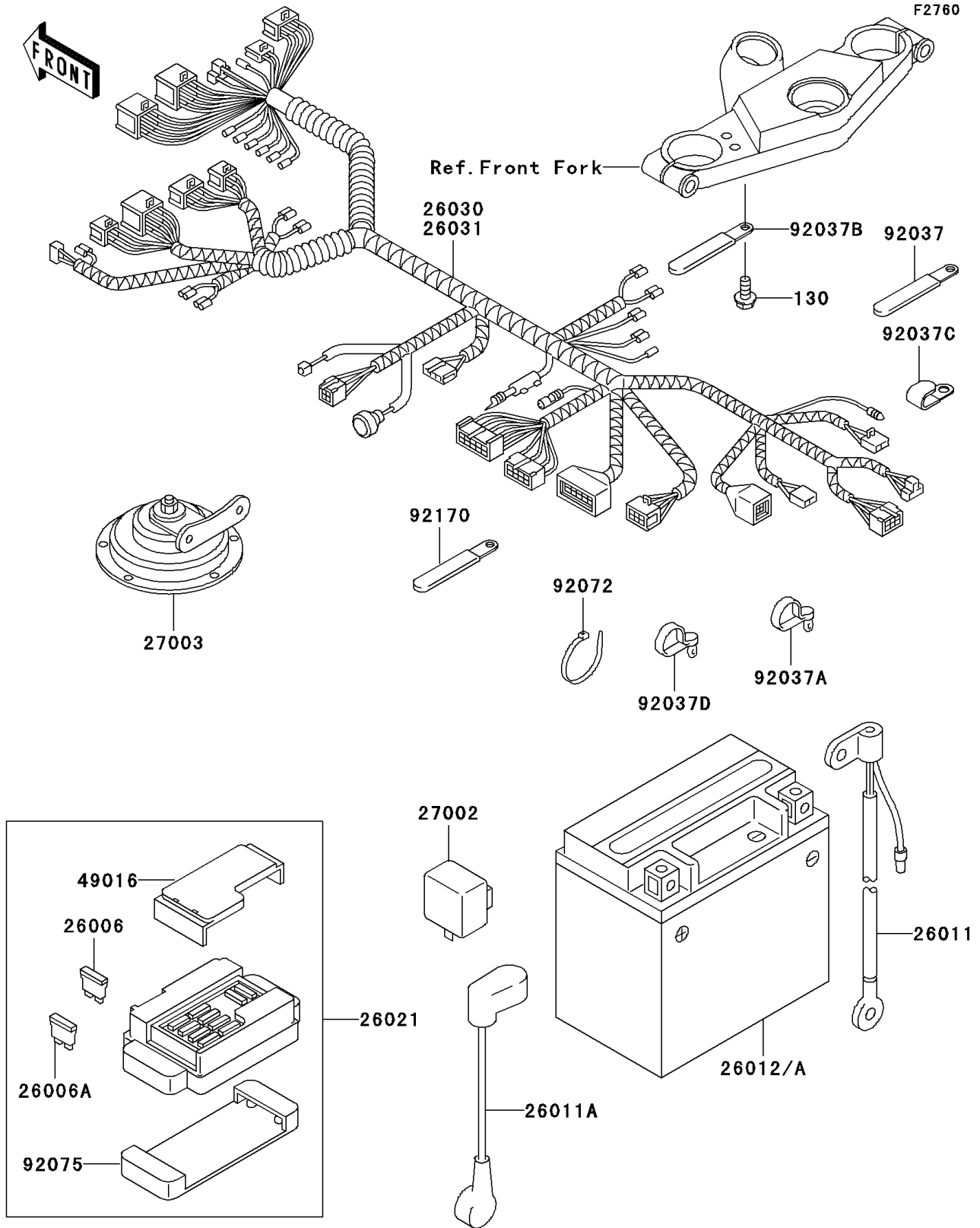


# 2004 ZZR600 PARTS DIAGRAM

## Chassis Electrical Equipment



## 2004 ZZR600 PARTS LIST

### Chassis Electrical Equipment

| ITEM NAME                                | PART NUMBER | QUANTITY |
|--|-------------|----------|
| BOLT-FLANGED,6X14,BLACK (Ref # 130)      | 130J0614    | 1        |
| FUSE,30A-G (Ref # 26006)                 | 26006-1067  | 1        |
| FUSE,10A-R (Ref # 26006A)                | 26006-1068  | 8        |
| WIRE-LEAD,BATTERY(-) (Ref # 26011)       | 26011-1429  | 1        |
| WIRE-LEAD,BATTERY(+) (Ref # 26011A)      | 26011-1540  | 1        |
| JUNCTION BOX (Ref # 26021)               | 26021-1089  | 1        |
| RELAY-ASSY,TURN SIGNAL (Ref # 27002)     | 27002-1101  | 1        |
| HORN (Ref # 27003)                       | 27003-1316  | 1        |
| COVER-SEAL,FUSE (Ref # 49016)            | 49016-1177  | 1        |
| CLAMP,L=60 (Ref # 92037)                 | 92037-1069  | 3        |
| CLAMP,SPEED,L=58 (Ref # 92037A)          | 92037-1163  | 1        |
| CLAMP,L=45 (Ref # 92037B)                | 92037-1539  | 1        |
| CLAMP (Ref # 92037C)                     | 92037-1877  | 3        |
| CLAMP,SPEED,L=80.5 (Ref # 92037D)        | 92037-1903  | 1        |
| BAND,L=202 (Ref # 92072)                 | 92072-1195  | 8        |
| DAMPER,JUNCTION BOX (Ref # 92075)        | 92075-1688  | 1        |
| CLAMP,L=150 (Ref # 92170)                | 92170-1114  | 1        |
| BATTERY,YTX12-BS,12V 10AH (Ref # 26012)  | 26012-0049  | 1        |
| BATTERY,YTX12-BS,12V 10AH (Ref # 26012A) | 26012-1330  | 1        |
| HARNESS,MAIN (Ref # 26030)               | 26030-1476  | 1        |
| HARNESS,MAIN (Ref # 26031)               | 26031-0196  | 1        |