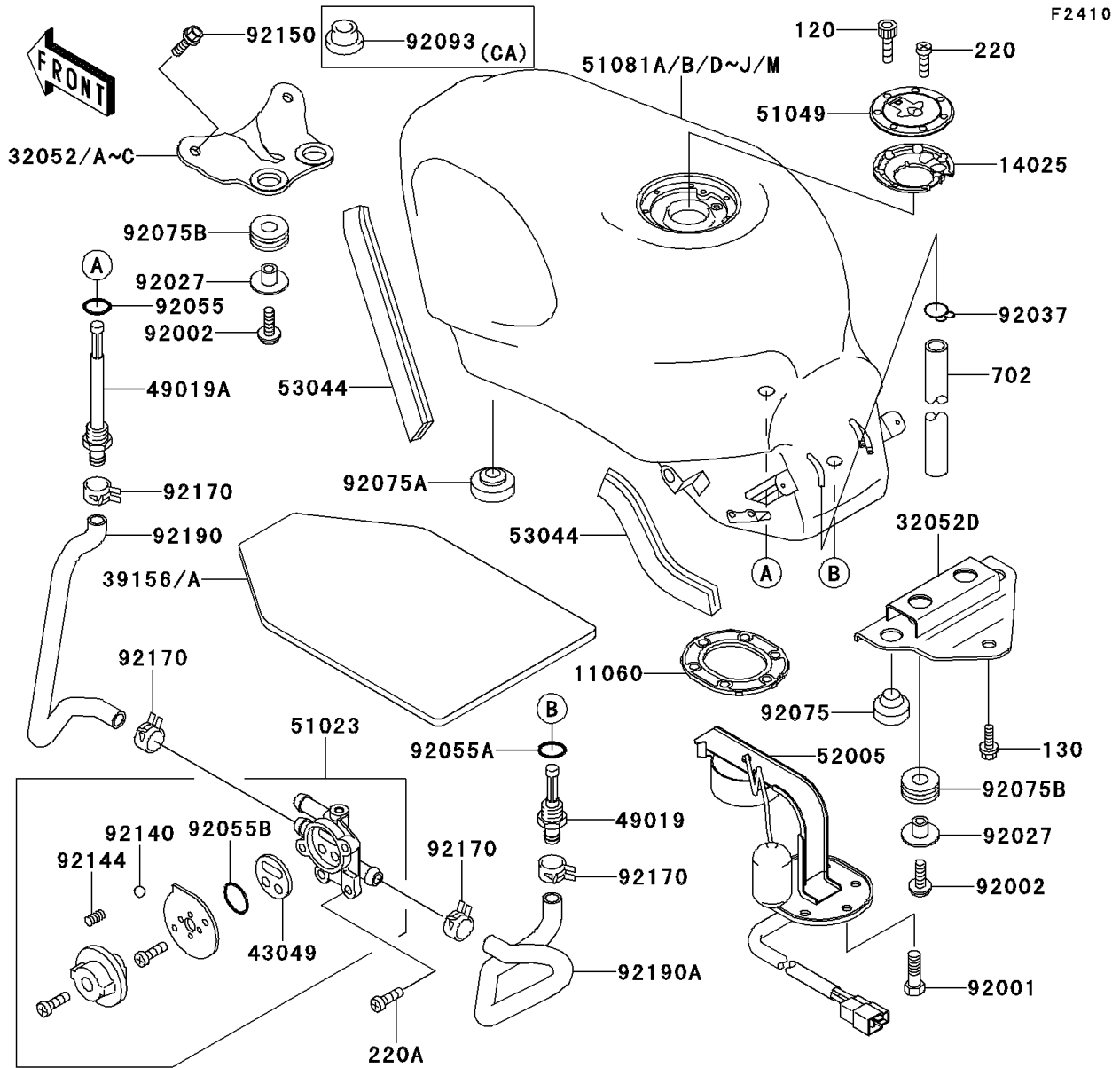
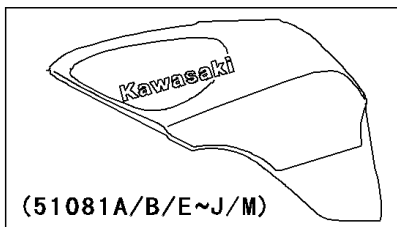


2001 Ninja® ZX™-6 PARTS DIAGRAM

Fuel Tank(4/4)

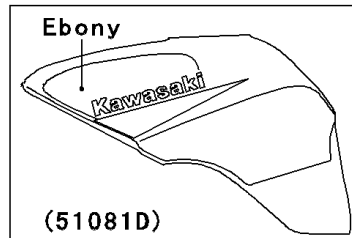


(51081A/B/E~H)	C. P. Red
(51081I/J/M)	P. P. Black



(51081A/B/E~J/M)

WD



(51081D)

WD

2001 Ninja® ZX™-6 PARTS LIST

Fuel Tank(4/4)

ITEM NAME	PART NUMBER	QUANTITY
GASKET,FUEL GAUGE (Ref # 11060)	11060-1337	1
COVER,TANK CAP (Ref # 14025)	14025-1913	1
BRACKET-TANK,RR (Ref # 32052D)	32052-1363	1
PAD,FUEL TANK (Ref # 39156A)	39156-1662	1
PACKING,TAP VALVE (Ref # 43049)	43049-1066	1
FILTER-FUEL (Ref # 49019)	49019-1070	1
FILTER-FUEL,"ON" (Ref # 49019A)	49019-1071	1
TAP-ASSY,FUEL (Ref # 51023)	51023-1192	1
CAP-TANK,FUEL (Ref # 51049)	51049-1091	1
GAUGE,FUEL (Ref # 52005)	52005-1105	1
TRIM (Ref # 53044)	53044-1137	3
BOLT,FUEL GAUGE (Ref # 92001)	92001-1069	6
BOLT,6X20 (Ref # 92002)	92002-1237	4
COLLAR,L=13.1 (Ref # 92027)	92027-251	4
CLAMP,TUBE (Ref # 92037)	92037-010	1
RING-O,ID=9.5 (Ref # 92055)	92055-1386	1
BOLT-SOCKET (Ref # 120)	120S0512	7
BOLT-FLANGED,8X20 (Ref # 130)	130J0820	1
SCREW-PAN-CROS (Ref # 220)	220C0508	1
SCREW-PAN-CROS,6X8 (Ref # 220A)	220C0608	2
TUBE-RUBBER,7X10X600 (Ref # 702)	702A07600	1
RING-O,11.5X1.5 (Ref # 92055A)	92055-1387	1
RING-O,TAP LEVER (Ref # 92055B)	92055-1419	1
DAMPER (Ref # 92075)	92075-015	2
DAMPER,SIDE STAND (Ref # 92075A)	92075-157	2
DAMPER (Ref # 92075B)	92075-1690	4
BALL,STAINLESS,5/32" (Ref # 92140)	92140-1051	1
SPRING,FUEL TAP KNOB (Ref # 92144)	92144-1212	1
BOLT,6X14 (Ref # 92150)	92150-1340	2

2001 Ninja® ZX™-6 PARTS LIST

Fuel Tank(4/4)

ITEM NAME	PART NUMBER	QUANTITY
CLAMP (Ref # 92170)	92170-1492	4
TUBE,TAP-FILTER (Ref # 92190)	92190-1332	1
TUBE,FUEL,RES (Ref # 92190A)	92190-1333	1
BRACKET-TANK,FR,P.C.GRAY (Ref # 32052)	32052-1362-CQ	1
BRACKET-TANK,FR,C.GRAY (Ref # 32052A)	32052-1362-EZ	1
TANK-COMP-FUEL,BLACK (Ref # 51081I)	51081-5415-5M	1
TANK-COMP-FUEL,BLACK (Ref # 51081J)	51081-5416-5M	1
TANK-COMP-FUEL,BLACK MICA (Ref # 51081M)	51081-5470-20	1
SEAL,FUEL TANK CAP (Ref # 92093)	92093-1030	1