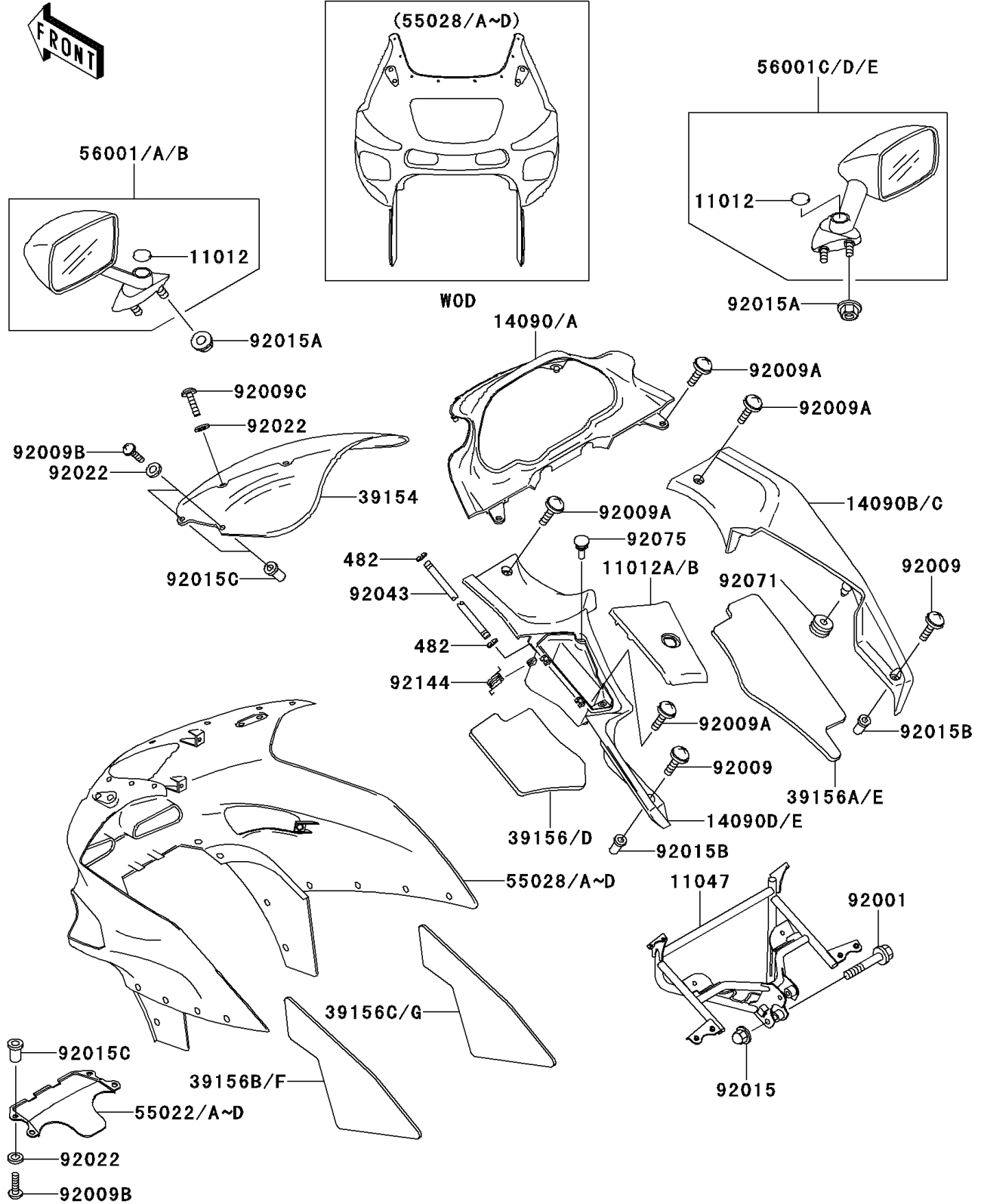


1999 Ninja® ZX™-6 PARTS DIAGRAM

Cowling

F2871



1999 Ninja® ZX™-6 PARTS LIST

Cowling

ITEM NAME	PART NUMBER	QUANTITY
CAP,MIRROR,BLACK (Ref # 11012)	11012-1751-6Z	2
BRACKET,UPP COWLING (Ref # 11047)	11047-1935	1
WINDSHIELD (Ref # 39154)	39154-1121	1
PAD,INNER COWLING,LH (Ref # 39156)	39156-1364	1
PAD,INNER COWLING,RH (Ref # 39156A)	39156-1365	1
PAD,UPP COWLING,LH (Ref # 39156B)	39156-1366	1
PAD,UPP COWLING,RH (Ref # 39156C)	39156-1367	1
COVER-HEAD LAMP,C.P.RED (Ref # 55022)	55022-1084-A5	1
COWLING,UPP,C.P.RED (Ref # 55028)	55028-1369-A5	1
MIRROR-ASSY,LH,C.P.RED (Ref # 56001)	56001-1394-A5	1
MIRROR-ASSY,RH,C.P.RED (Ref # 56001C)	56001-1395-A5	1
BOLT,FLANGED,8X45 (Ref # 92001)	92001-1613	2
SCREW,6X22,BLACK (Ref # 92009)	92009-1256	2
SCREW,6X16 (Ref # 92009A)	92009-1621	5
SCREW,5X16,BLACK (Ref # 92009B)	92009-1654	8
SCREW,5X20,BLACK (Ref # 92009C)	92009-1656	4
NUT,CAP,8MM,BLACK (Ref # 92015)	92015-1174	2
NUT,FLANGED,6MM,BLACK (Ref # 92015A)	92015-1233	4
NUT (Ref # 92015B)	92015-1700	2
NUT,WELL,5MM (Ref # 92015C)	92015-1757	8
WASHER,NYLON,5.3X11.5X1.5 (Ref # 92022)	92022-1521	12
PIN,4X124.7 (Ref # 92043)	92043-1477	1
CIRCLIP-TYPE-E,3MM (Ref # 482)	482L3000	2
GROMMET (Ref # 92071)	92071-056	1
DAMPER (Ref # 92075)	92075-1808	2
SPRING (Ref # 92144)	92144-1697	1
CAP,INNER COWLING COVER,LH,GRA (Ref # 11012A)	11012-1862-11	1
CAP,INNER COWLING COVER,LH,GRA (Ref # 11012B)	11012-1862-12	1
COVER,INNER COWLING,CNT,GRAY (Ref # 14090)	14090-1289-11	1

1999 Ninja® ZX™-6 PARTS LIST

Cowling

ITEM NAME	PART NUMBER	QUANTITY
COVER,INNER COWLING,CNT,GRAY (Ref # 14090A)	14090-1289-12	1
COVER,INNER COWLING,RH,GRAY (Ref # 14090B)	14090-1291-11	1
COVER,INNER COWLING,RH,GRAY (Ref # 14090C)	14090-1291-12	1
COVER,INNER COWLING,LH,GRAY (Ref # 14090D)	14090-1358-11	1
COVER,INNER COWLING,LH,GRAY (Ref # 14090E)	14090-1358-12	1
COVER-HEAD LAMP,M.GRAYSTONE (Ref # 55022A)	55022-1084-C4	1
COWLING,UPP,M.GRAYSTONE (Ref # 55028A)	55028-1369-C4	1
MIRROR-ASSY,LH,M.GRAYSTONE (Ref # 56001A)	56001-1394-C4	1
MIRROR-ASSY,RH,M.GRAYSTONE (Ref # 56001D)	56001-1395-C4	1