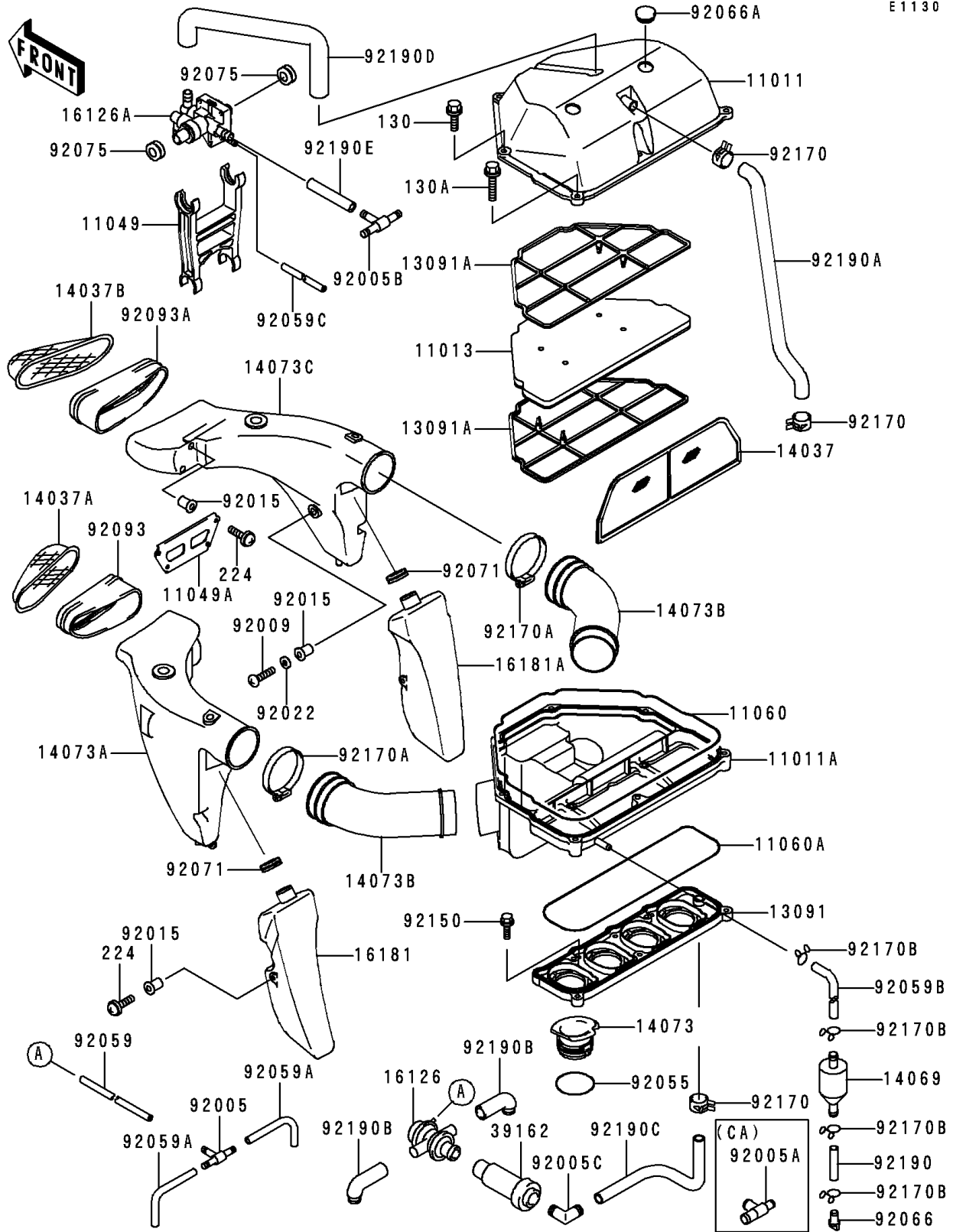


# 1996 Ninja® ZX™-6R PARTS DIAGRAM

Air Cleaner

E1130



# 1996 Ninja® ZX™-6R PARTS LIST

## Air Cleaner

ITEM NAME	PART NUMBER	QUANTITY
CASE-AIR FILTER,UPP (Ref # 11011)	11011-1448	1
CASE-AIR FILTER,LWR (Ref # 11011A)	11011-1449	1
ELEMENT-AIR FILTER (Ref # 11013)	11013-1240	1
BRACKET (Ref # 11049)	11049-1249	1
BRACKET (Ref # 11049A)	11049-1276	1
GASKET,AIR FILTER CASE (Ref # 11060)	11060-1669	1
GASKET,DUCT HOLDER (Ref # 11060A)	11060-1670	1
HOLDER,DUCT (Ref # 13091)	13091-1893	1
HOLDER,ELEMENT (Ref # 13091A)	13091-1894	2
SCREEN,AIR FILTER (Ref # 14037)	14037-1193	1
SCREEN,AIR DUCT,LH (Ref # 14037A)	14037-1194	1
SCREEN,AIR DUCT,RH (Ref # 14037B)	14037-1195	1
BREATHER (Ref # 14069)	14069-1051	1
DUCT,HOLDER (Ref # 14073)	14073-1614	4
DUCT,AIR INTAKE,LH (Ref # 14073A)	14073-1615	1
DUCT,AIR INTAKE (Ref # 14073B)	14073-1616	2
DUCT,AIR INTAKE,RH (Ref # 14073C)	14073-1617	1
VALVE,AIR SWITCH (Ref # 16126)	16126-1277	1
VALVE (Ref # 16126A)	16126-1288	1
TANK-RESONATOR,LH (Ref # 16181)	16181-1077	1
TANK-RESONATOR,RH (Ref # 16181A)	16181-1078	1
SILENCER-INTAKE (Ref # 39162)	39162-1084	1
FITTING,TUBE,T-TYPE (Ref # 92005)	92005-1017	1
FITTING (Ref # 92005B)	92005-1304	1
SCREW,5X20 (Ref # 92009)	92009-1656	2
NUT,WELL,5MM (Ref # 92015)	92015-1757	8
WASHER,NYLON,5.3X11.5X1.5 (Ref # 92022)	92022-1521	2
RING-O,67.7X3.1 (Ref # 92055)	92055-1434	4
TUBE,4X9X190 (Ref # 92059)	92059-1032	1

# 1996 Ninja® ZX™-6R PARTS LIST

## Air Cleaner

ITEM NAME	PART NUMBER	QUANTITY
TUBE,4X9X100 (Ref # 92059A)	92059-1058	2
TUBE,BREATHER (Ref # 92059B)	92059-1552	1
TUBE,4X9X260 (Ref # 92059C)	92059-1712	1
PLUG,DRAIN (Ref # 92066)	92066-1211	2
PLUG (Ref # 92066A)	92066-1389	2
GROMMET,AIR FILTER (Ref # 92071)	92071-1013	2
DAMPER,MUFFLER (Ref # 92075)	92075-1621	2
BOLT-FLANGED,6X30 (Ref # 130)	130H0630	6
BOLT-FLANGED (Ref # 130A)	130H0645	3
SCREW-PAN-WP-CROS (Ref # 224)	224C0520	6
SEAL,AIR INTAKE,LH (Ref # 92093)	92093-1375	1
SEAL,AIR INTAKE,RH (Ref # 92093A)	92093-1376	1
BOLT,5X12 (Ref # 92150)	92150-1661	8
CLAMP (Ref # 92170)	92170-1060	3
CLAMP (Ref # 92170A)	92170-1307	2
CLAMP (Ref # 92170B)	92170-1529	4
TUBE,7X12X45 (Ref # 92190)	92190-1200	1
TUBE,CRANK CASE-FILTER (Ref # 92190A)	92190-1575	1
TUBE,AIR FILTER-VALVE (Ref # 92190B)	92190-1581	2
TUBE (Ref # 92190C)	92190-1604	1
TUBE (Ref # 92190D)	92190-1615	1
TUBE (Ref # 92190E)	92190-1616	1
FITTING,T-TYPE (Ref # 92005A)	92005-1252	1
FITTING (Ref # 92005C)	92005-1309	1