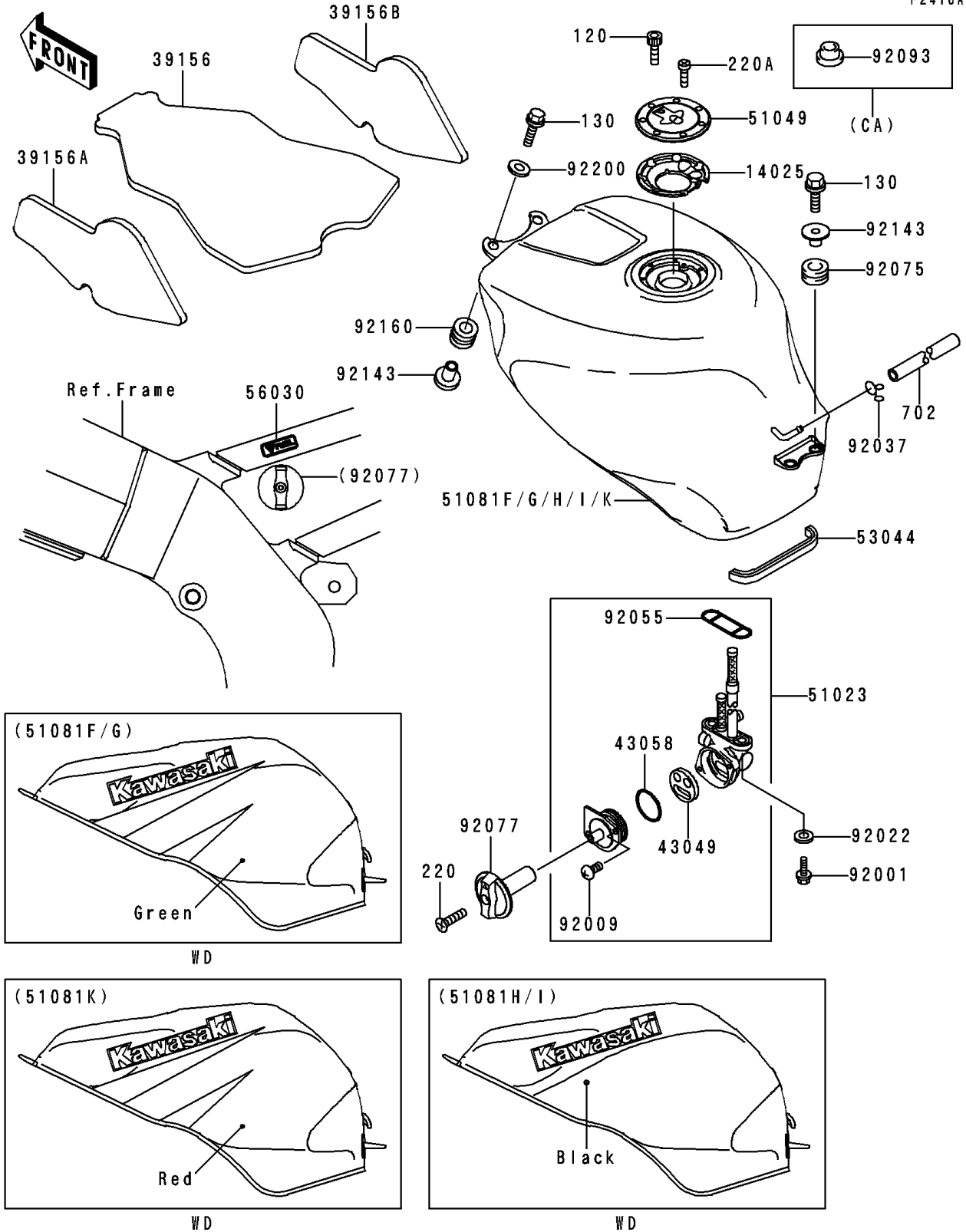


1999 Ninja® ZX™-6R PARTS DIAGRAM

Fuel Tank(ZX600-G2)

F2410A



1999 Ninja® ZX™-6R PARTS LIST

Fuel Tank(ZX600-G2)

ITEM NAME	PART NUMBER	QUANTITY
COVER,TANK CAP (Ref # 14025)	14025-1913	1
PAD,FUEL TANK,CNT (Ref # 39156)	39156-1612	1
PAD,FUEL TANK,LH (Ref # 39156A)	39156-1613	1
PAD,FUEL TANK,RH (Ref # 39156B)	39156-1614	1
PACKING,TAP VALVE (Ref # 43049)	43049-1075	1
RING,TAP LEVER (Ref # 43058)	43058-1083	1
TAP-ASSY,FUEL (Ref # 51023)	51023-1237	1
CAP-TANK,FUEL (Ref # 51049)	51049-1091	1
TRIM (Ref # 53044)	53044-1296	1
LABEL,FUEL TAP (Ref # 56030)	56030-1195	1
BOLT,6X25 (Ref # 92001)	92001-1524	2
SCREW,3X8 (Ref # 92009)	92009-1386	2
WASHER,6.2X11X1.5 (Ref # 92022)	92022-183	2
CLAMP,TUBE (Ref # 92037)	92037-010	1
RING-O,FUEL TAP PACKING (Ref # 92055)	92055-1112	1
DAMPER (Ref # 92075)	92075-209	2
KNOB,FUEL TAP (Ref # 92077)	92077-1123	1
BOLT-SOCKET (Ref # 120)	120S0512	7
BOLT-FLANGED,6X30,BLACK (Ref # 130)	130J0630	4
SCREW-PAN-CROS (Ref # 220)	220C0416	1
SCREW-PAN-CROS (Ref # 220A)	220C0508	1
TUBE-RUBBER,6X520 (Ref # 702)	702A06520	1
COLLAR (Ref # 92143)	92143-1515	4
DAMPER (Ref # 92160)	92160-1162	2
WASHER,6.5X22X1.6 (Ref # 92200)	92200-1087	2
TANK-COMP-FUEL,L.GREEN (Ref # 51081F)	51081-5113-7F	1
TANK-COMP-FUEL,L.GREEN (Ref # 51081G)	51081-5114-7F	1
TANK-COMP-FUEL,P.P.BLACK MICA (Ref # 51081H)	51081-5116-20	1
TANK-COMP-FUEL,P.P.BLACK MICA (Ref # 51081I)	51081-5117-20	1

1999 Ninja® ZX™-6R PARTS LIST

Fuel Tank(ZX600-G2)

ITEM NAME	PART NUMBER	QUANTITY
TANK-COMP-FUEL,F.RED (Ref # 51081K)	51081-5120-B1	1
SEAL,FUEL TANK CAP (Ref # 92093)	92093-1030	1