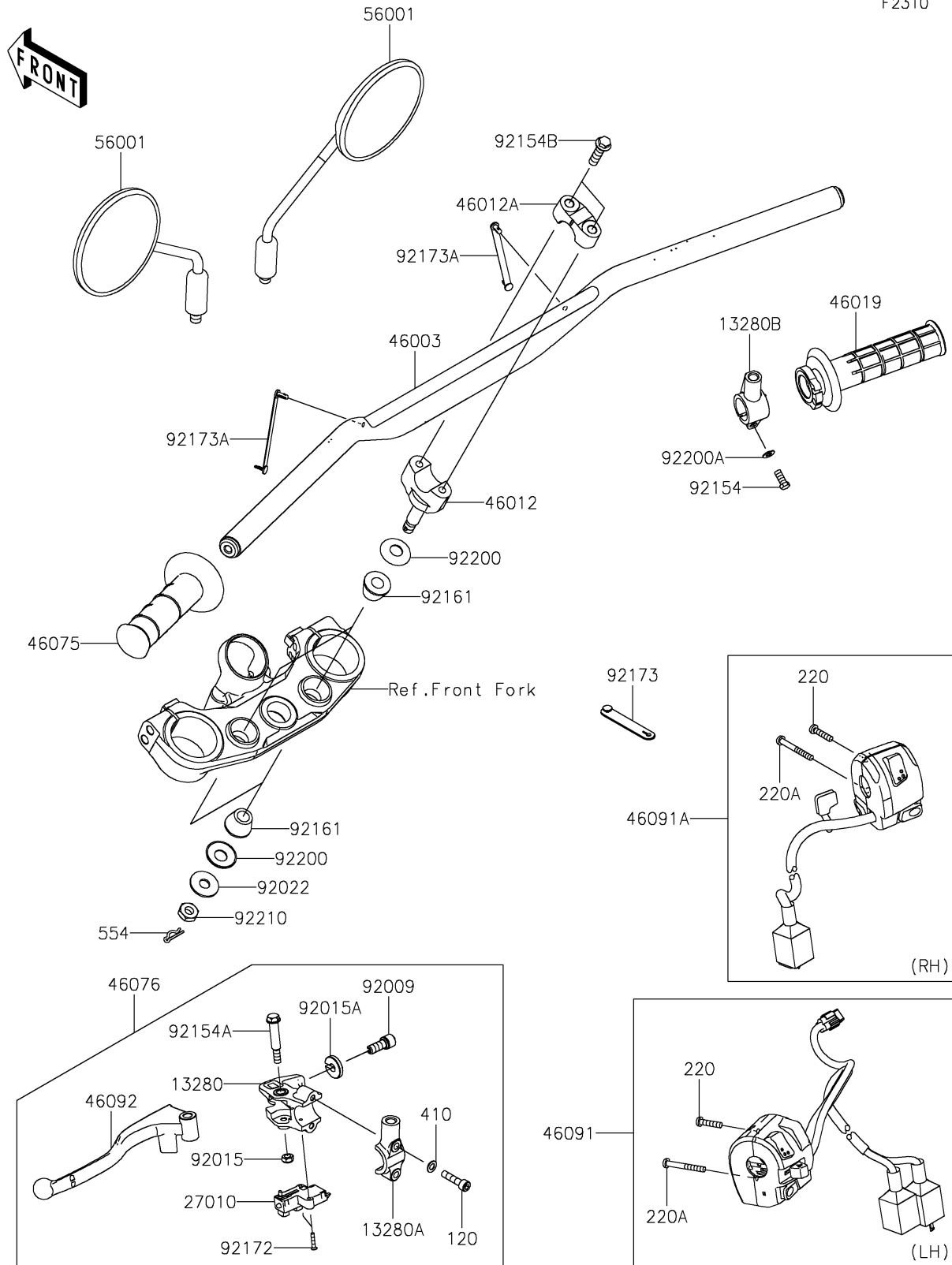


2025 KLX230SM ABS PARTS DIAGRAM

Handlebar

F2310



2025 KLX230SM ABS PARTS LIST

Handlebar

| ITEM NAME | PART NUMBER | QUANTITY |
|--|----------------|----------|
| HOLDER,LEVER (Ref # 13280) | 13280-0929 | 1 |
| HOLDER,MIRROR (Ref # 13280A) | 13280-0930 | 1 |
| HOLDER,MIRROR (Ref # 13280B) | 13280-1000 | 1 |
| SWITCH,CLUTCH (Ref # 27010) | 27010-0729 | 1 |
| HANDLE,F.S.BLACK (Ref # 46003) | 46003-0843-18R | 1 |
| HOLDER-HANDLE,LWR,F.S.BLACK (Ref # 46012) | 46012-0075-18R | 2 |
| HOLDER-HANDLE,UPP,F.S.BLACK (Ref # 46012A) | 46012-0380-18R | 2 |
| GRIP-ASSY,THROTTLE (Ref # 46019) | 46019-0088 | 1 |
| GRIP,LH (Ref # 46075) | 46075-0644 | 1 |
| LEVER-ASSY-GRIP,CLUTCH (Ref # 46076) | 46076-0198 | 1 |
| HOUSING-ASSY-CONTROL,LH (Ref # 46091) | 46091-0455 | 1 |
| HOUSING-ASSY-CONTROL,RH (Ref # 46091A) | 46091-0687 | 1 |
| LEVER-GRIP,CLUTCH (Ref # 46092) | 46092-0586 | 1 |
| MIRROR-ASSY (Ref # 56001) | 56001-0419 | 2 |
| SCREW,CABLE ADJUST,8MM,BLACK (Ref # 92009) | 92009-1134 | 1 |
| NUT,LOCK,6MM,BLACK (Ref # 92015) | 92015-1191 | 1 |
| NUT,CABLE ADJUST LOCK,8MM,BLK (Ref # 92015A) | 92015-1197 | 1 |
| WASHER,10.2X28X2 (Ref # 92022) | 92022-1088 | 2 |
| BOLT,UPSET,6X22 (Ref # 92154) | 92154-1422 | 1 |
| BOLT,FLANGED,6X44 (Ref # 92154A) | 92154-2331 | 1 |
| BOLT,FLANGED,8X30 (Ref # 92154B) | 92154-7282 | 4 |
| DAMPER,12X26X19 (Ref # 92161) | 92161-2116 | 4 |
| SCREW,3X16 (Ref # 92172) | 92172-0183 | 2 |
| CLAMP (Ref # 92173) | 92173-2199 | 1 |
| CLAMP,SPEED,L=80.5 (Ref # 92173A) | 92173-2736 | 2 |
| WASHER,12.5X27.6X1.2 (Ref # 92200) | 92200-0872 | 4 |
| WASHER,6.5X11.5X0.8 (Ref # 92200A) | 92200-0947 | 1 |
| NUT,LOCK,10MM (Ref # 92210) | 92210-1672 | 2 |
| BOLT-SOCKET,6X25 (Ref # 120) | 120CB0625 | 2 |

2025 KLX230SM ABS PARTS LIST

Handlebar

| ITEM NAME | PART NUMBER | QUANTITY |
|------------------------------------|-------------|----------|
| SCREW-PAN-CROS,5X22 (Ref # 220) | 220AB0522 | 2 |
| SCREW-PAN-CROS,5X40 (Ref # 220A) | 220AB0540 | 2 |
| WASHER-PLAIN-SMALL,6MM (Ref # 410) | 410AB0600 | 2 |
| PIN-SNAP (Ref # 554) | 554DA0800 | 2 |