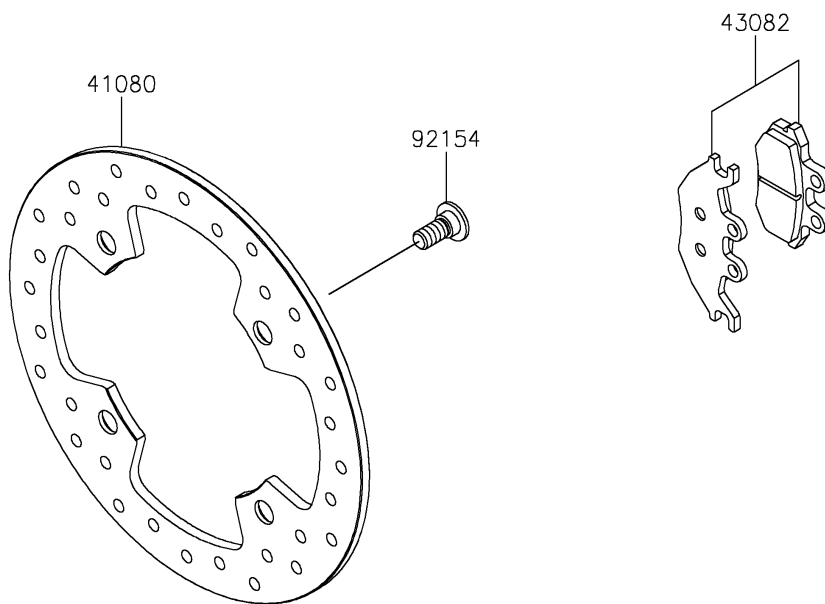
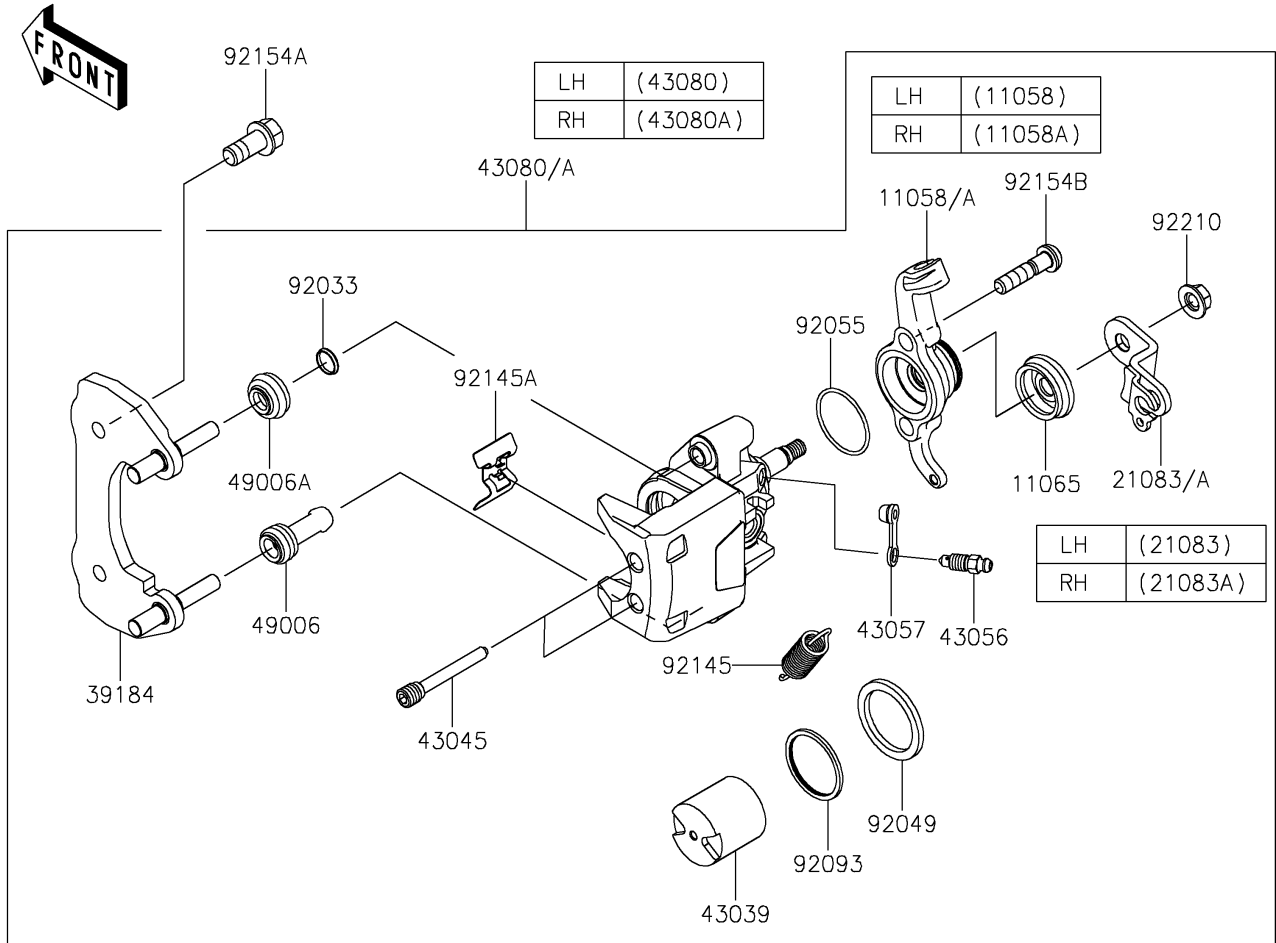


# 2024 RIDGE® XR HVAC PARTS DIAGRAM

Rear Brake

F2294



## 2024 RIDGE® XR HVAC PARTS LIST

### Rear Brake

| ITEM NAME                             | PART NUMBER | QUANTITY |
|---------------------------------------|-------------|----------|
| BRACKET,CALIPER,RR,LH (Ref # 11058)   | 11058-2318  | 1        |
| BRACKET,CALIPER,RR,RH (Ref # 11058A)  | 11058-2319  | 1        |
| CAP (Ref # 11065)                     | 11065-0870  | 2        |
| ARM,BRAKE,RR,LH (Ref # 21083)         | 21083-0771  | 1        |
| ARM,BRAKE,RR,RH (Ref # 21083A)        | 21083-0772  | 1        |
| BRACKET-ASSY,RR (Ref # 39184)         | 39184-0753  | 2        |
| DISC,BRAKE (Ref # 41080)              | 41080-0746  | 2        |
| PISTON-BRAKE (Ref # 43039)            | 43039-0027  | 2        |
| SHAFT-CALIPER (Ref # 43045)           | 43045-Y002  | 4        |
| BREATHER-BRAKE (Ref # 43056)          | 43056-0055  | 2        |
| CAP-BREATHER (Ref # 43057)            | 43057-0552  | 2        |
| CALIPER-SUB-ASSY,RR,LH (Ref # 43080)  | 43080-0252  | 1        |
| CALIPER-SUB-ASSY,RR,RH (Ref # 43080A) | 43080-0253  | 1        |
| PAD-ASSY-BRAKE,RR (Ref # 43082)       | 43082-0209  | 2        |
| BOOT (Ref # 49006)                    | 49006-0591  | 2        |
| BOOT (Ref # 49006A)                   | 49006-0592  | 2        |
| RING-SNAP (Ref # 92033)               | 92033-0864  | 2        |
| SEAL-OIL (Ref # 92049)                | 92049-0765  | 2        |
| RING-O (Ref # 92055)                  | 92055-0795  | 2        |
| SEAL (Ref # 92093)                    | 92093-0613  | 2        |
| SPRING,RETURN,47MM (Ref # 92145)      | 92145-1690  | 2        |
| SPRING,PAD (Ref # 92145A)             | 92145-2364  | 2        |
| BOLT,SOCKET,10X23 (Ref # 92154)       | 92154-0713  | 8        |
| BOLT,FLANGED,10X22 (Ref # 92154A)     | 92154-1327  | 4        |
| BOLT,FLANGE,6X40 (Ref # 92154B)       | 92154-Y228  | 4        |
| NUT (Ref # 92210)                     | 92210-2216  | 2        |