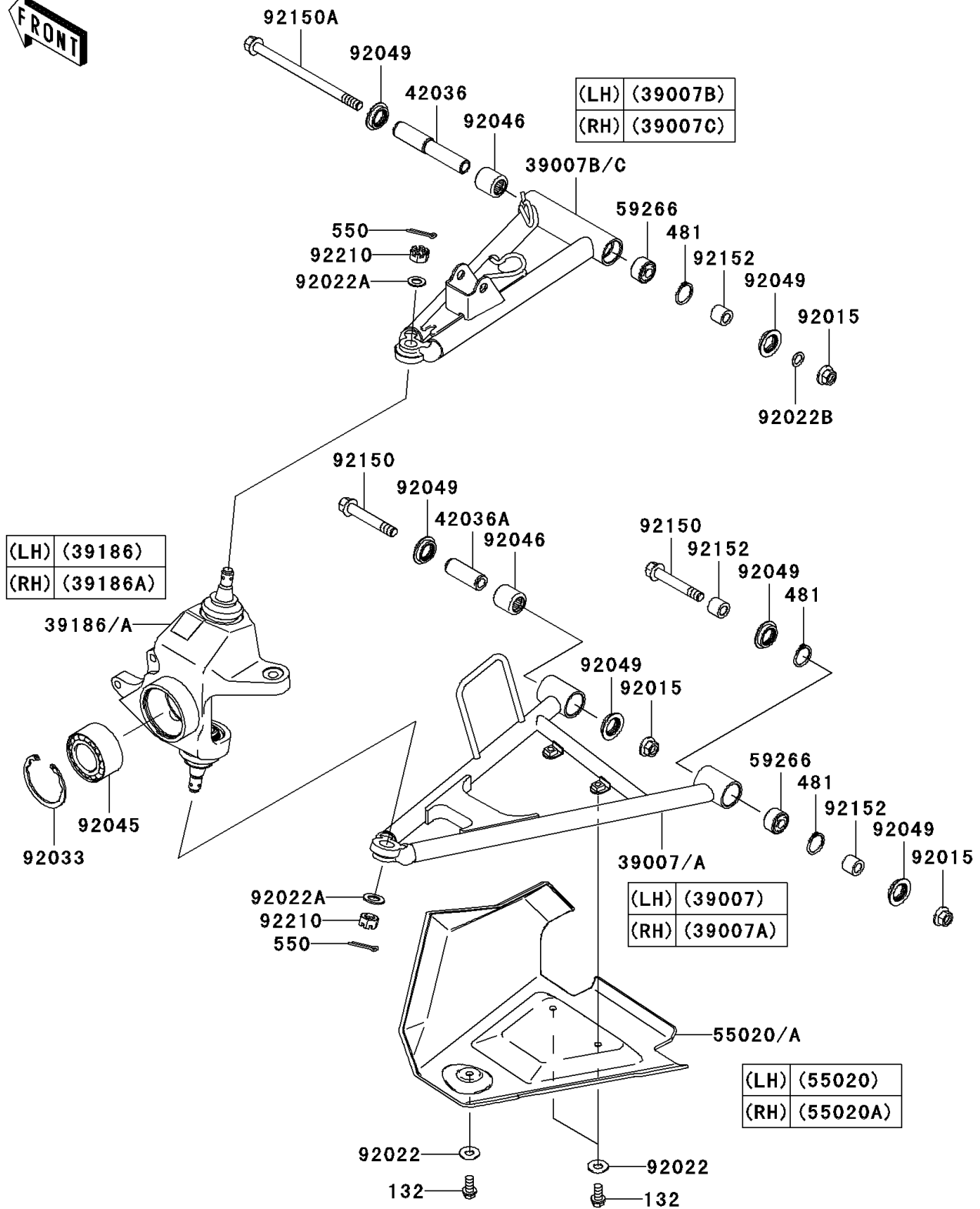


2009 Brute Force® 650 4x4i PARTS DIAGRAM

Front Suspension

F2152



2009 Brute Force® 650 4x4i PARTS LIST

Front Suspension

ITEM NAME	PART NUMBER	QUANTITY
BOLT-FLANGED-SMALL,6X12 (Ref # 132)	132BB0612	6
CIRCLIP (Ref # 481)	481J2400	6
PIN-COTTER,3.0X25 (Ref # 550)	550AA3025	4
ARM-SUSP,FR,LWR,LH (Ref # 39007)	39007-0064	1
ARM-SUSP,FR,LWR,RH (Ref # 39007A)	39007-0065	1
ARM-SUSP,FR,UPP,LH (Ref # 39007B)	39007-0066	1
ARM-SUSP,FR,UPP,RH (Ref # 39007C)	39007-0067	1
KNUCKLE ASSY,FR,LH (Ref # 39186)	39186-0033	1
KNUCKLE ASSY,FR,RH (Ref # 39186A)	39186-0034	1
SLEEVE,SUSPENSION ARM (Ref # 42036)	42036-0016	2
SLEEVE (Ref # 42036A)	42036-1376	2
GUARD,FRONT ARM,LH,F.BLACK (Ref # 55020)	55020-0109-6Z	1
GUARD,FRONT ARM,RH,F.BLACK (Ref # 55020A)	55020-0110-6Z	1
JOINT-BALL (Ref # 59266)	59266-0013	4
NUT,FLANGED,10MM (Ref # 92015)	92015-1415	6
WASHER,7X16X1.2 (Ref # 92022)	92022-024	6
WASHER,12.3X22X1.6 (Ref # 92022A)	92022-1065	4
WASHER,10.2X16X1 (Ref # 92022B)	92022-1829	AR
RING-SNAP,55MM (Ref # 92033)	92033-1274	2
BEARING-BALL,30BWD08ACA13 (Ref # 92045)	92045-0095	2
BEARING-NEEDLE (Ref # 92046)	92046-1046	4
SEAL-OIL,MHA17245.7F (Ref # 92049)	92049-1223	12
BOLT,FLANGED,10X63 (Ref # 92150)	92150-1384	4
BOLT,FLANGED,10X150 (Ref # 92150A)	92150-1686	2
COLLAR,10X17X14.5 (Ref # 92152)	92152-1455	6
NUT,CASTLE,12MM (Ref # 92210)	92210-0395	4