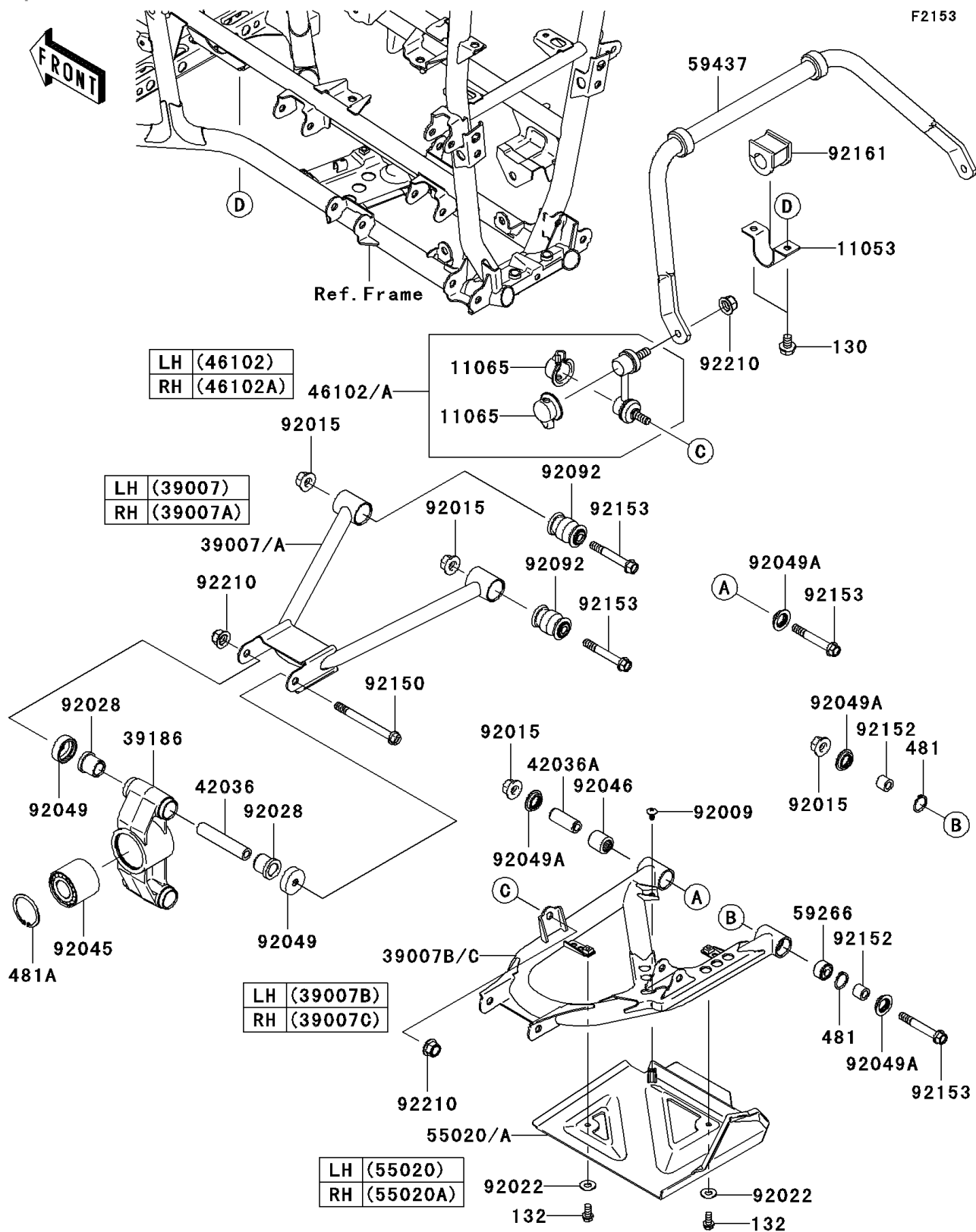


# 2009 Brute Force<sup>®</sup> 650 4x4i PARTS DIAGRAM

## Rear Suspension



## 2009 Brute Force® 650 4x4i PARTS LIST

### Rear Suspension

ITEM NAME	PART NUMBER	QUANTITY
BOLT-FLANGED,8X12 (Ref # 130)	130BB0812	4
BOLT-FLANGED-SMALL,6X12 (Ref # 132)	132BB0612	4
CIRCLIP (Ref # 481)	481J2400	4
CIRCLIP (Ref # 481A)	481J5200	2
BRACKET,STABILIZER (Ref # 11053)	11053-1833	2
CAP (Ref # 11065)	11065-0086	4
ARM-SUSP,RR,UPP,LH (Ref # 39007)	39007-0021	1
ARM-SUSP,RR,UPP,RH (Ref # 39007A)	39007-0022	1
ARM-SUSP,RR,LWR,LH (Ref # 39007B)	39007-0038	1
ARM-SUSP,RR,LWR,RH (Ref # 39007C)	39007-0039	1
KNUCKLE,RR (Ref # 39186)	39186-0030	2
SLEEVE,10X17X85.6 (Ref # 42036)	42036-1190	4
SLEEVE (Ref # 42036A)	42036-1376	2
ROD,STABILIZER,LH (Ref # 46102)	46102-0055	1
ROD,STABILIZER,RH (Ref # 46102A)	46102-0056	1
GUARD,REAR ARM,LH,F.BLACK (Ref # 55020)	55020-0166-6Z	1
GUARD,REAR ARM,RH,F.BLACK (Ref # 55020A)	55020-0167-6Z	1
JOINT-BALL (Ref # 59266)	59266-0013	2
STABILIZER (Ref # 59437)	59437-0001	1
SCREW,6X12 (Ref # 92009)	92009-1480	2
NUT,FLANGED,10MM (Ref # 92015)	92015-1415	8
WASHER,7X16X1.2 (Ref # 92022)	92022-024	4
BUSHING (Ref # 92028)	92028-1466	8
BEARING-BALL,DAC2552W-7CS31 (Ref # 92045)	92045-0102	2
BEARING-NEEDLE (Ref # 92046)	92046-1046	2
SEAL-OIL,KNUCKLE (Ref # 92049)	92049-1198	8
SEAL-OIL,MHA17245.7F (Ref # 92049A)	92049-1223	8
BUSHING-RUBBER (Ref # 92092)	92092-0004	4
BOLT,FLANGED,10X105 (Ref # 92150)	92150-1624	4

## 2009 Brute Force® 650 4x4i PARTS LIST

### Rear Suspension

ITEM NAME	PART NUMBER	QUANTITY
COLLAR,10X17X14.5 (Ref # 92152)	92152-1455	4
BOLT,FLANGED,10X70 (Ref # 92153)	92153-0666	8
DAMPER (Ref # 92161)	92161-0265	2
NUT,LOCK,FLANGED,10MM (Ref # 92210)	92210-0276	8