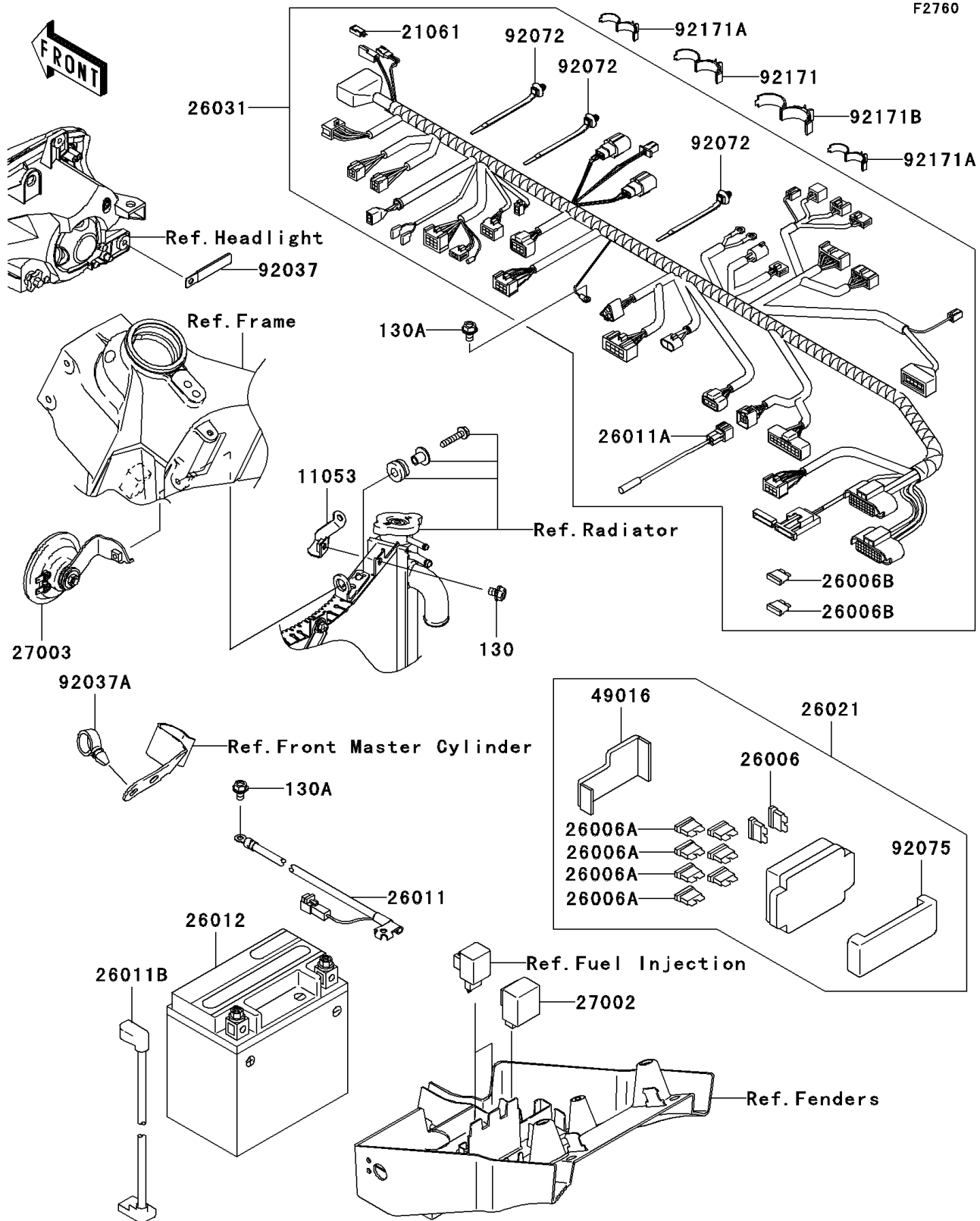


# 2003 Ninja® ZX™-6RR PARTS DIAGRAM

## Chassis Electrical Equipment



## 2003 Ninja® ZX™ -6RR PARTS LIST

### Chassis Electrical Equipment

| ITEM NAME                             | PART NUMBER | QUANTITY |
|---------------------------------------|-------------|----------|
| BOLT-FLANGED (Ref # 130)              | 130J0610    | 1        |
| BOLT-FLANGED,6X10 (Ref # 130A)        | 130V0610    | 2        |
| BRACKET,RADIATOR (Ref # 11053)        | 11053-1228  | 1        |
| RECTIFIER (Ref # 21061)               | 21061-0001  | 1        |
| FUSE,30A-G (Ref # 26006)              | 26006-1067  | 1        |
| FUSE,10A-R (Ref # 26006A)             | 26006-1068  | 8        |
| FUSE,15A (Ref # 26006B)               | 26006-1075  | 2        |
| WIRE-LEAD,BATTERY(-) (Ref # 26011)    | 26011-0004  | 1        |
| WIRE-LEAD,DIAGNOSIS (Ref # 26011A)    | 26011-1774  | 1        |
| WIRE-LEAD,BATTERY(+) (Ref # 26011B)   | 26011-1843  | 1        |
| BATTERY,YTX9-BS,12V 8AH (Ref # 26012) | 26012-1326  | 1        |
| JUNCTION BOX (Ref # 26021)            | 26021-1089  | 1        |
| HARNESS,MAIN (Ref # 26031)            | 26031-1058  | 1        |
| RELAY-ASSY,TURN SIGNAL (Ref # 27002)  | 27002-1101  | 1        |
| HORN (Ref # 27003)                    | 27003-1433  | 1        |
| COVER-SEAL,FUSE (Ref # 49016)         | 49016-1177  | 1        |
| CLAMP,L=60 (Ref # 92037)              | 92037-1069  | 1        |
| CLAMP,HOSE (Ref # 92037A)             | 92037-1827  | 1        |
| BAND (Ref # 92072)                    | 92072-1414  | 3        |
| DAMPER,JUNCTION BOX (Ref # 92075)     | 92075-1688  | 1        |
| CLAMP,DIA=20 (Ref # 92171)            | 92171-0081  | 1        |
| CLAMP,DIA=15 (Ref # 92171A)           | 92171-1424  | 2        |
| CLAMP,DIA=25 (Ref # 92171B)           | 92171-1559  | 1        |