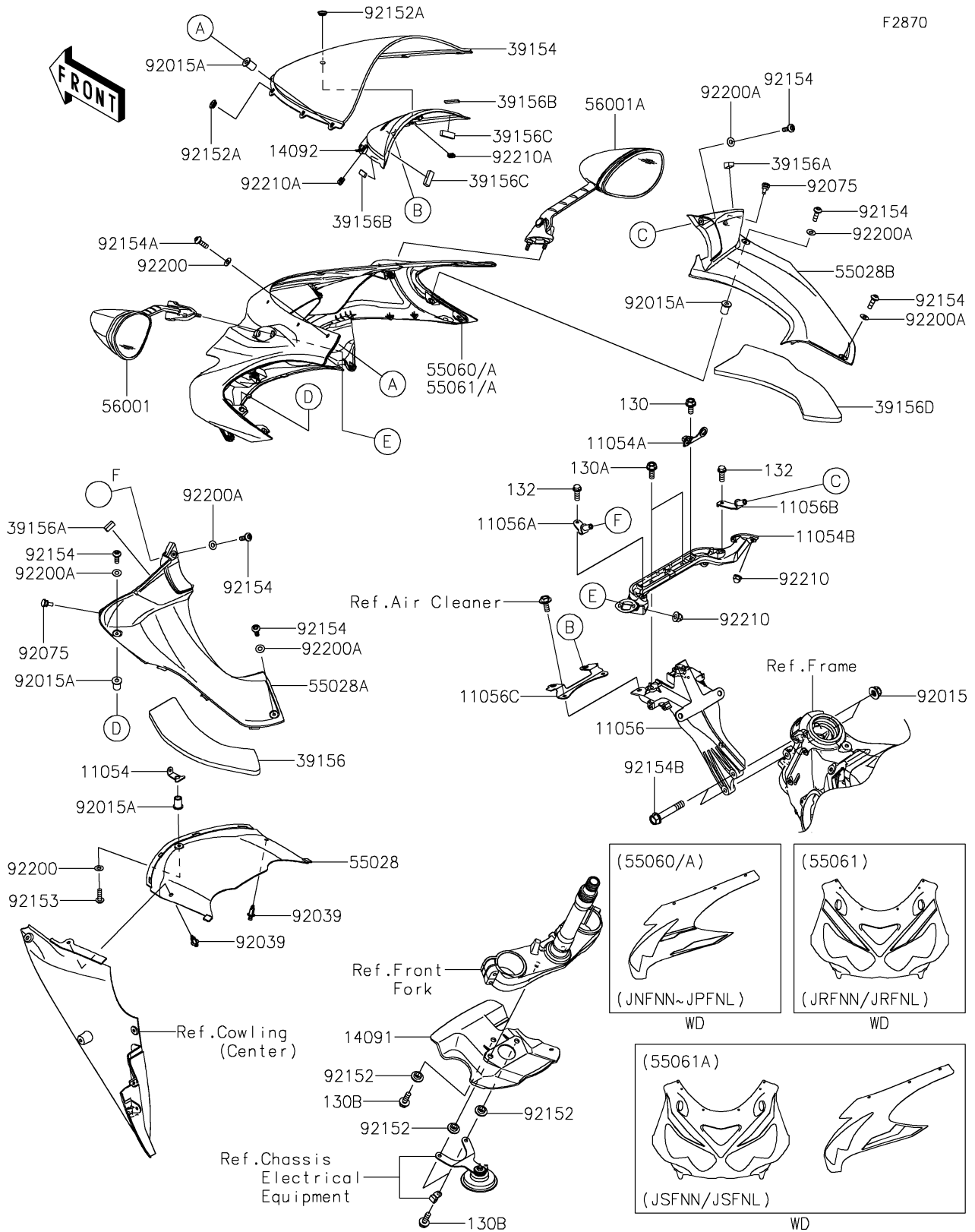


2024 Ninja ZX-14R ABS SE PARTS DIAGRAM

Cowling(Upper)

F2870



2024 Ninja ZX-14R ABS SE PARTS LIST

Cowling(Upper)

| ITEM NAME | PART NUMBER | QUANTITY |
|-----------------------------------------|----------------|----------|
| BRACKET,UPP COWLING (Ref # 11054) | 11054-0180 | 1 |
| BRACKET,DOWN SENSOR (Ref # 11054A) | 11054-0239 | 1 |
| BRACKET,MIRROR (Ref # 11054B) | 11054-1307 | 1 |
| BRACKET,METER (Ref # 11056) | 11056-1544 | 1 |
| BRACKET,INNER COWLING,LH (Ref # 11056A) | 11056-2211 | 1 |
| BRACKET,INNER COWLING,RH (Ref # 11056B) | 11056-2212 | 1 |
| BRACKET (Ref # 11056C) | 11056-2273 | 1 |
| COVER,RADIATOR (Ref # 14091) | 14091-0624 | 1 |
| COVER,METER,F.BLACK (Ref # 14092) | 14092-0985-6Z | 1 |
| WINDSHIELD (Ref # 39154) | 39154-0014 | 1 |
| PAD,INNER COWLING,LH (Ref # 39156) | 39156-0777 | 1 |
| PAD (Ref # 39156A) | 39156-0876 | 2 |
| PAD,8X30X3 (Ref # 39156B) | 39156-0930 | 2 |
| PAD,8X30X10 (Ref # 39156C) | 39156-0931 | 2 |
| PAD,INNER COWLING,RH (Ref # 39156D) | 39156-1998 | 1 |
| COWLING,FR,CNT (Ref # 55028) | 55028-0095 | 1 |
| COWLING,INNER,LH,F.BLACK (Ref # 55028A) | 55028-0622-6Z | 1 |
| COWLING,INNER,RH,F.BLACK (Ref # 55028B) | 55028-0623-6Z | 1 |
| COWLING,UPP,L.GREEN (Ref # 55061) | 55061-5160-777 | 1 |
| MIRROR-ASSY,LH (Ref # 56001) | 56001-0397 | 1 |
| MIRROR-ASSY,RH (Ref # 56001A) | 56001-0398 | 1 |
| NUT,8MM (Ref # 92015) | 92015-1432 | 2 |
| NUT,WELL,5MM (Ref # 92015A) | 92015-1757 | 7 |
| RIVET (Ref # 92039) | 92039-0023 | 2 |
| DAMPER,6X10X15 (Ref # 92075) | 92075-1808 | 2 |
| COLLAR,6.5X10X5.6 (Ref # 92152) | 92152-0445 | 3 |
| COLLAR,5.2X9.9X3.7 (Ref # 92152A) | 92152-1690 | 2 |
| BOLT,SOCKET,5X16 (Ref # 92153) | 92153-1244 | 1 |
| BOLT,SOCKET,5X16 (Ref # 92154) | 92154-0026 | 6 |

2024 Ninja ZX-14R ABS SE PARTS LIST

Cowling(Upper)

| ITEM NAME | PART NUMBER | QUANTITY |
|------------------------------------------|-------------|----------|
| BOLT,SOCKET,5X16 (Ref # 92154A) | 92154-0209 | 6 |
| BOLT,FLANGED,8X48 (Ref # 92154B) | 92154-1296 | 2 |
| WASHER,NYLONE,5.3X11.5X0.5 (Ref # 92200) | 92200-0006 | 7 |
| WASHER,NYLON,5.3X11.5X0.5 (Ref # 92200A) | 92200-1480 | 6 |
| NUT,CAP,6MM (Ref # 92210) | 92210-0322 | 4 |
| NUT (Ref # 92210A) | 92210-0571 | 2 |
| BOLT-FLANGED,6X14 (Ref # 130) | 130BA0614 | 1 |
| BOLT-FLANGED,6X16 (Ref # 130A) | 130BA0616 | 2 |
| BOLT-FLANGED,6X18 (Ref # 130B) | 130BA0618 | 3 |
| BOLT-FLANGED-SMALL,6X16 (Ref # 132) | 132BA0616 | 2 |