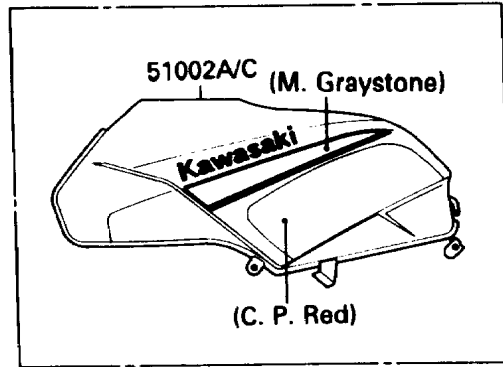
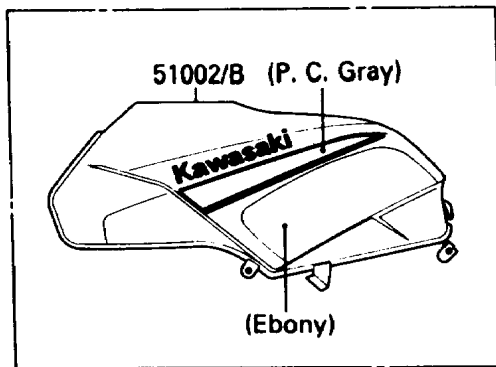
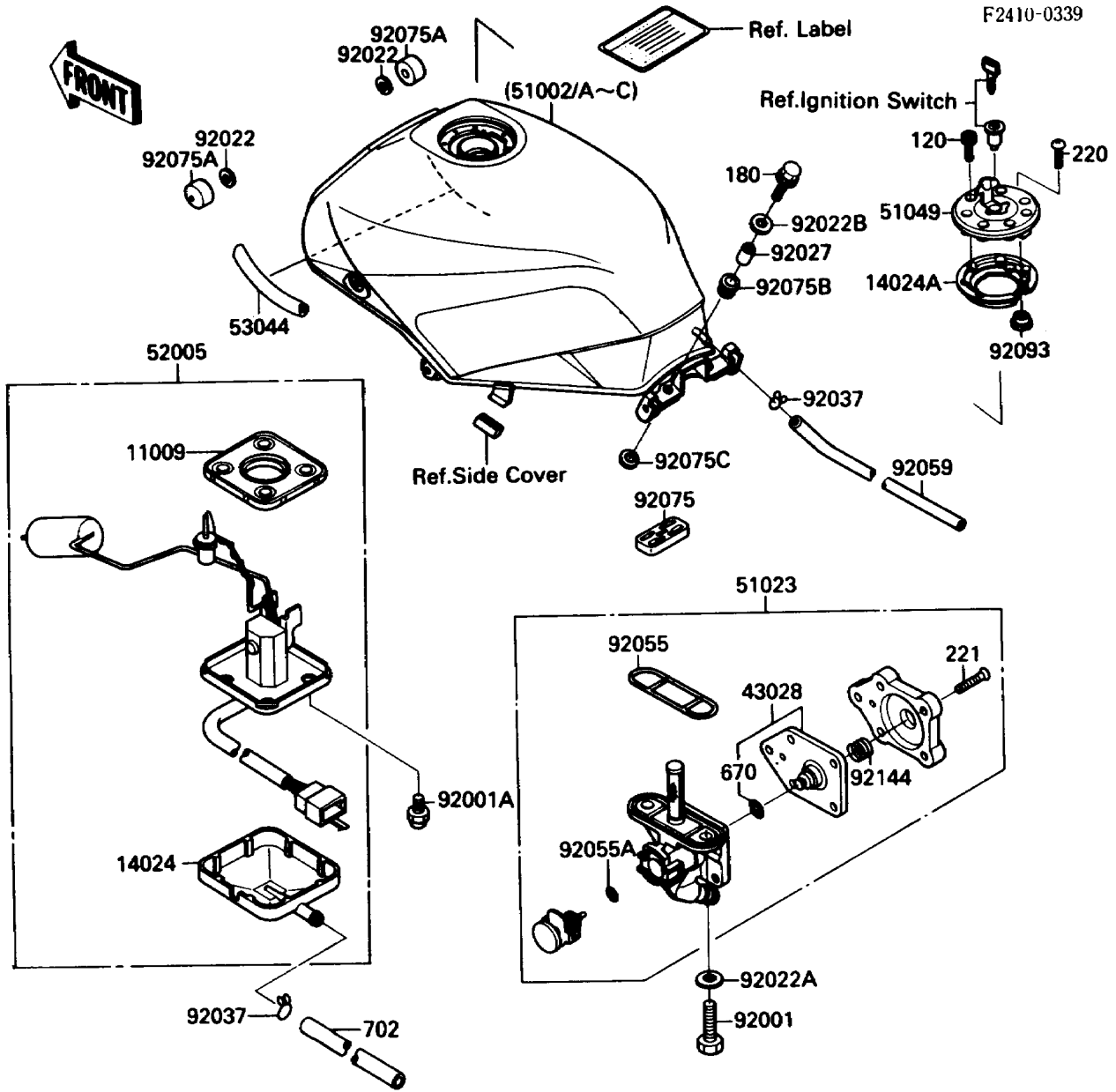


# 1988 NINJA® 750R PARTS DIAGRAM

Fuel Tank



# 1988 NINJA® 750R PARTS LIST

## Fuel Tank

ITEM NAME	PART NUMBER	QUANTITY
GASKET,FUEL GAUGE (Ref # 11009)	11009-1656	1
COVER,FUEL GAUGE (Ref # 14024)	14025-1536	1
COVER,TANK CAP (Ref # 14024A)	14025-1913	1
DIAPHRAGM,TAP (Ref # 43028)	43028-1068	1
TAP-ASSY,FUEL (Ref # 51023)	51023-1133	1
CAP-TANK,FUEL (Ref # 51049)	51049-1079	1
GAUGE,FUEL (Ref # 52005)	52005-1088	1
TRIM,FUEL TANK (Ref # 53044)	53044-1171	1
BOLT,6X20 (Ref # 92001)	92001-1091	2
BOLT,FUEL GAUGE (Ref # 92001A)	92001-1705	4
WASHER,10.5X26X2.3 (Ref # 92022)	92022-044	2
WASHER,6.2X11X1.5 (Ref # 92022A)	92022-183	2
WASHER,6.5X22X1.6 (Ref # 92022B)	92022-237	2
COLLAR,6.8X10X14.5 (Ref # 92027)	92027-156	2
CLAMP,TUBE (Ref # 92037)	92037-147	2
RING-O,FUEL TAP PACKING (Ref # 92055)	92055-1112	1
RING-O,TAP BOTTOM (Ref # 92055A)	92055-1377	1
TUBE,6X10X335 (Ref # 92059)	92059-1830	1
DAMPER,FUEL TANK,RR (Ref # 92075)	92075-1114	1
DAMPER,FUEL TANK (Ref # 92075A)	92075-125	2
DAMPER,MALE (Ref # 92075B)	92075-174	2
BOLT-SOCKET (Ref # 120)	120S0512	7
BOLT-UPSET-WS (Ref # 180)	180G0625	2
SCREW-PAN-CROS (Ref # 220)	220C0508	1
SCREW-CSK-CROS,4X14 (Ref # 221)	221B0414	5
O RING,4MM (Ref # 670)	670B1504	1
TUBE-RUBBER (Ref # 702)	702A07480	1
DAMPER,FEMALE (Ref # 92075C)	92075-175	2
SPRING,TAP DIAPHRAGM (Ref # 92144)	92144-1119	1

# 1988 NINJA® 750R PARTS LIST

## Fuel Tank

ITEM NAME	PART NUMBER	QUANTITY
TANK-COMP-FUEL,EBONY (Ref # 51002)	51002-5354-H8	1
TANK-COMP-FUEL,C.P.RED (Ref # 51002A)	51002-5355-A5	1
TANK-COMP-FUEL,EBONY (Ref # 51002B)	51002-5356-H8	1
TANK-COMP-FUEL,C.P.RED (Ref # 51002C)	51002-5357-A5	1
SEAL,FUEL TANK CAP (Ref # 92093)	92093-1030	1