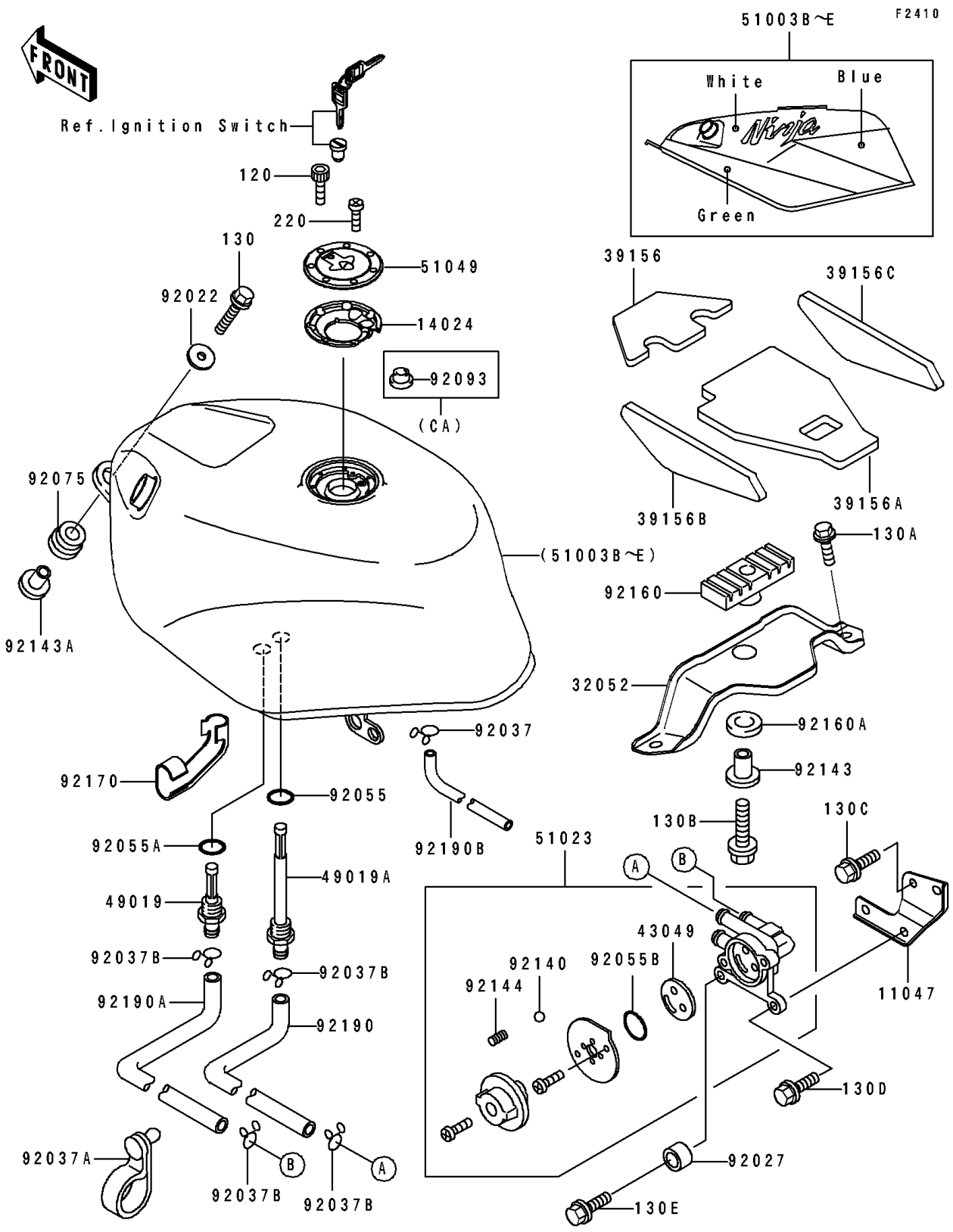


1991 Ninja® ZX™-7R PARTS DIAGRAM

Fuel Tank



1991 Ninja® ZX™-7R PARTS LIST

Fuel Tank

ITEM NAME	PART NUMBER	QUANTITY
BRACKET,FUEL TAP (Ref # 11047)	11047-1268	1
COVER,TANK CAP (Ref # 14024)	14025-1913	1
BRACKET-TANK,RR (Ref # 32052)	32052-1323	1
PAD,FUEL TANK,FR (Ref # 39156)	39156-1248	1
PAD,FUEL TANK,CNT (Ref # 39156A)	39156-1249	1
PAD,FUEL TANK,SIDE,LH (Ref # 39156B)	39156-1250	1
PAD,FUEL TANK,SIDE,RH (Ref # 39156C)	39156-1251	1
PACKING,TAP VALVE (Ref # 43049)	43049-1066	1
FILTER-FUEL (Ref # 49019)	49019-1070	1
FILTER-FUEL,"ON" (Ref # 49019A)	49019-1071	1
TANK-COMP-FUEL,GREEN/WHITE/BLU (Ref # 51003B)	51003-5258-KE	1
TANK-COMP-FUEL,GREEN/WHITE/BLU (Ref # 51003D)	51003-5281-KE	1
TANK-COMP-FUEL,GREEN/WHITE/BLU (Ref # 51003E)	51003-5282-KE	1
TAP-ASSY,FUEL (Ref # 51023)	51023-1172	1
CAP-TANK,FUEL (Ref # 51049)	51049-1091	1
WASHER,6.5X20X1.6 (Ref # 92022)	92022-125	2
COLLAR,6.8X10X6 (Ref # 92027)	92027-103	1
CLAMP,TUBE (Ref # 92037)	92037-147	1
CLAMP (Ref # 92037A)	92037-1903	1
CLAMP,TUBE (Ref # 92037B)	92037-1972	4
RING-O,ID=9.5 (Ref # 92055)	92055-1386	1
RING-O,11.5X1.5 (Ref # 92055A)	92055-1387	1
RING-O,TAP LEVER (Ref # 92055B)	92055-1419	1
DAMPER (Ref # 92075)	92075-112	2
SEAL,FUEL TANK CAP (Ref # 92093)	92093-1030	1
BALL,STAINLESS,5/32" (Ref # 92140)	92140-1051	1
COLLAR (Ref # 92143)	92143-1484	1
COLLAR (Ref # 92143A)	92143-1515	2
SPRING,FUEL TAP KNOB (Ref # 92144)	92144-1212	1

1991 Ninja® ZX™-7R PARTS LIST

Fuel Tank

ITEM NAME	PART NUMBER	QUANTITY
DAMPER,FUEL TANK,RR (Ref # 92160)	92160-1271	1
DAMPER,FUEL TANK,RR (Ref # 92160A)	92160-1277	1
CLAMP,TUBE (Ref # 92170)	92170-1282	1
TUBE,FUEL,"ON" (Ref # 92190)	92190-1192	1
TUBE,FUEL,"RES" (Ref # 92190A)	92190-1193	1
TUBE,DRAIN (Ref # 92190B)	92190-1260	1
BOLT-SOCKET (Ref # 120)	120S0512	7
BOLT-FLANGED,6X30 (Ref # 130)	130G0630	2
BOLT-FLANGED,8X20 (Ref # 130A)	130H0820	2
BOLT-FLANGED,8X30 (Ref # 130B)	130H0830	1
BOLT-FLANGED,6X8 (Ref # 130C)	130J0608	2
BOLT-FLANGED,6X16,BLACK (Ref # 130D)	130J0616	1
BOLT-FLANGED,6X25 (Ref # 130E)	130J0625	1
SCREW-PAN-CROS (Ref # 220)	220C0508	1