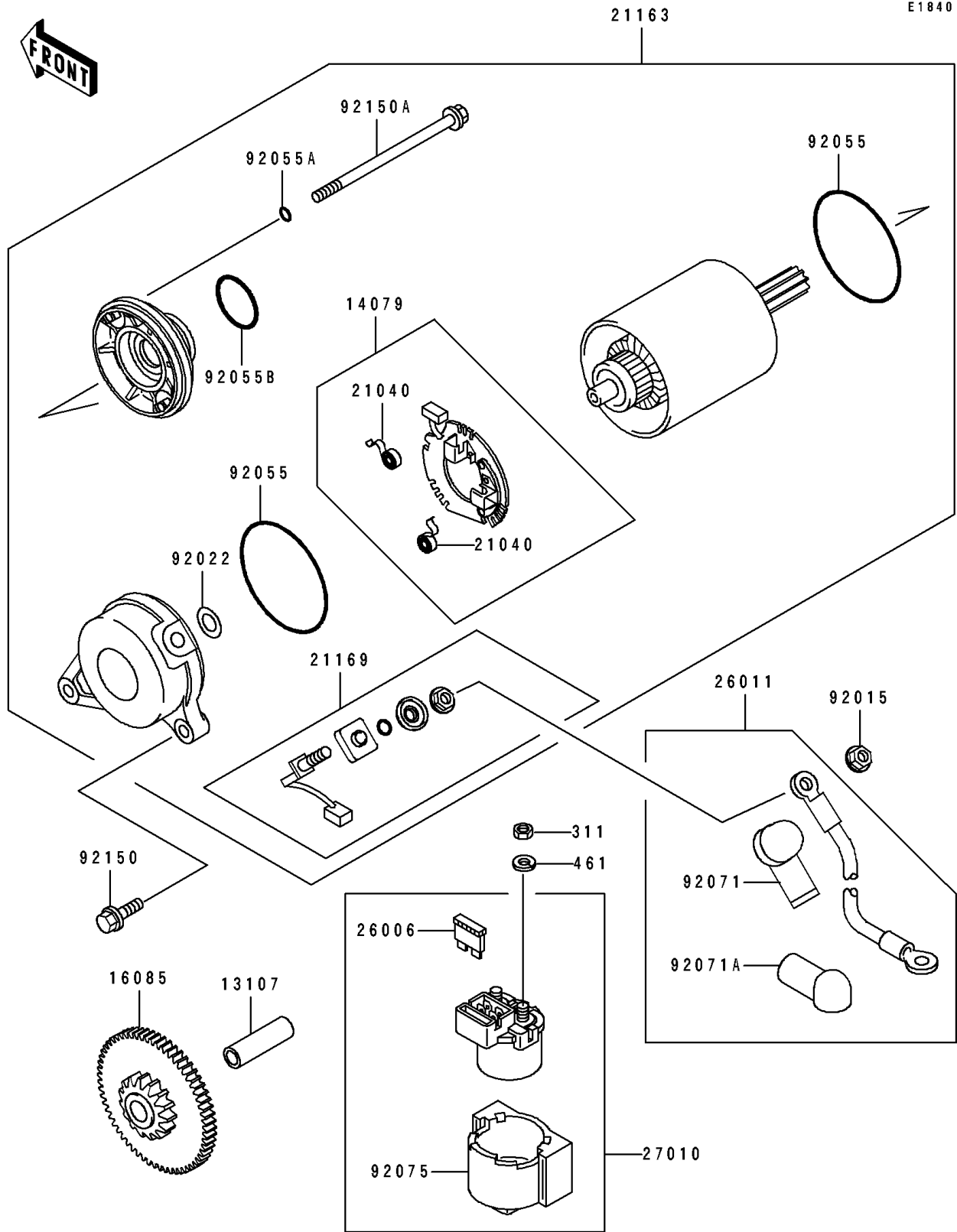


# 1994 Ninja® ZX™ -7 PARTS DIAGRAM

Starter Motor



# 1994 Ninja® ZX™-7 PARTS LIST

## Starter Motor

| ITEM NAME                              | PART NUMBER | QUANTITY |
|--|-------------|----------|
| SHAFT (Ref # 13107)                    | 13107-1112  | 1        |
| HOLDER-ASSY,CARBON BRUSH (Ref # 14079) | 14079-1082  | 1        |
| GEAR,IDLE (Ref # 16085)                | 16085-1104  | 1        |
| SPRING-BRUSH (Ref # 21040)             | 21040-1051  | 2        |
| STARTER-ELECTRIC (Ref # 21163)         | 21163-1193  | 1        |
| TERMINAL,STARTER (Ref # 21169)         | 21169-1058  | 1        |
| FUSE,30A-G (Ref # 26006)               | 26006-1006  | 1        |
| WIRE-LEAD (Ref # 26011)                | 26011-1524  | 1        |
| SWITCH,MAGNETIC (Ref # 27010)          | 27010-1213  | 1        |
| NUT (Ref # 92015)                      | 92015-1623  | 1        |
| WASHER (Ref # 92022)                   | 92022-2200  | 1        |
| RING-O,62MM (Ref # 92055)              | 92055-1260  | 2        |
| RING-O,4.5MM (Ref # 92055A)            | 92055-1261  | 2        |
| RING-O,24.4MM (Ref # 92055B)           | 92055-1262  | 1        |
| GROMMET,STARTER TERMINAL (Ref # 92071) | 92071-1120  | 1        |
| GROMMET,TERMINAL (Ref # 92071A)        | 92071-1121  | 1        |
| DAMPER,MAGNETIC SWITCH (Ref # 92075)   | 92075-1863  | 1        |
| BOLT,6X20 (Ref # 92150)                | 92150-1010  | 2        |
| BOLT (Ref # 92150A)                    | 92150-1237  | 2        |
| NUT-HEX,6MM (Ref # 311)                | 311B0600    | 2        |
| WASHER-SPRING,6MM (Ref # 461)          | 461F0600    | 2        |