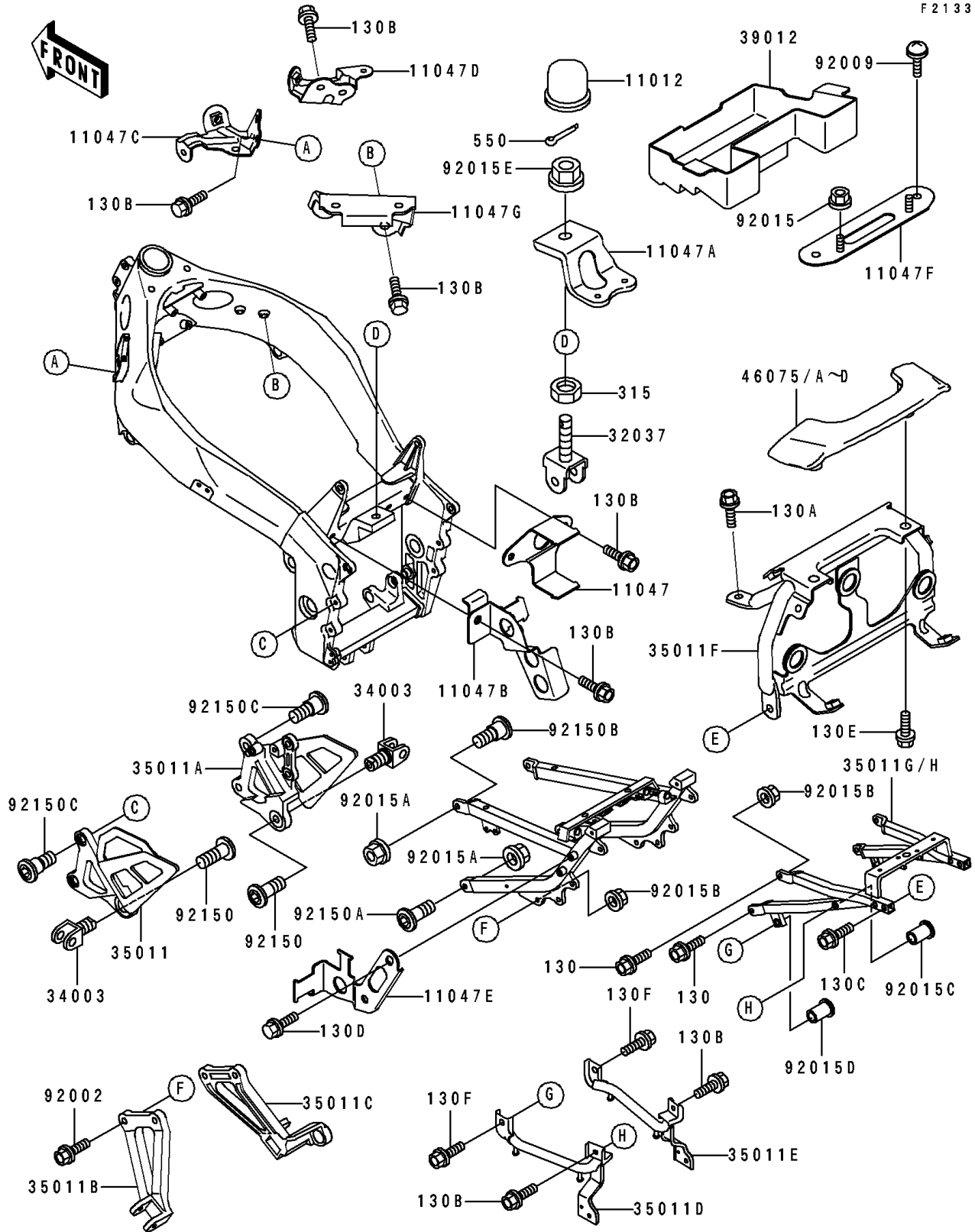


# 1994 Ninja® ZX™ -7 PARTS DIAGRAM

## Electro Bracket

F 2133



# 1994 Ninja® ZX™-7 PARTS LIST

## Electro Bracket

ITEM NAME	PART NUMBER	QUANTITY
CAP (Ref # 11012)	11012-1844	1
BRACKET,FUEL PUMP (Ref # 11047)	11047-1265	1
BRACKET,BATTERY (Ref # 11047A)	11047-1267	1
BRACKET,FUEL FILTER (Ref # 11047B)	11047-1852	1
BRACKET,RADIATOR,LH (Ref # 11047C)	11047-1853	1
BRACKET,RADIATOR,RH (Ref # 11047D)	11047-1854	1
BRACKET,RELAY&SEAT LOCK (Ref # 11047E)	11047-1855	1
BRACKET,IGNITER (Ref # 11047F)	11047-1858	1
BRACKET (Ref # 11047G)	11047-1967	1
BRACKET-SHOCKABSORBER (Ref # 32037)	32037-1564	1
HOLDER-STEP (Ref # 34003)	34003-1327	2
STAY,FR,LH (Ref # 35011)	35011-1552	1
STAY,FR,RH (Ref # 35011A)	35011-1553	1
STAY,RR,LH (Ref # 35011B)	35011-1554	1
STAY,RR,RH (Ref # 35011C)	35011-1555	1
STAY,REAR GRIP,LH (Ref # 35011D)	35011-1559	1
STAY,REAR GRIP,RH (Ref # 35011E)	35011-1560	1
STAY,TAIL LAMP (Ref # 35011F)	35011-1628	1
STAY,REAR FRAME,SILVER NO.30 (Ref # 35011G)	35011-1632-KF	1
CASE-STORAGE (Ref # 39012)	39012-1056	1
GRIP,GRABRAIL,EBONY (Ref # 46075A)	46075-1100-H8	1
GRIP,GRABRAIL,P.A.WHITE (Ref # 46075C)	46075-1100-R1	1
BOLT,FLANGED,8X30 (Ref # 92002)	92002-1445	4
SCREW,6X14 (Ref # 92009)	92009-1662	2
NUT,FLANGED,6MM (Ref # 92015)	92015-1367	2
NUT,FLANGED,10MM (Ref # 92015A)	92015-1387	4
NUT,FLANGED,8MM (Ref # 92015B)	92015-1406	8
NUT,POP,6MM,L=15 (Ref # 92015C)	92015-1791	2
NUT,POP,8MM,L=18 (Ref # 92015D)	92015-1794	2

# 1994 Ninja® ZX™ -7 PARTS LIST

## Electro Bracket

ITEM NAME	PART NUMBER	QUANTITY
NUT,FLANGED,16MM (Ref # 92015E)	92015-1881	1
BOLT,SOCKET,10X25 (Ref # 92150)	92150-1268	2
BOLT,10X35 (Ref # 92150A)	92150-1295	2
BOLT,SOCKET,10X30 (Ref # 92150B)	92150-1517	2
BOLT,SOCKET,8X20 (Ref # 92150C)	92150-1839	4
BOLT-FLANGED,8X25 (Ref # 130)	130H0825	4
BOLT-FLANGED,6X14,BLACK (Ref # 130A)	130J0614	2
BOLT-FLANGED,6X16,BLACK (Ref # 130B)	130J0616	11
BOLT-FLANGED,6X35 (Ref # 130C)	130J0635	2
BOLT-FLANGED,6X55,BLACK (Ref # 130D)	130J0655	2
BOLT-FLANGED,8X16,BLACK (Ref # 130E)	130J0816	2
BOLT-FLANGED,8X20 (Ref # 130F)	130J0820	2
NUT-HEX-FINE,16MM (Ref # 315)	315B1600	1
PIN-COTTER,4.0X25 (Ref # 550)	550D4025	1