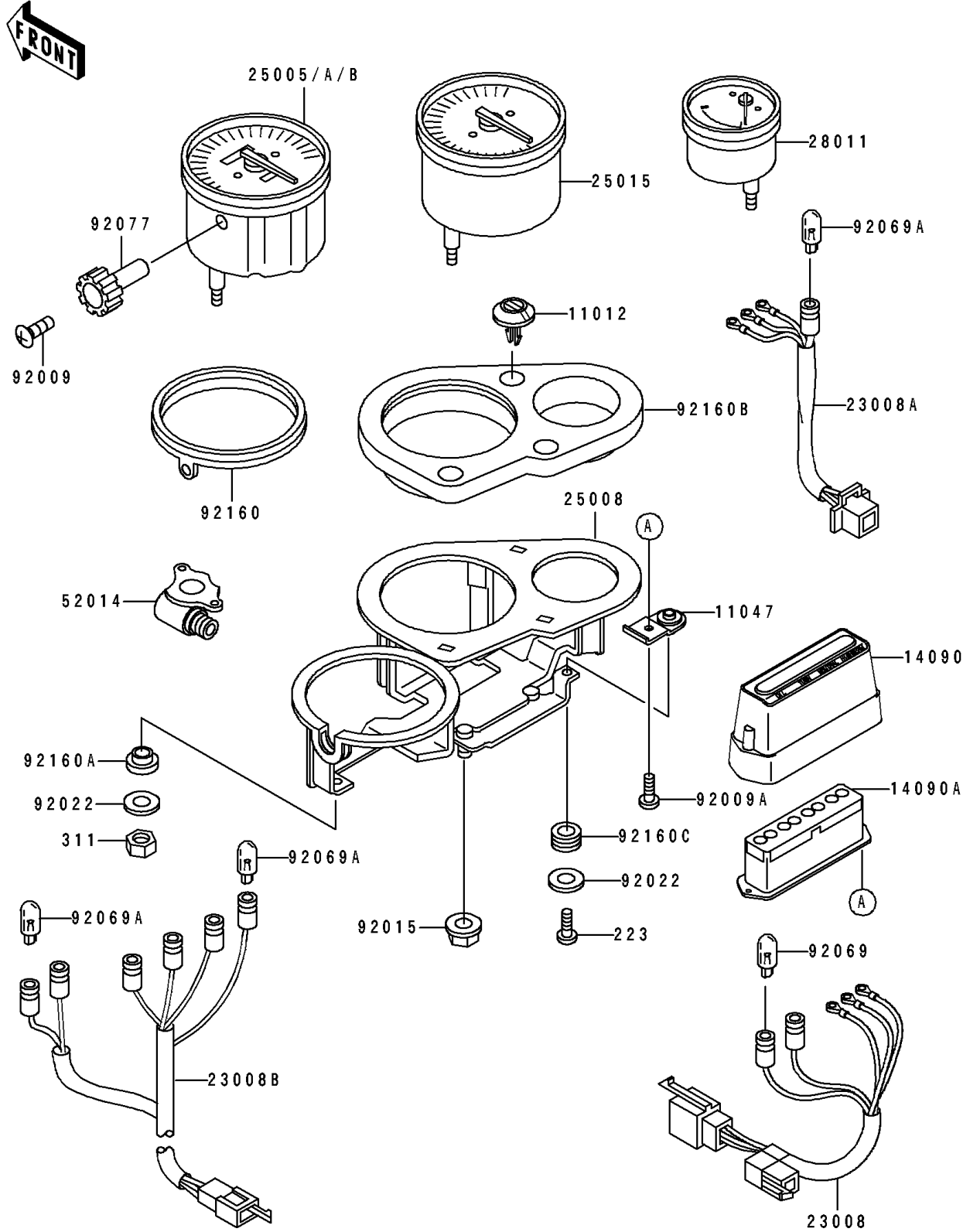


# 1995 Ninja® ZX™ -7 PARTS DIAGRAM

Meter(s)

F2530



# 1995 Ninja® ZX™-7 PARTS LIST

Meter(s)

| ITEM NAME                              | PART NUMBER | QUANTITY |
|--|-------------|----------|
| CAP (Ref # 11012)                      | 11012-1779  | 3        |
| BRACKET,PILOT BOX (Ref # 11047)        | 11047-1557  | 2        |
| COVER,PILOT BOX,UPP (Ref # 14090)      | 14090-1072  | 1        |
| COVER,PILOT BOX,LWR (Ref # 14090A)     | 14090-1073  | 1        |
| SOCKET-ASSY,TACHOMETER (Ref # 23008)   | 23008-1386  | 1        |
| SOCKET-ASSY,TEMP METER (Ref # 23008A)  | 23008-1388  | 1        |
| SOCKET-ASSY,SPEEDOMETER (Ref # 23008B) | 23008-1465  | 1        |
| SPEEDOMETER,KPH (Ref # 25005)          | 25005-1522  | 1        |
| SPEEDOMETER,MPH (Ref # 25005B)         | 25005-1545  | 1        |
| BRACKET-METER (Ref # 25008)            | 25008-1175  | 1        |
| TACHOMETER,X1000R/MIN (Ref # 25015)    | 25015-1316  | 1        |
| METER,TEMP (Ref # 28011)               | 28011-1129  | 1        |
| ELBOW (Ref # 52014)                    | 52014-1081  | 1        |
| SCREW,2X6,BLACK (Ref # 92009)          | 92009-1172  | 1        |
| SCREW,TAPPING,3X16 (Ref # 92009A)      | 92009-1391  | 2        |
| NUT,FLANGED,6MM (Ref # 92015)          | 92015-1233  | 2        |
| WASHER,4.3X12.5X1 (Ref # 92022)        | 92022-1949  | 8        |
| BULB,12V3W T-7 (Ref # 92069)           | 92069-1020  | 2        |
| BULB,12V 3W (Ref # 92069A)             | 92069-1068  | 7        |
| KNOB,METER (Ref # 92077)               | 92077-1073  | 1        |
| DAMPER,SPEEDOMETER (Ref # 92160)       | 92160-1064  | 1        |
| DAMPER (Ref # 92160A)                  | 92160-1068  | 6        |
| DAMPER,TACHO&TEMP METER (Ref # 92160B) | 92160-1274  | 1        |
| DAMPER,PILOT BOX (Ref # 92160C)        | 92160-1320  | 2        |
| SCREW-PAN-WS-CROS,4X6 (Ref # 223)      | 223C0406    | 2        |
| NUT-HEX (Ref # 311)                    | 311C0400    | 6        |