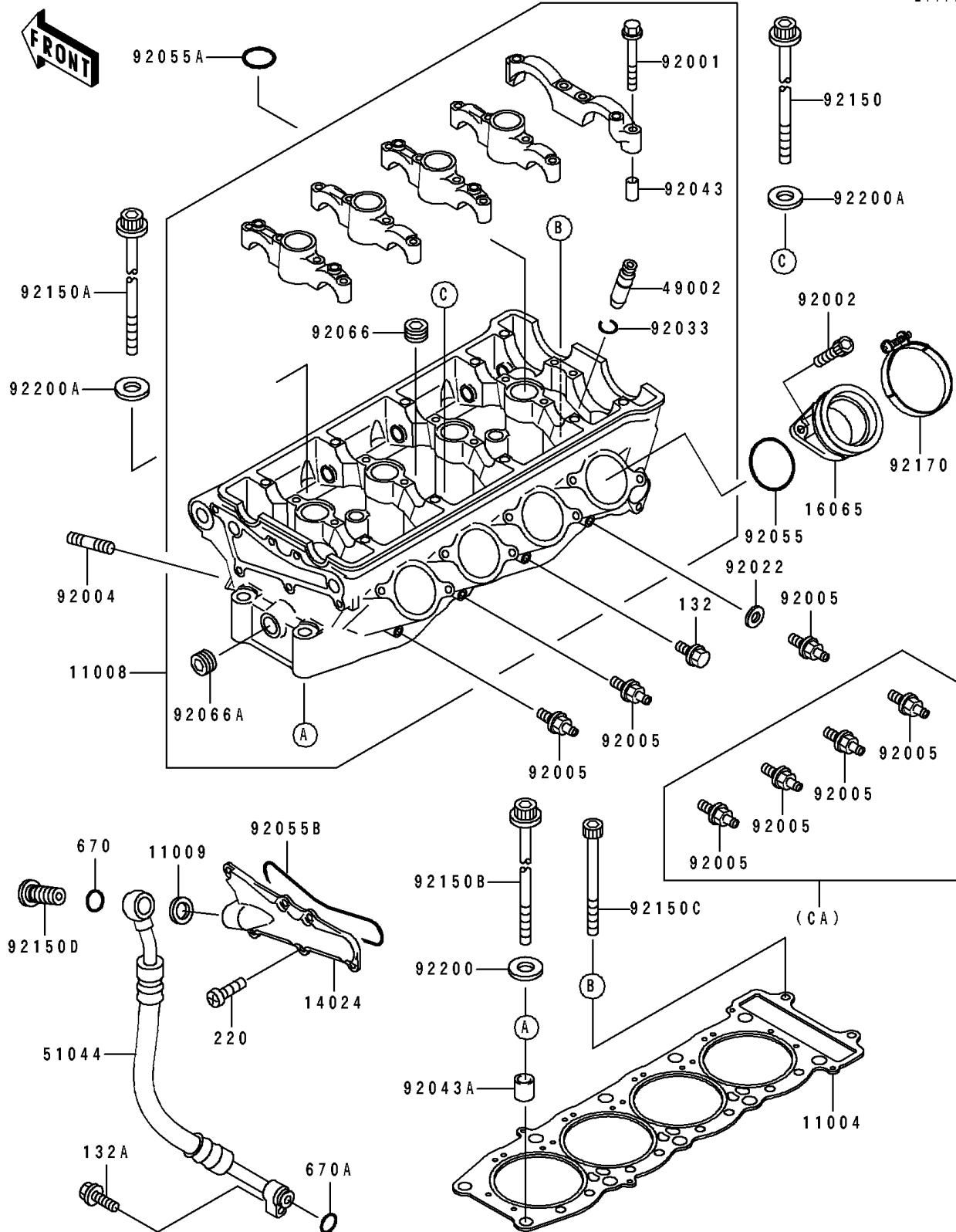


1993 Ninja® ZX™ -7R PARTS DIAGRAM

Cylinder Head

E1111



1993 Ninja® ZX™-7R PARTS LIST

Cylinder Head

| ITEM NAME | PART NUMBER | QUANTITY |
|--------------------------------------|-------------|----------|
| GASKET-HEAD,T=0.65,STD (Ref # 11004) | 11004-1223 | 1 |
| HEAD-COMP-CYLINDER (Ref # 11008) | 11008-1262 | 1 |
| GASKET,14X19.5X1.4 (Ref # 11009) | 11009-1461 | 1 |
| COVER,HEAD,LH (Ref # 14024) | 14024-1997 | 1 |
| HOLDER-CARBURETOR (Ref # 16065) | 16065-1277 | 4 |
| GUIDE-VALVE (Ref # 49002) | 49002-1116 | AR |
| TUBE-ASSY,OIL (Ref # 51044) | 51044-1135 | 1 |
| BOLT,FLANGED,6X38 (Ref # 92001) | 92001-1105 | 20 |
| BOLT,6X16 (Ref # 92002) | 92002-1143 | 8 |
| STUD,8X30 (Ref # 92004) | 92004-1121 | 8 |
| FITTING (Ref # 92005) | 92005-1221 | 4 |
| FITTING (Ref # 92005) | 92005-1221 | 3 |
| WASHER,6.2X11X1 (Ref # 92022) | 92022-304 | 4 |
| RING-SNAP (Ref # 92033) | 92033-1247 | 16 |
| PIN,6.2X8X14 (Ref # 92043) | 92043-1263 | 10 |
| PIN,10.1X12X14 (Ref # 92043A) | 92043-4009 | 2 |
| RING-O,43.7X1.9 (Ref # 92055) | 92055-1401 | 4 |
| RING-O,25.5X2 (Ref # 92055A) | 92055-1403 | 4 |
| RING-O (Ref # 92055B) | 92055-1490 | 1 |
| PLUG (Ref # 92066) | 92066-1253 | 4 |
| PLUG (Ref # 92066A) | 92066-1262 | 1 |
| BOLT,10X173 (Ref # 92150) | 92150-1460 | 4 |
| BOLT,10X155 (Ref # 92150A) | 92150-1461 | 4 |
| BOLT,10X137 (Ref # 92150B) | 92150-1462 | 2 |
| BOLT,6X100 (Ref # 92150C) | 92150-1463 | 2 |
| BOLT,HEAD,14MM (Ref # 92150D) | 92150-1543 | 1 |
| CLAMP (Ref # 92170) | 92170-1161 | 4 |
| WASHER,10.5X19X2.3 (Ref # 92200) | 92200-1042 | 2 |
| WASHER,10.5X20X4.5 (Ref # 92200A) | 92200-1086 | 8 |

1993 Ninja® ZX™ -7R PARTS LIST

Cylinder Head

| ITEM NAME | PART NUMBER | QUANTITY |
|---------------------------------|-------------|----------|
| BOLT-FLANGED-SMALL (Ref # 132) | 132G0610 | 1 |
| BOLT-FLANGED-SMALL (Ref # 132A) | 132J0625 | 1 |
| SCREW-PAN-CROS,6X14 (Ref # 220) | 220B0614 | 6 |
| O RING,15MM (Ref # 670) | 670B2015 | 1 |
| O RING (Ref # 670A) | 670D2010 | 1 |