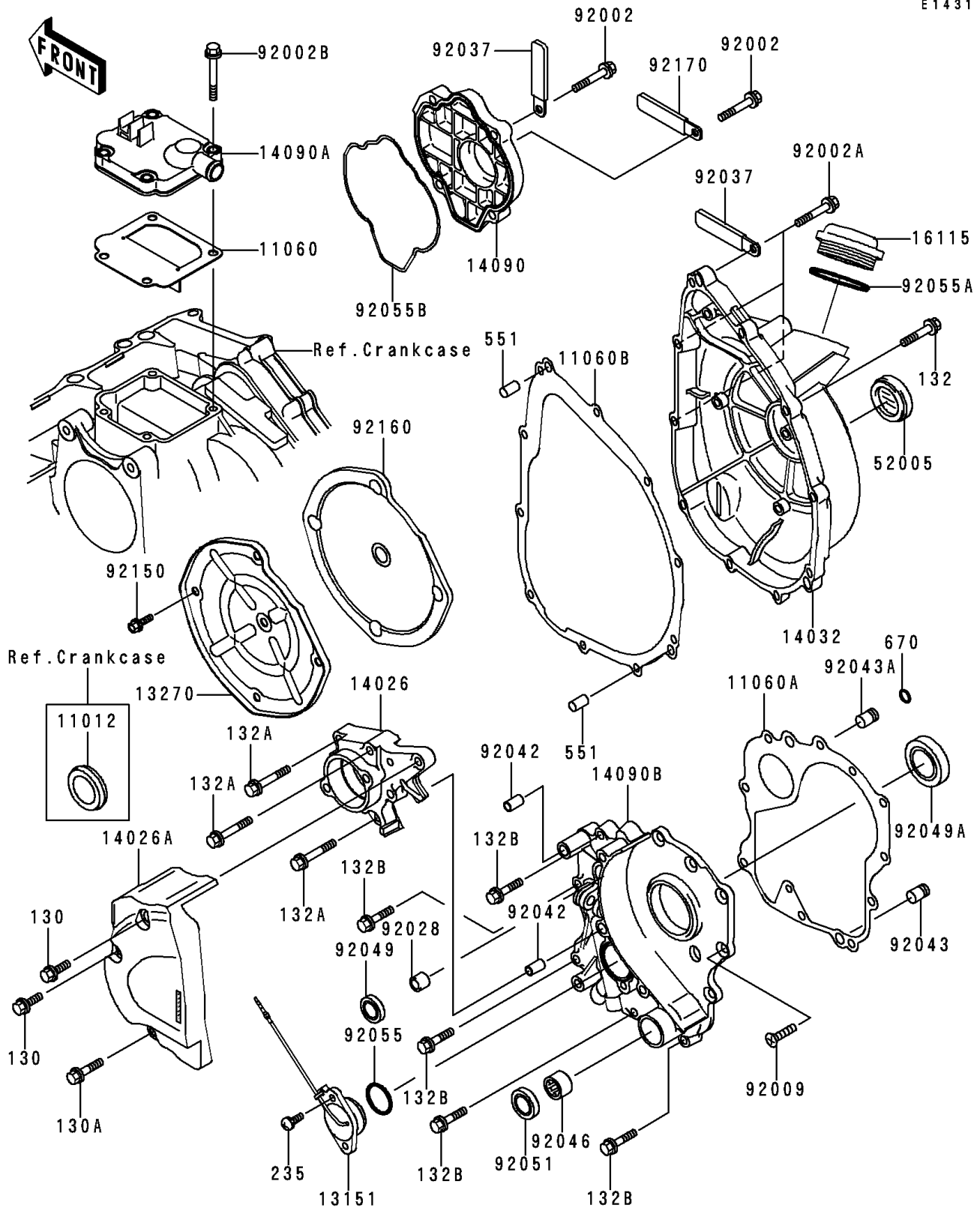


# 1996 Ninja® ZX™-7RR PARTS DIAGRAM

Engine Cover(s)

E1431



# 1996 Ninja® ZX™-7RR PARTS LIST

## Engine Cover(s)

ITEM NAME	PART NUMBER	QUANTITY
BOLT-FLANGED,6X16,BLACK (Ref # 130)	130J0616	2
BOLT-FLANGED,6X25 (Ref # 130A)	130J0625	1
BOLT-FLANGED-SMALL (Ref # 132)	132J0625	7
BOLT-FLANGED-SMALL (Ref # 132A)	132J0635	3
BOLT-FLANGED-SMALL (Ref # 132B)	132Y0625	5
SCREW-PAN-WP-CROS (Ref # 235)	235C0516	2
PIN-DOWEL,8X14 (Ref # 551)	551A0814	2
O RING,5MM (Ref # 670)	670B1505	1
CAP,LH (Ref # 11012)	11012-1770	1
GASKET,BREATHER COVER (Ref # 11060)	11060-1702	1
GASKET,TRANSMISSION COVER (Ref # 11060A)	11060-1703	1
GASKET,CLUTCH COVER (Ref # 11060B)	11060-1704	1
SWITCH-COMP (Ref # 13151)	13151-1081	1
PLATE,CLUTCH COVER (Ref # 13270)	13270-1580	1
COVER-CHAIN,FR (Ref # 14026)	14026-1228	1
COVER-CHAIN,RR (Ref # 14026A)	14026-1229	1
COVER-CLUTCH (Ref # 14032)	14032-1427	1
COVER,PULSING (Ref # 14090)	14090-1630	1
COVER,BREATHER (Ref # 14090A)	14090-1631	1
COVER,TRANSMISSION (Ref # 14090B)	14090-1632	1
CAP-OIL FILLER (Ref # 16115)	16115-1064	1
GAUGE,OIL LEVEL (Ref # 52005)	52005-1057	1
BOLT,6X20 (Ref # 92002)	92002-1343	4
BOLT,6X30 (Ref # 92002A)	92002-1534	3
BOLT,6X25 (Ref # 92002B)	92002-1582	4
SCREW,6X16 (Ref # 92009)	92009-1360	5
BUSHING,8X12X10 (Ref # 92028)	92028-1750	1
CLAMP,WIRING HARNESS (Ref # 92037)	92037-1877	2
PIN,DOWEL,6.3X8X14 (Ref # 92042)	92042-007	2

## 1996 Ninja® ZX™-7RR PARTS LIST

### Engine Cover(s)

ITEM NAME	PART NUMBER	QUANTITY
PIN,6.2X8X14 (Ref # 92043)	92043-1263	1
PIN (Ref # 92043A)	92043-1456	1
BEARING-NEEDLE,HK1312 (Ref # 92046)	92046-1148	1
SEAL-OIL,SD-8187 (Ref # 92049)	92049-1017	1
SEAL-OIL,TC32488 (Ref # 92049A)	92049-1361	1
SEAL-OIL,TB13225.5 (Ref # 92051)	92051-005	1
RING-O (Ref # 92055)	92055-091	1
RING-O,38MM (Ref # 92055A)	92055-1295	1
RING-O,PULSING COVER (Ref # 92055B)	92055-1543	1
BOLT,5X8 (Ref # 92150)	92150-1406	5
DAMPER,CLUTCH COVER (Ref # 92160)	92160-1702	1
CLAMP (Ref # 92170)	92170-1514	1