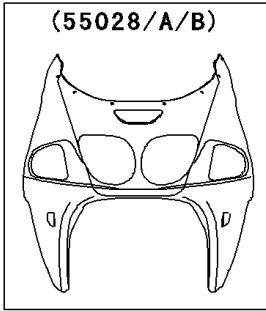
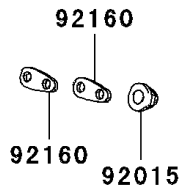
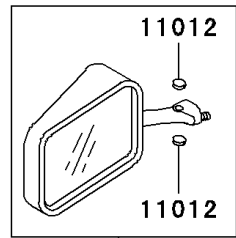
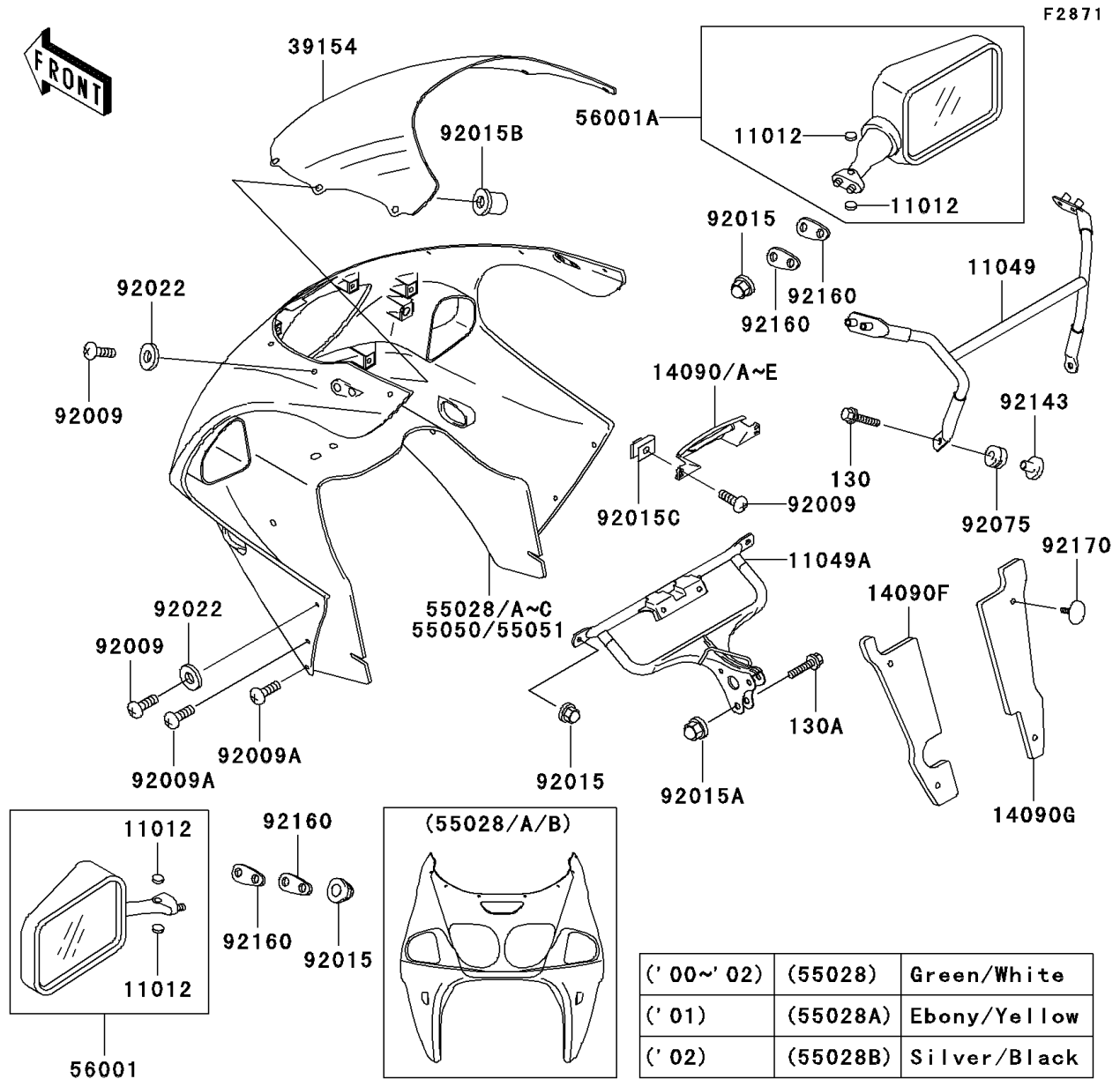
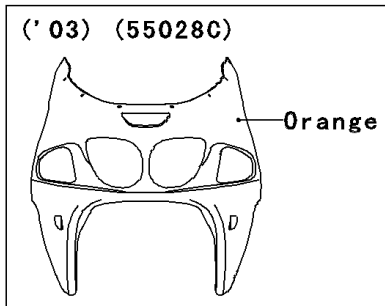
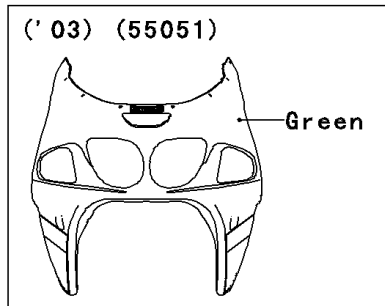
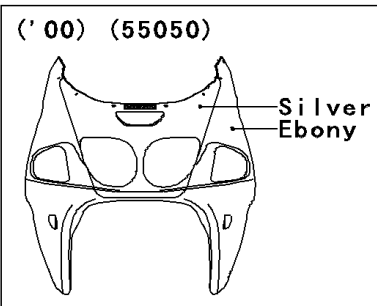


2000 Ninja® ZX™-7R PARTS DIAGRAM

Cowling



| | | |
|-------------|----------|--------------|
| (' 00~' 02) | (55028) | Green/White |
| (' 01) | (55028A) | Ebony/Yellow |
| (' 02) | (55028B) | Silver/Black |



WD

WD

WOD

2000 Ninja® ZX™-7R PARTS LIST

Cowling

| ITEM NAME | PART NUMBER | QUANTITY |
|--|---------------|----------|
| BOLT-FLANGED,6X25 (Ref # 130) | 130J0625 | 2 |
| BOLT-FLANGED,8X30 (Ref # 130A) | 130J0830 | 2 |
| CAP,MIRROR (Ref # 11012) | 11012-1818 | 4 |
| BRACKET,MIRROR (Ref # 11049) | 11049-1327 | 1 |
| BRACKET,UPP COWLING (Ref # 11049A) | 11049-1328 | 1 |
| COVER,POSITION LAMP,G.SILVER (Ref # 14090A) | 14090-1404-F2 | 1 |
| COVER,POSITION LAMP,WHITE (Ref # 14090C) | 14090-1404-R1 | 1 |
| COVER,HEAT GUARD,LH (Ref # 14090F) | 14090-1649 | 1 |
| COVER,HEAT GUARD,RH (Ref # 14090G) | 14090-1650 | 1 |
| WINDSHIELD (Ref # 39154) | 39154-1132 | 1 |
| COWLING,UPP,GREEN/WHITE (Ref # 55028) | 55028-1343-CK | 1 |
| COWLING-ASSY.,UPP,EBONY/SILVER (Ref # 55050) | 55050-5321-5F | 1 |
| MIRROR-ASSY,LH,EBONY (Ref # 56001) | 56001-1376-6C | 1 |
| MIRROR-ASSY,RH,EBONY (Ref # 56001A) | 56001-1377-6C | 1 |
| SCREW,5X16,BLACK (Ref # 92009) | 92009-1654 | 12 |
| SCREW,5X20,BLACK (Ref # 92009A) | 92009-1656 | 4 |
| NUT,CAP,6MM,BLACK (Ref # 92015) | 92015-1170 | 6 |
| NUT,CAP,8MM,BLACK (Ref # 92015A) | 92015-1174 | 2 |
| NUT,WELL,5MM (Ref # 92015B) | 92015-1757 | 8 |
| NUT,5MM (Ref # 92015C) | 92015-1798 | 2 |
| WASHER,NYLON,5.3X11.5X1.5 (Ref # 92022) | 92022-1521 | 10 |
| DAMPER,RUBBER (Ref # 92075) | 92075-1123 | 2 |
| COLLAR (Ref # 92143) | 92143-1353 | 2 |
| DAMPER,MIRROR (Ref # 92160) | 92160-1089 | 4 |
| CLAMP (Ref # 92170) | 92170-1442 | 4 |