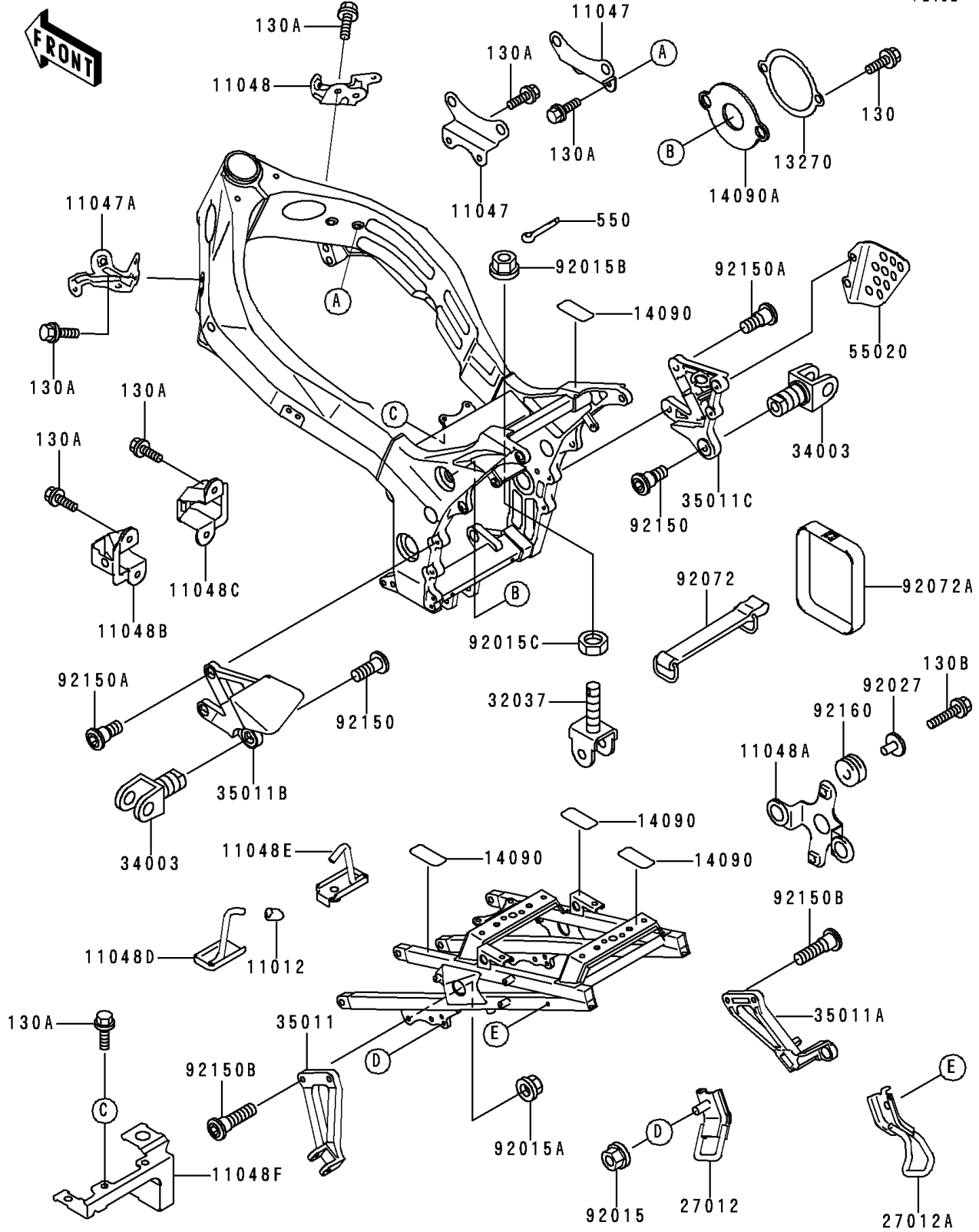


1994 Ninja® ZX™ -9R PARTS DIAGRAM

Battery Case

F2132



1994 Ninja® ZX™ -9R PARTS LIST

Battery Case

| ITEM NAME | PART NUMBER | QUANTITY |
|---|---------------|----------|
| BOLT-FLANGED (Ref # 130) | 130J0610 | 2 |
| BOLT-FLANGED,6X16,BLACK (Ref # 130A) | 130J0616 | 14 |
| BOLT-FLANGED,6X25 (Ref # 130B) | 130J0625 | 2 |
| PIN-COTTER,4.0X25 (Ref # 550) | 550D4025 | 1 |
| CAP,BUNGEE CORD HOOK (Ref # 11012) | 11012-1589 | 2 |
| BRACKET,IGNITION COIL (Ref # 11047) | 11047-1345 | 2 |
| BRACKET,RADIATOR,LH (Ref # 11047A) | 11047-1853 | 1 |
| BRACKET,RADIATOR,RH (Ref # 11048) | 11048-1357 | 1 |
| BRACKET,IGNITER (Ref # 11048A) | 11048-1683 | 1 |
| BRACKET,LWR COWLING,LH (Ref # 11048B) | 11048-1777 | 1 |
| BRACKET,LWR COWLING,RH (Ref # 11048C) | 11048-1780 | 1 |
| BRACKET,HELMET HOOK,LH (Ref # 11048D) | 11048-1793 | 1 |
| BRACKET,HELMET HOOK,RH (Ref # 11048E) | 11048-1795 | 1 |
| BRACKET,FUEL PUMP&FILTER (Ref # 11048F) | 11048-1796 | 1 |
| PLATE,FUEL TAP KNOB (Ref # 13270) | 13270-1171 | 1 |
| COVER (Ref # 14090) | 14090-1297 | 8 |
| COVER,FUEL TAP KNOB (Ref # 14090A) | 14090-1410 | 1 |
| HOOK,BUNGEE CORD,FR (Ref # 27012) | 27012-1474 | 2 |
| HOOK,BUNGEE CORD,RR (Ref # 27012A) | 27012-1475 | 2 |
| BRACKET-SHOCKABSORBER (Ref # 32037) | 32037-1657 | 1 |
| HOLDER-STEP (Ref # 34003) | 34003-1327 | 2 |
| STAY,RR,LH,G.GRAY (Ref # 35011) | 35011-1667-GD | 1 |
| STAY,RR,RH,G.GRAY (Ref # 35011A) | 35011-1668-GD | 1 |
| STAY,FR,LH,G.GRAY (Ref # 35011B) | 35011-1699-GD | 1 |
| STAY,FR,RH,G.GRAY (Ref # 35011C) | 35011-1700-GD | 1 |
| GUARD,RR MASTER CYLINDER (Ref # 55020) | 55020-1502 | 1 |
| NUT,FLANGED,6MM (Ref # 92015) | 92015-1367 | 2 |
| NUT,FLANGED,8MM (Ref # 92015A) | 92015-1406 | 4 |
| NUT,FLANGED,16MM (Ref # 92015B) | 92015-1881 | 1 |

1994 Ninja® ZX™-9R PARTS LIST

Battery Case

| ITEM NAME | PART NUMBER | QUANTITY |
|-----------------------------------|-------------|----------|
| NUT,16MM (Ref # 92015C) | 92015-1953 | 1 |
| COLLAR,L=14.1 (Ref # 92027) | 92027-1920 | 2 |
| BAND,BATTERY (Ref # 92072) | 92072-1306 | 1 |
| BAND,BATTERY,L=450 (Ref # 92072A) | 92072-1309 | 1 |
| BOLT,SOCKET,10X25 (Ref # 92150) | 92150-1268 | 2 |
| BOLT,SOCKET,8X20 (Ref # 92150A) | 92150-1839 | 4 |
| BOLT,SOCKET,8X30 (Ref # 92150B) | 92150-1843 | 4 |
| DAMPER (Ref # 92160) | 92160-1162 | 2 |