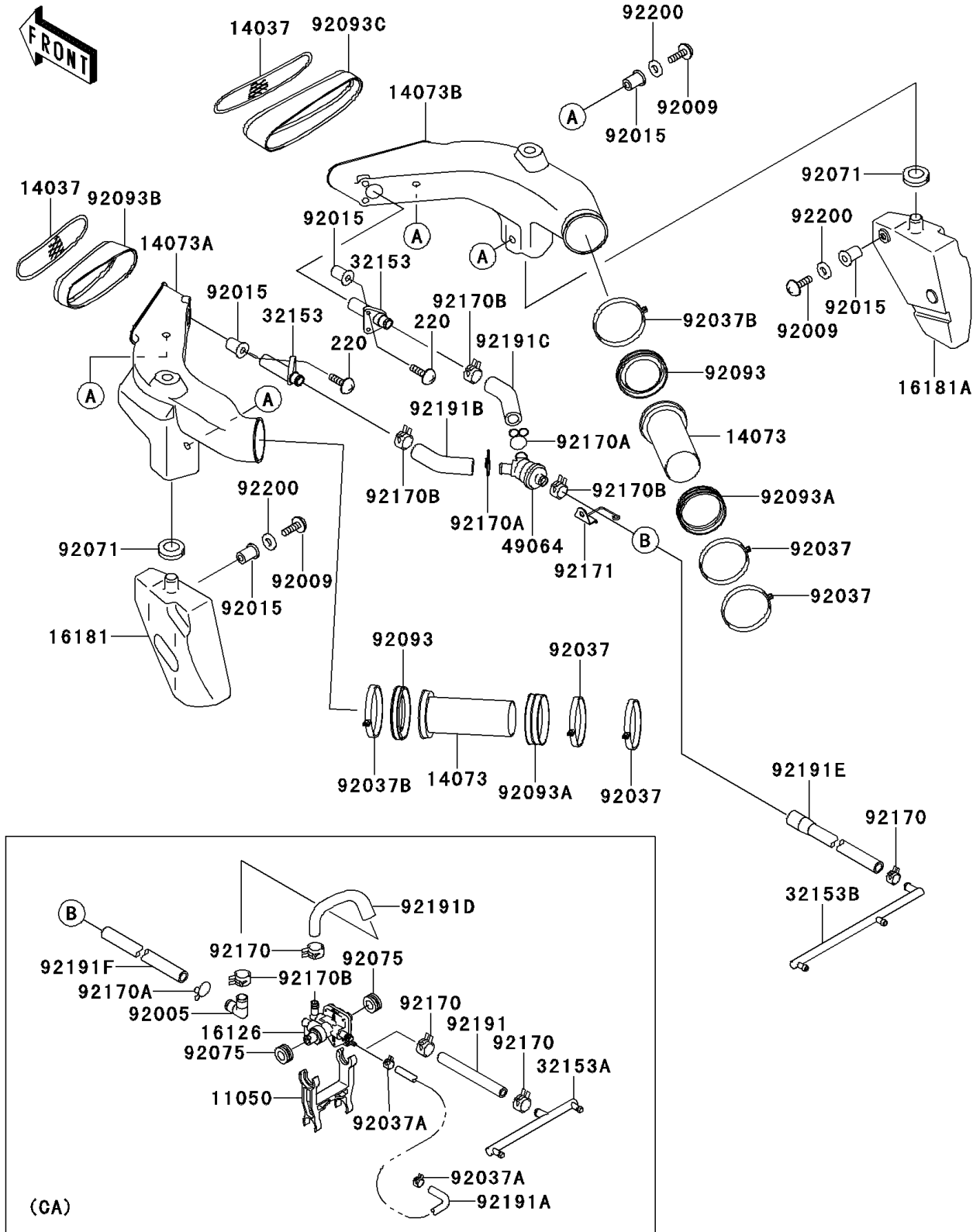


# 2000 Ninja® ZX™-9R PARTS DIAGRAM

Air Duct

E1131



## 2000 Ninja® ZX™-9R PARTS LIST

### Air Duct

ITEM NAME	PART NUMBER	QUANTITY
SCREEN,AIR DUCT (Ref # 14037)	14037-1267	2
DUCT,AIR FILTER (Ref # 14073)	14073-1706	2
DUCT,LH (Ref # 14073A)	14073-1760	1
DUCT,RH (Ref # 14073B)	14073-1761	1
TANK-RESONATOR,LH (Ref # 16181)	16181-1089	1
TANK-RESONATOR,RH (Ref # 16181A)	16181-1090	1
PIPE,AIR VENT (Ref # 32153)	32153-1103	2
FILTER-AIR (Ref # 49064)	49064-1061	1
SCREW,5X16 (Ref # 92009)	92009-1909	6
NUT,WELL,5MM (Ref # 92015)	92015-1757	10
CLAMP,AIR FILTER,ID=76,BLACK (Ref # 92037)	92037-129	4
CLAMP (Ref # 92037B)	92037-1654	2
GROMMET,AIR FILTER (Ref # 92071)	92071-1042	2
SEAL,AIR FILTER DUCT (Ref # 92093)	92093-1456	2
SEAL (Ref # 92093A)	92093-1470	2
SEAL,AIR DUCT,LH (Ref # 92093B)	92093-1514	1
SEAL,AIR DUCT,RH (Ref # 92093C)	92093-1515	1
CLAMP (Ref # 92171)	92171-1241	1
SCREW-PAN-CROSS (Ref # 220)	220D0520	4
TUBE (Ref # 92191B)	92191-1476	1
TUBE (Ref # 92191C)	92191-1477	1
WASHER,NYLON,5.3X11.5X0.5 (Ref # 92200)	92200-1480	6
BRACKET (Ref # 11050)	11050-1509	1
VALVE (Ref # 16126)	16126-1288	1
PIPE,3WAY (Ref # 32153A)	32153-1104	1
PIPE (Ref # 32153B)	32153-1321	1
FITTING (Ref # 92005)	92005-1309	1
CLAMP,TUBE (Ref # 92037A)	92037-1461	2
DAMPER,MUFFLER (Ref # 92075)	92075-1621	2

## 2000 Ninja® ZX™-9R PARTS LIST

### Air Duct

ITEM NAME	PART NUMBER	QUANTITY
CLAMP (Ref # 92170)	92170-1118	1
CLAMP (Ref # 92170)	92170-1118	3
CLAMP (Ref # 92170A)	92170-1486	2
CLAMP (Ref # 92170A)	92170-1486	3
CLAMP (Ref # 92170B)	92170-1909	3
CLAMP (Ref # 92170B)	92170-1909	4
TUBE (Ref # 92191)	92191-1191	1
TUBE (Ref # 92191A)	92191-1192	1
TUBE (Ref # 92191D)	92191-1482	1
TUBE (Ref # 92191E)	92191-1519	1
TUBE (Ref # 92191F)	92191-1520	1