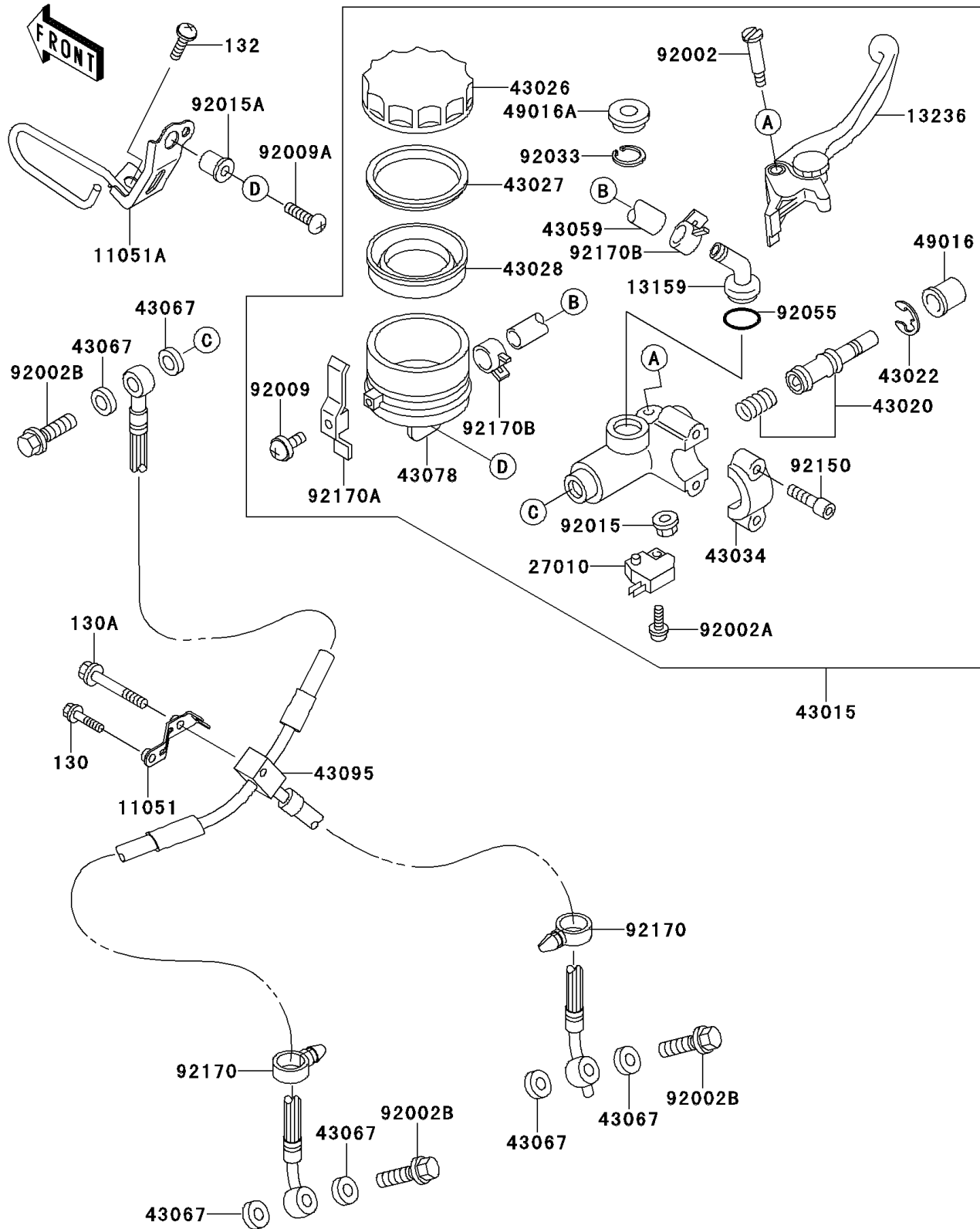


2000 Ninja® ZX™-9R PARTS DIAGRAM

Front Master Cylinder

F2291



2000 Ninja® ZX™-9R PARTS LIST

Front Master Cylinder

ITEM NAME	PART NUMBER	QUANTITY
BOLT-FLANGED,6X14,BLACK (Ref # 130)	130J0614	1
BOLT-FLANGED,6X35 (Ref # 130A)	130J0635	1
BOLT-FLANGED-SMALL,6X10 (Ref # 132)	132J0610	1
BRACKET,BRAKE HOSE (Ref # 11051)	11051-1806	1
BRACKET,RESERVOIR TANK (Ref # 11051A)	11051-1816	1
CONNECTOR (Ref # 13159)	13159-1061	1
LEVER-COMP,FRONT BRAKE (Ref # 13236)	13236-1326	1
SWITCH,BRAKE (Ref # 27010)	27010-1170	1
CYLINDER-ASSY-MASTER,FR (Ref # 43015)	43015-1633	1
PISTON-COMP-BRAKE,FR (Ref # 43020)	43020-1054	1
STOPPER-BRAKE,PISTON (Ref # 43022)	43022-1010	1
CAP-BRAKE (Ref # 43026)	43026-1051	1
PLATE-DIAPHRAGM (Ref # 43027)	43027-1051	1
DIAPHRAGM,MASTER CYLINDER (Ref # 43028)	43028-1057	1
HOLDER-BRAKE,MASTER CYLINDER (Ref # 43034)	43034-1016	1
HOSE-BRAKE,FR MASTER CYLINDER (Ref # 43059)	43059-1696	1
WASHER,10.5X15X1.5 (Ref # 43067)	43067-001	6
RESERVOIR (Ref # 43078)	43078-1099	1
HOSE-BRAKE,FR (Ref # 43095)	43095-1162	1
COVER-SEAL,MASTER CYLINDER (Ref # 49016)	49016-1044	1
COVER-SEAL (Ref # 49016A)	49016-1147	1
BOLT,LEVER SET,BLACK (Ref # 92002)	92002-1322	1
BOLT,SCREW,4X12 (Ref # 92002A)	92002-1323	1
BOLT,OIL,L=23 (Ref # 92002B)	92002-1888	3
SCREW (Ref # 92009)	92009-1570	1
SCREW,5X18 (Ref # 92009A)	92009-1655	1
NUT,FLANGED,6MM,BLACK (Ref # 92015)	92015-1233	1
NUT,WELL,5MM (Ref # 92015A)	92015-1757	1
RING-SNAP,20.5MM (Ref # 92033)	92033-1186	1

2000 Ninja® ZX™-9R PARTS LIST

Front Master Cylinder

ITEM NAME	PART NUMBER	QUANTITY
RING-O,MASTER CYLINDER (Ref # 92055)	92055-1251	1
BOLT (Ref # 92150)	92150-1328	2
CLAMP (Ref # 92170)	92170-1067	2
CLAMP (Ref # 92170A)	92170-1090	1
CLAMP,HOSE (Ref # 92170B)	92170-1091	2