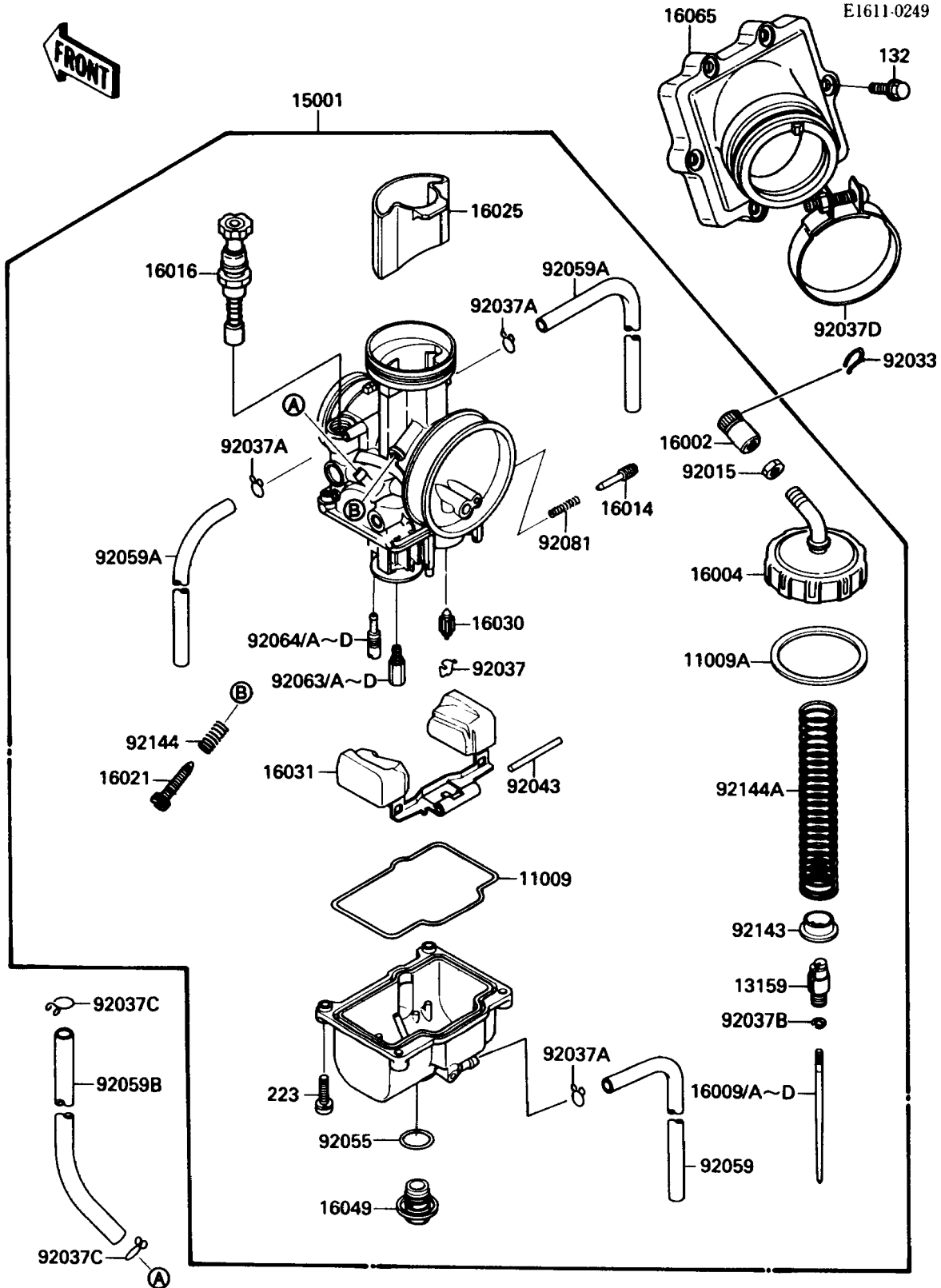


1988 Tecate 4 PARTS DIAGRAM

Carburetor(KXF250-A2)(?004204)



1988 Tecate 4 PARTS LIST

Carburetor(KXF250-A2)(?004204)

ITEM NAME	PART NUMBER	QUANTITY
GASKET,FLOAT CHAMBER (Ref # 11009)	11009-1716	1
GASKET,CHAMBER CAP (Ref # 11009A)	11009-1717	1
CONNECTOR,THROTTLE CABLE (Ref # 13159)	13159-1060	1
CARBURETOR-ASSY (Ref # 15001)	15001-1408	1
ADJUSTER-CABLE (Ref # 16002)	16002-1057	1
CAP-CHAMBER (Ref # 16004)	16004-1063	1
NEEDLE-JET,R1470J (Ref # 16009)	16009-1427	1
NEEDLE-JET,R1471J (Ref # 16009A)	16009-1428	1
NEEDLE-JET,R1472J (Ref # 16009B)	16009-1429	1
NEEDLE-JET,R1473J (Ref # 16009C)	16009-1430	1
NEEDLE-JET,R1474J (Ref # 16009D)	16009-1469	1
SCREW-PILOT AIR (Ref # 16014)	16014-1059	1
PLUNGER,STARTER (Ref # 16016)	16016-1075	1
SCREW-THROTTLE STOP (Ref # 16021)	16021-1124	1
VALVE-THROTTLE,CA6 (Ref # 16025)	16025-1148	1
VALVE-FLOAT (Ref # 16030)	16030-1057	1
FLOAT (Ref # 16031)	16031-1067	1
COVER-MAIN JET (Ref # 16049)	16049-1051	1
HOLDER-CARBURETOR (Ref # 16065)	16065-1170	1
NUT,CABLE ADJUST LOCK (Ref # 92015)	92015-1574	1
RING-SNAP (Ref # 92033)	92036-018	1
CLAMP,FLOAT VALVE (Ref # 92037)	16044-007	1
CLAMP,TUBE (Ref # 92037A)	92037-1396	3
CLAMP,JET NEEDLE (Ref # 92037B)	92037-1401	1
CLAMP,TUBE (Ref # 92037C)	92037-147	2
CLAMP,55MM (Ref # 92037D)	92037-1486	1
PIN,FLOAT (Ref # 92043)	92043-1207	1
RING-O,MAIN JET COVER (Ref # 92055)	92055-1167	1
TUBE,3.5X6.5X330 (Ref # 92059)	92059-1897	1

1988 Tecate 4 PARTS LIST

Carburetor(KXF250-A2)(?004204)

ITEM NAME	PART NUMBER	QUANTITY
TUBE,4X7X270 (Ref # 92059A)	92059-1950	2
TUBE,2.5X5.8X270 (Ref # 92059B)	92059-3731	1
JET-MAIN,#135 (Ref # 92063)	92063-1338	1
JET-MAIN,#138 (Ref # 92063A)	92063-1359	1
JET-MAIN,#140 (Ref # 92063B)	92063-1360	1
JET-MAIN,#142 (Ref # 92063C)	92063-1361	1
JET-MAIN,#145 (Ref # 92063D)	92063-1362	1
JET-PILOT,#60 (Ref # 92064)	92064-1147	1
JET-PILOT,#62 (Ref # 92064A)	92064-1148	1
JET-PILOT,#65 (Ref # 92064B)	92064-1149	1
JET-PILOT,#68 (Ref # 92064C)	92064-1150	1
JET-PILOT,#70 (Ref # 92064D)	92064-1151	1
SPRING,ADJUST SCREW (Ref # 92081)	92081-1555	1
COLLAR,THROTTLE VALVE (Ref # 92143)	92143-1201	1
SPRING,THROTTLE STOP SCREW (Ref # 92144)	92144-1257	1
SPRING,THROTTLE VALVE (Ref # 92144A)	92144-1284	1
BOLT-FLANGED-SMALL (Ref # 132)	132G0620	6
SCREW-PAN-WS-CROS (Ref # 223)	223C0416	4