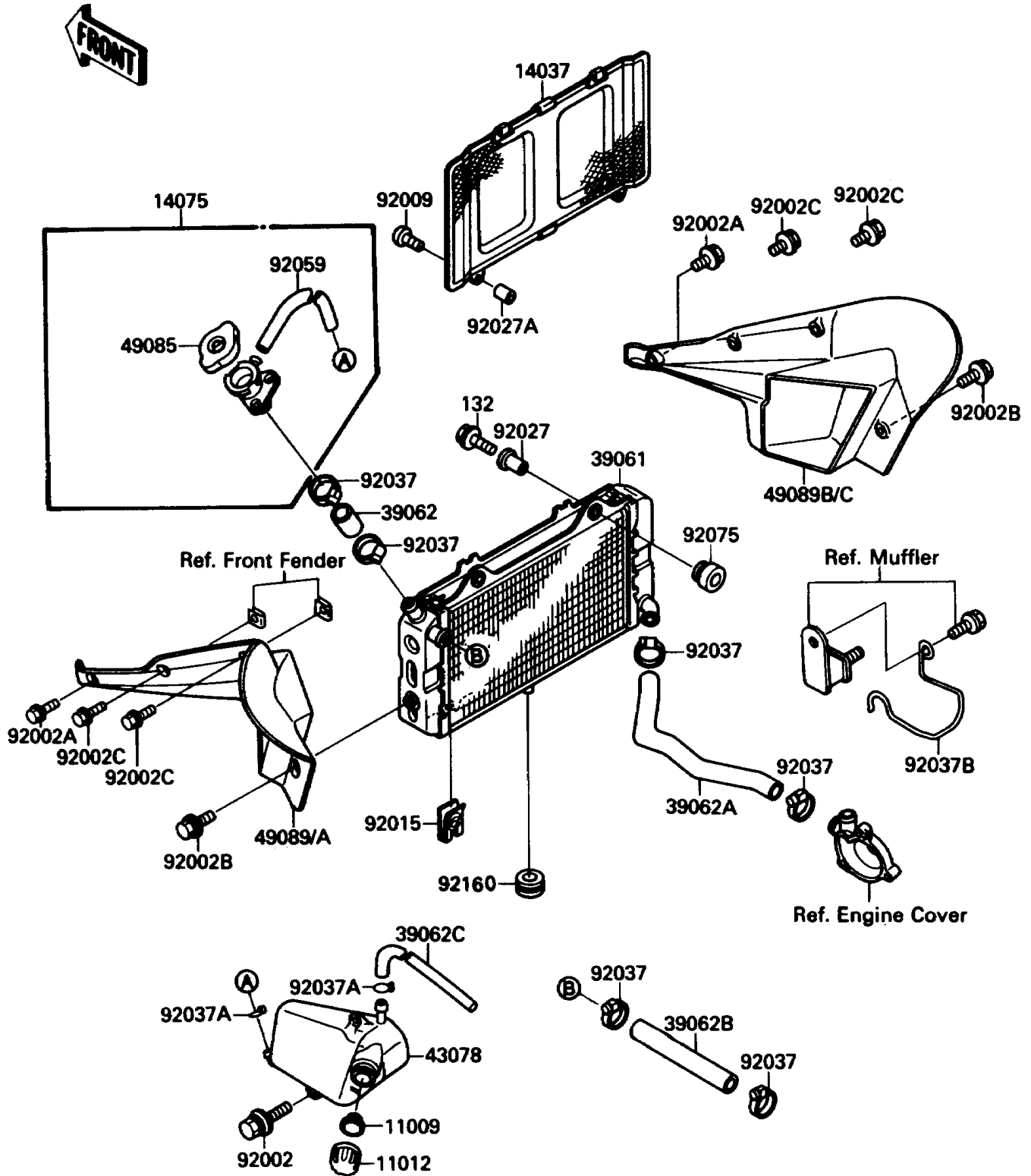


# 1988 Tecate 4 PARTS DIAGRAM

Radiator

E3032-0062



# 1988 Tecate 4 PARTS LIST

## Radiator

ITEM NAME	PART NUMBER	QUANTITY
GASKET,RESERVOIR TANK CAP (Ref # 11009)	11009-1145	1
CAP (Ref # 11012)	11012-1084	1
SCREEN (Ref # 14037)	14037-1096	1
CAP-ASSY,RADIATOR (Ref # 14075)	14075-1071	1
RADIATOR-ASSY (Ref # 39061)	39061-1105	1
HOSE-COOLING (Ref # 39062)	39062-1015	1
HOSE-COOLING,PUMP-RADIATOR (Ref # 39062A)	39062-1232	1
HOSE-COOLING,HEAD-RADIATOR (Ref # 39062B)	39062-1234	1
HOSE-COOLING,5X9X950 (Ref # 39062C)	39062-1254	1
RESERVOIR (Ref # 43078)	43078-1087	1
CAP-ASSY-PRESSURE (Ref # 49085)	49085-1003	1
SHROUD-ENGINE,LH,P.WHITE (Ref # 49089)	49089-1075-6F	1
SHROUD-ENGINE,LH,L.GREEN (Ref # 49089A)	49089-1075-6W	1
SHROUD-ENGINE,RH,P.WHITE (Ref # 49089B)	49089-1076-6F	1
SHROUD-ENGINE,RH,L.GREEN (Ref # 49089C)	49089-1076-6W	1
BOLT,6X14 (Ref # 92002)	92002-1460	2
BOLT,6X25 (Ref # 92002A)	92002-1462	2
BOLT,L=12 (Ref # 92002B)	92002-1662	2
BOLT,6X18 (Ref # 92002C)	92002-1952	4
SCREW,TAPPING,6X20 (Ref # 92009)	92009-1422	2
NUT,6MM (Ref # 92015)	92015-1758	2
COLLAR (Ref # 92027)	92027-1183	2
COLLAR,6.8X10X10.5 (Ref # 92027A)	92027-120	2
CLAMP,COOLING HOSE (Ref # 92037)	92037-1589	6
CLAMP (Ref # 92037A)	92037-1712	2
CLAMP,COOLING HOSE GUIDE (Ref # 92037B)	92037-1953	1
TUBE (Ref # 92059)	92059-1794	1
DAMPER (Ref # 92075)	92075-1352	2
DAMPER (Ref # 92160)	92160-1007	1

# 1988 Tecate 4 PARTS LIST

Radiator

ITEM NAME	PART NUMBER	QUANTITY
BOLT-FLANGED-SMALL (Ref # 132)	132G0625	2