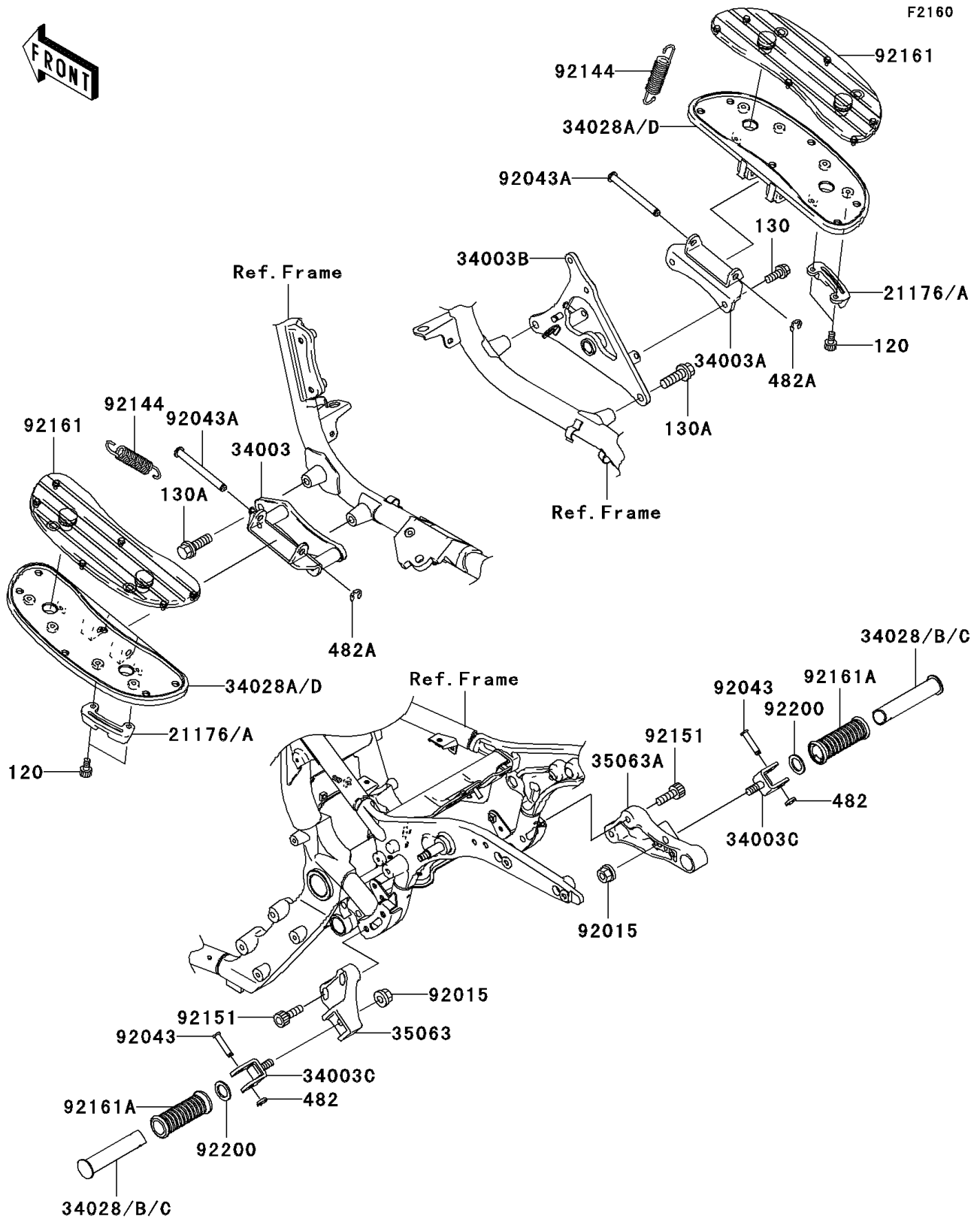


2005 Vulcan 1600 Classic PARTS DIAGRAM

Footrests



2005 Vulcan 1600 Classic PARTS LIST

Footrests

ITEM NAME	PART NUMBER	QUANTITY
BOLT-SOCKET,M6X16 (Ref # 120)	120S0616	4
BOLT-FLANGED,8X20 (Ref # 130)	130J0820	2
BOLT-FLANGED,10X30 (Ref # 130A)	130J1030	4
CIRCLIP-TYPE-E (Ref # 482)	482L7000	2
CIRCLIP-TYPE-E,8MM (Ref # 482A)	482L8000	2
SENSOR,BANK (Ref # 21176)	21176-0021	2
HOLDER-STEP,FR,LH (Ref # 34003)	34003-0012	1
HOLDER-STEP,FR,RH (Ref # 34003A)	34003-0013	1
HOLDER-STEP,FR,RH (Ref # 34003B)	34003-0014	1
HOLDER-STEP,RR (Ref # 34003C)	34003-0015	2
STEP,FR (Ref # 34028A)	34028-0011	2
STEP,RR (Ref # 34028B)	34028-0017	2
STAY,REAR STEP,LH (Ref # 35063)	35063-1268	1
STAY,REAR STEP,RH (Ref # 35063A)	35063-1269	1
NUT,FLANGED,10MM (Ref # 92015)	92015-1428	2
PIN,8X36.5 (Ref # 92043)	92043-1339	2
PIN,10X98.5 (Ref # 92043A)	92043-1707	2
SPRING (Ref # 92144)	92144-1266	2
BOLT,SOCKET,8X25 (Ref # 92151)	92151-1525	4
DAMPER,FRONT STEP (Ref # 92161)	92161-1325	2
DAMPER,STEP (Ref # 92161A)	92161-1339	2
WASHER,22.5X33X2.3 (Ref # 92200)	92200-1482	2