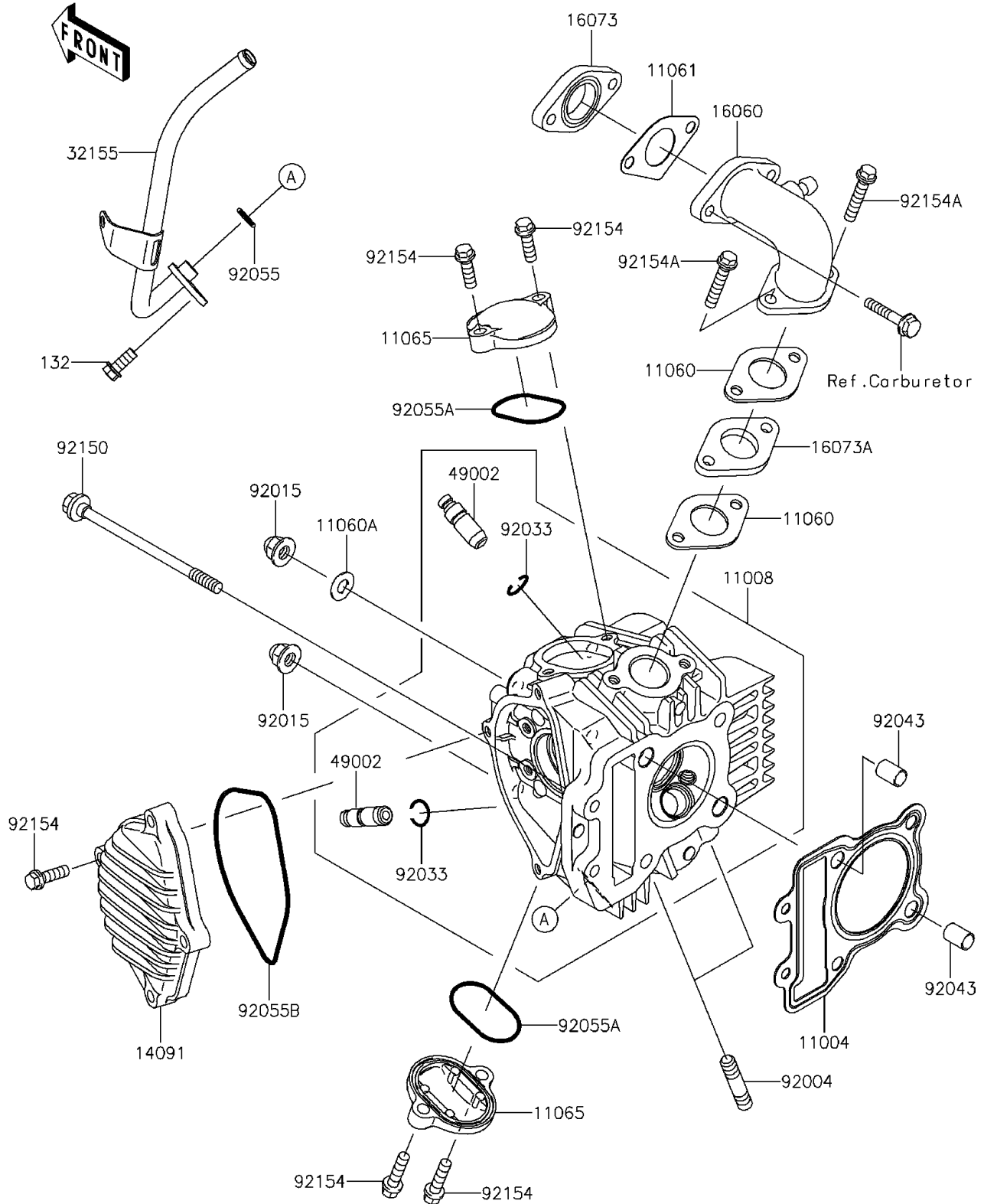


# 2013 KAZE HIT PARTS DIAGRAM

Cylinder Head

E1111



## 2013 KAZE HIT PARTS LIST

### Cylinder Head

ITEM NAME	PART NUMBER	QUANTITY
BOLT-FLANGED-SMALL,6X14 (Ref # 132)	132BA0614	1
GASKET-HEAD (Ref # 11004)	11004-0056	1
HEAD-COMP-CYLINDER (Ref # 11008)	11008-0729	1
GASKET,INTAKE PIPE (Ref # 11060)	11060-1753	2
GASKET (Ref # 11060A)	11060-1862	1
GASKET,PIPE-CARBURETOR (Ref # 11061)	11061-0845	1
CAP,VALVE,ADJUSTING (Ref # 11065)	11065-0800	2
COVER (Ref # 14091)	14091-0872	1
PIPE-INTAKE (Ref # 16060)	16060-1079	1
INSULATOR,CARBURETOR (Ref # 16073)	16073-1102	1
INSULATOR,HEAD (Ref # 16073A)	16073-1108	1
PIPE (Ref # 32155)	32155-1105	1
GUIDE-VALVE (Ref # 49002)	49002-1130	2
STUD,8X28.5 (Ref # 92004)	92004-1284	2
NUT,CAP,8MM (Ref # 92015)	92015-1151	4
RING-SNAP (Ref # 92033)	92033-1247	2
PIN,8.2X10X14 (Ref # 92043)	92043-0100	2
RING-O,9.8X1.9 (Ref # 92055)	92055-0061	1
RING-O (Ref # 92055A)	92055-1697	2
RING-O,91X2.5 (Ref # 92055B)	92055-1707	1
BOLT,6X106 (Ref # 92150)	92150-1761	2
BOLT,FLANGED,6X20 (Ref # 92154)	92154-1219	8
BOLT,FLANGED,6X30 (Ref # 92154A)	92154-1249	2