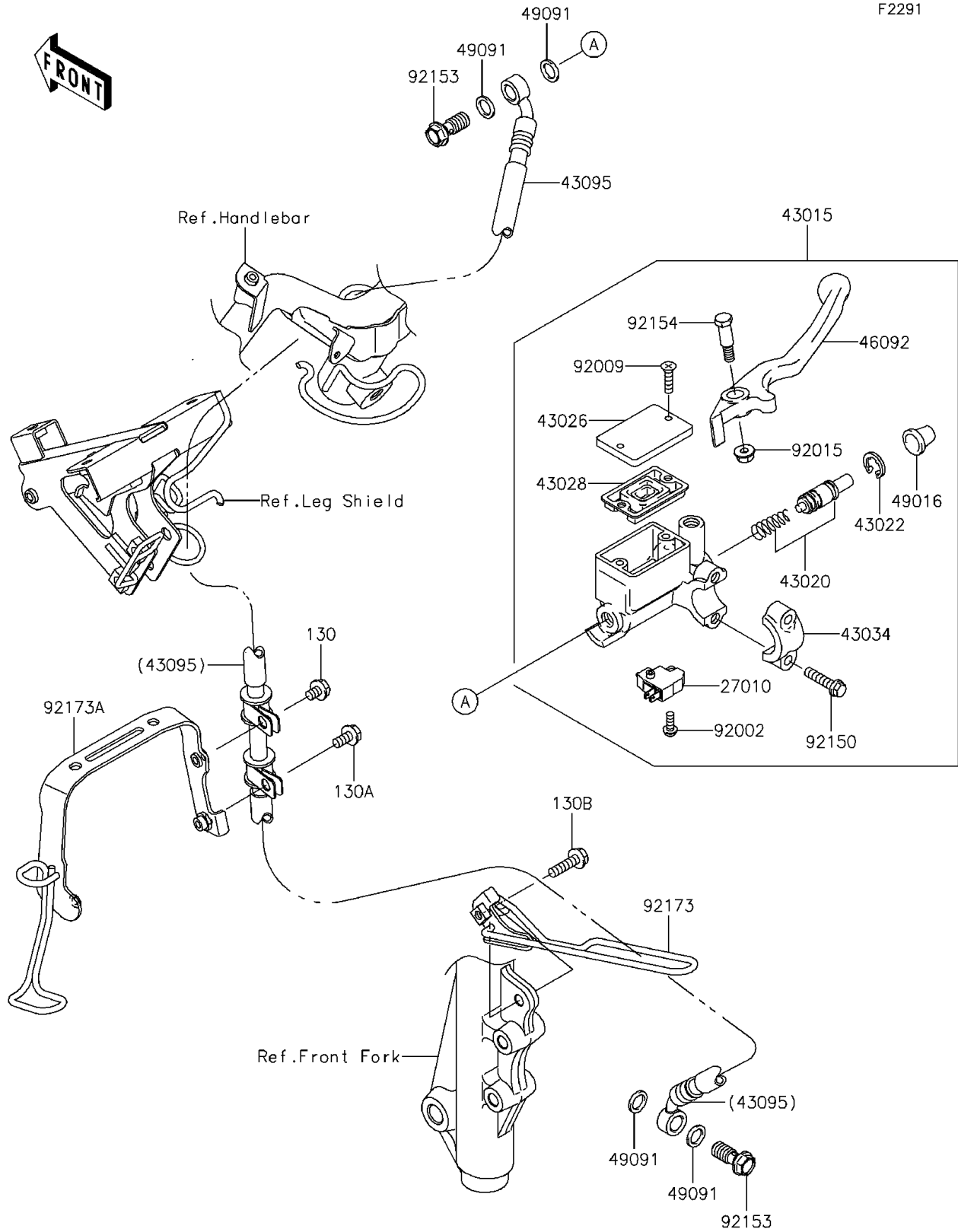


# 2013 KAZE HIT PARTS DIAGRAM

## Front Master Cylinder

F2291



## 2013 KAZE HIT PARTS LIST

### Front Master Cylinder

| ITEM NAME                                | PART NUMBER | QUANTITY |
|--|-------------|----------|
| BOLT-FLANGED,6X8 (Ref # 130)             | 130BB0608   | 1        |
| BOLT-FLANGED,6X12 (Ref # 130A)           | 130BB0612   | 1        |
| BOLT-FLANGED,6X22 (Ref # 130B)           | 130BB0622   | 1        |
| SWITCH,BRAKE (Ref # 27010)               | 27010-0025  | 1        |
| CYLINDER-ASSY-MASTER (Ref # 43015)       | 43015-0565  | 1        |
| PISTON-COMP-BRAKE (Ref # 43020)          | 43020-1095  | 1        |
| STOPPER-BRAKE,PISTON (Ref # 43022)       | 43022-1010  | 1        |
| CAP-BRAKE (Ref # 43026)                  | 43026-1074  | 1        |
| DIAPHRAGM (Ref # 43028)                  | 43028-1061  | 1        |
| HOLDER-BRAKE (Ref # 43034)               | 43034-1110  | 1        |
| HOSE-BRAKE,FR (Ref # 43095)              | 43095-0643  | 1        |
| LEVER-GRIP,FR BRAKE (Ref # 46092)        | 46092-0553  | 1        |
| COVER-SEAL,MASTER CYLINDER (Ref # 49016) | 49016-1044  | 1        |
| WASHER-SEAL,10.1X14.5X1.5 (Ref # 49091)  | 49091-0001  | 4        |
| BOLT,SCREW,4X12 (Ref # 92002)            | 92002-1323  | 1        |
| SCREW,4MM (Ref # 92009)                  | 92009-1458  | 2        |
| NUT,FLANGED,6MM (Ref # 92015)            | 92015-1528  | 1        |
| BOLT (Ref # 92150)                       | 92150-1452  | 2        |
| BOLT,OIL,L=23 (Ref # 92153)              | 92153-0029  | 2        |
| BOLT,FR BRAKE LEVER (Ref # 92154)        | 92154-0882  | 1        |
| CLAMP (Ref # 92173)                      | 92173-0760  | 1        |
| CLAMP (Ref # 92173A)                     | 92173-0761  | 1        |