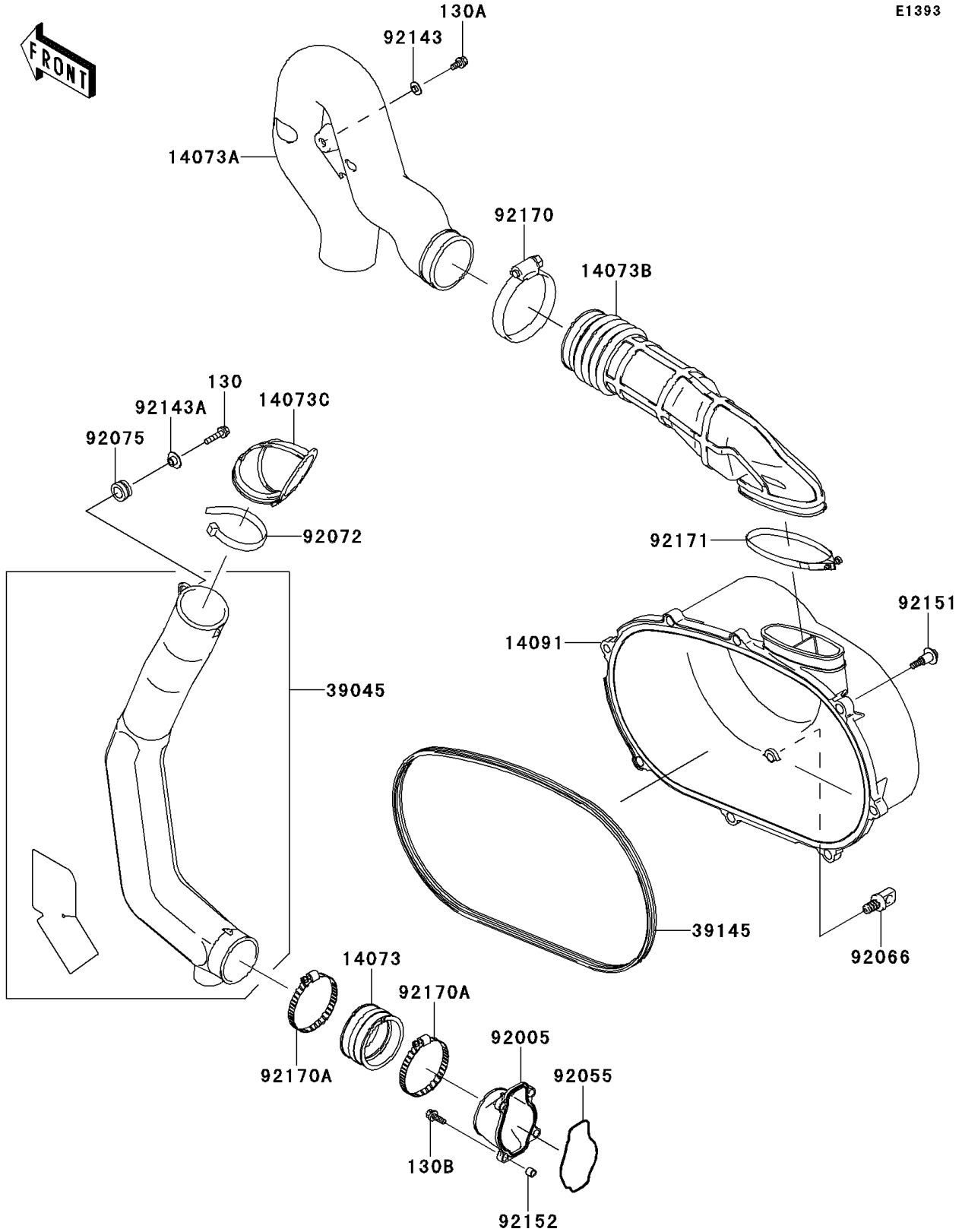


# 2007 KFX700 PARTS DIAGRAM

## Converter Cover

E1393



## 2007 KFX700 PARTS LIST

### Converter Cover

| ITEM NAME                          | PART NUMBER | QUANTITY |
|------------------------------------|-------------|----------|
| BOLT-FLANGED,6X25 (Ref # 130)      | 130BA0625   | 1        |
| BOLT-FLANGED,6X12 (Ref # 130A)     | 130BB0612   | 1        |
| BOLT-FLANGED,6X20 (Ref # 130B)     | 130CD0620   | 4        |
| DUCT,JOINT (Ref # 14073)           | 14073-1775  | 1        |
| DUCT,EXHAUST (Ref # 14073A)        | 14073-1850  | 1        |
| DUCT,EXHAUST JOINT (Ref # 14073B)  | 14073-1851  | 1        |
| DUCT,SNORKEL TOP (Ref # 14073C)    | 14073-1853  | 1        |
| COVER,BELT CONVERTER (Ref # 14091) | 14091-1535  | 1        |
| DUCT-ASSY,SNORKEL (Ref # 39045)    | 39045-1072  | 1        |
| TRIM-SEAL (Ref # 39145)            | 39145-1135  | 1        |
| FITTING (Ref # 92005)              | 92005-1387  | 1        |
| RING-O (Ref # 92055)               | 92055-1630  | 1        |
| PLUG,DRAIN,11X19 (Ref # 92066)     | 92066-1580  | 1        |
| BAND,L=368.3 (Ref # 92072)         | 92072-3872  | 1        |
| DAMPER,RUBBER (Ref # 92075)        | 92075-1123  | 1        |
| COLLAR (Ref # 92143)               | 92143-1087  | 1        |
| COLLAR (Ref # 92143A)              | 92143-1353  | 1        |
| BOLT,FLANGED,6X30 (Ref # 92151)    | 92151-1686  | 8        |
| COLLAR (Ref # 92152)               | 92152-1332  | 4        |
| CLAMP (Ref # 92170)                | 92170-1763  | 1        |
| CLAMP (Ref # 92170A)               | 92170-1764  | 2        |
| CLAMP (Ref # 92171)                | 92171-1554  | 1        |