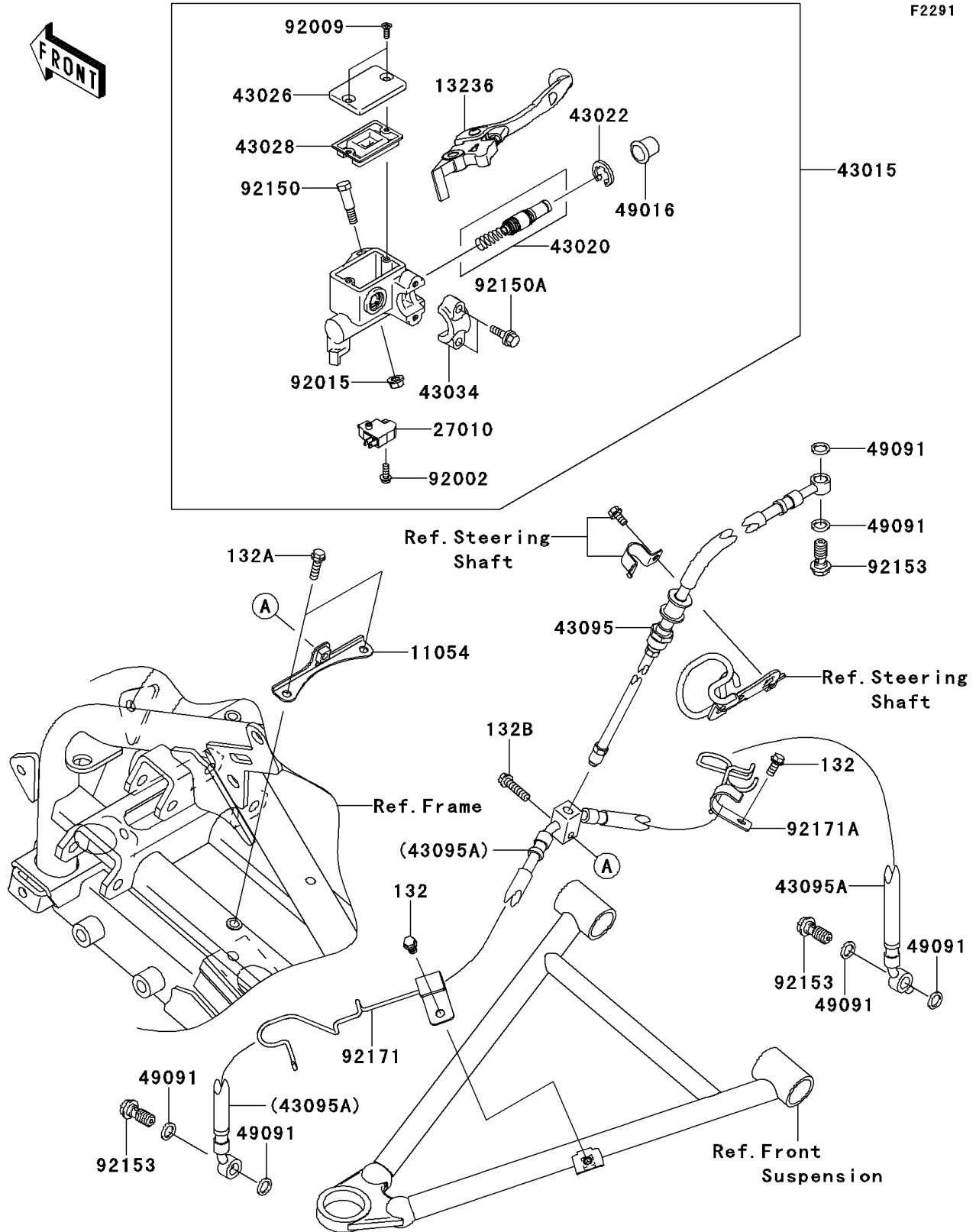


# 2008 KFX® 450R PARTS DIAGRAM

## Front Master Cylinder



## 2008 KFX® 450R PARTS LIST

### Front Master Cylinder

| ITEM NAME                                | PART NUMBER | QUANTITY |
|--|-------------|----------|
| BOLT-FLANGED-SMALL,6X12 (Ref # 132)      | 132BB0612   | 2        |
| BOLT-FLANGED-SMALL,6X20 (Ref # 132A)     | 132BB0620   | 2        |
| BOLT-FLANGED-SMALL,6X25 (Ref # 132B)     | 132BB0625   | 1        |
| BRACKET (Ref # 11054)                    | 11054-0291  | 1        |
| LEVER-COMP,FRONT BRAKE (Ref # 13236)     | 13236-0118  | 1        |
| SWITCH,BRAKE (Ref # 27010)               | 27010-0025  | 1        |
| CYLINDER-ASSY-MASTER,FR (Ref # 43015)    | 43015-0070  | 1        |
| PISTON-COMP-BRAKE (Ref # 43020)          | 43020-1098  | 1        |
| STOPPER-BRAKE,PISTON (Ref # 43022)       | 43022-1010  | 1        |
| CAP-BRAKE (Ref # 43026)                  | 43026-0010  | 1        |
| DIAPHRAGM (Ref # 43028)                  | 43028-1061  | 1        |
| HOLDER-BRAKE (Ref # 43034)               | 43034-1110  | 1        |
| HOSE-BRAKE (Ref # 43095)                 | 43095-0344  | 1        |
| HOSE-BRAKE (Ref # 43095A)                | 43095-0375  | 1        |
| COVER-SEAL,MASTER CYLINDER (Ref # 49016) | 49016-1044  | 1        |
| WASHER-SEAL,10.1X14.5X1.5 (Ref # 49091)  | 49091-0001  | 6        |
| BOLT,SCREW,4X12 (Ref # 92002)            | 92002-1323  | 1        |
| SCREW (Ref # 92009)                      | 92009-1795  | 2        |
| NUT,FLANGED,6MM (Ref # 92015)            | 92015-1528  | 1        |
| BOLT,LEVER SET (Ref # 92150)             | 92150-1451  | 1        |
| BOLT (Ref # 92150A)                      | 92150-1452  | 2        |
| BOLT,OIL,L=23 (Ref # 92153)              | 92153-0627  | 3        |
| CLAMP,LH (Ref # 92171)                   | 92171-0890  | 1        |
| CLAMP,RH (Ref # 92171A)                  | 92171-0891  | 1        |