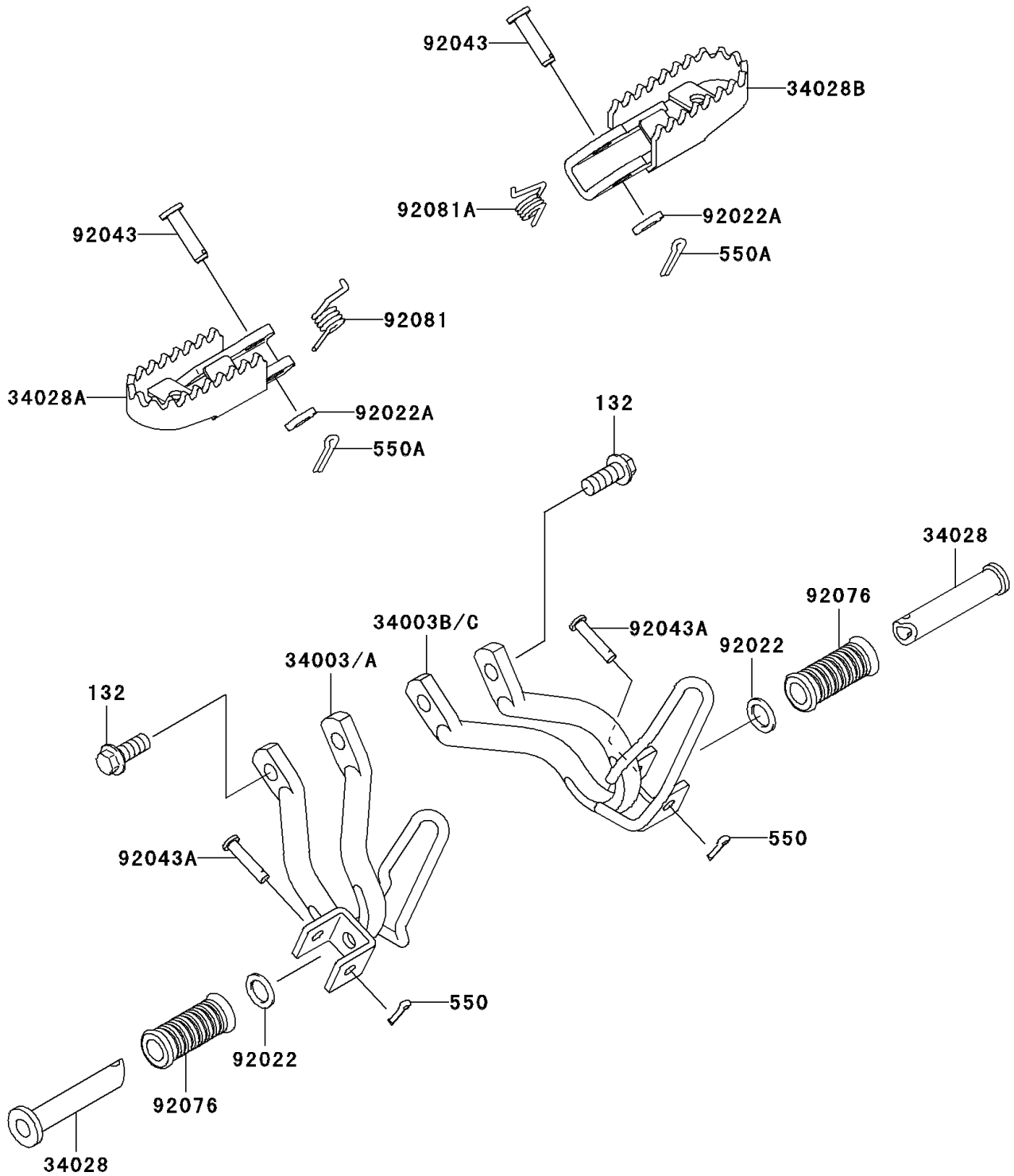


# 2010 Super Sherpa (Canada Only) PARTS DIAGRAM

Footrests

F2160



## 2010 Super Sherpa (Canada Only) PARTS LIST

### Footrests

ITEM NAME	PART NUMBER	QUANTITY
BOLT-FLANGED-SMALL,8X20 (Ref # 132)	132BB0820	4
PIN-COTTER,2.0X15 (Ref # 550)	550AA2015	2
PIN-COTTER,2.0X18 (Ref # 550A)	550AA2018	2
HOLDER-STEP,RR,LH,F.S.BLACK (Ref # 34003A)	34003-1460-18R	1
HOLDER-STEP,RR,RH,F.S.BLACK (Ref # 34003C)	34003-1461-18R	1
STEP,RR (Ref # 34028)	34028-009	2
STEP,FR,LH (Ref # 34028A)	34028-1431	1
STEP,FR,RH (Ref # 34028B)	34028-1432	1
WASHER,20X30X2.3 (Ref # 92022)	92022-1568	2
WASHER,10.5X20X1 (Ref # 92022A)	92022-239	2
PIN,10X35 (Ref # 92043)	92043-1217	2
PIN,6X28 (Ref # 92043A)	92043-1464	2
DAMPER (Ref # 92076)	92076-020	2
SPRING,STEP,LH (Ref # 92081)	92081-1606	1
SPRING,STEP,RH (Ref # 92081A)	92081-1607	1