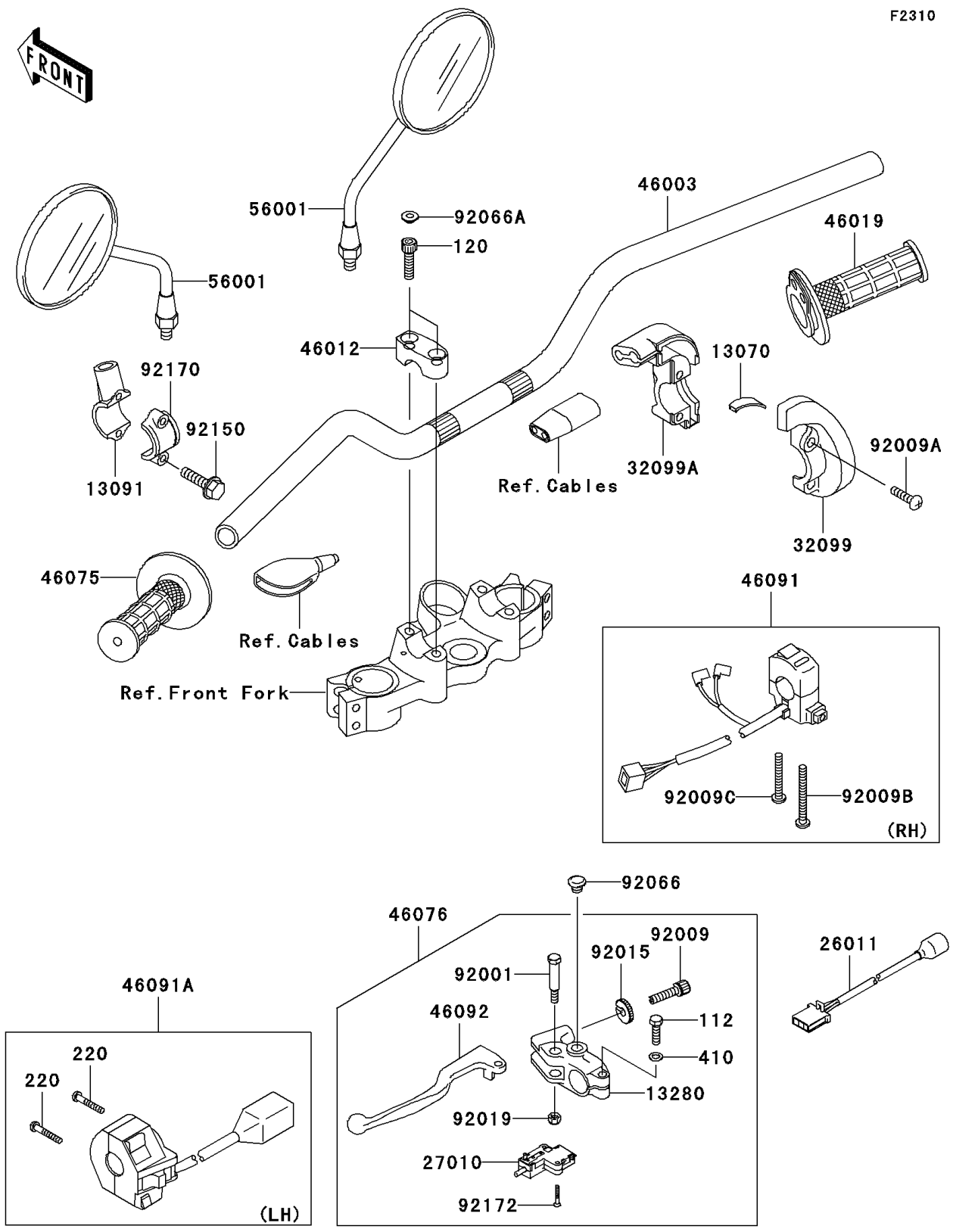


2010 Super Sherpa (Canada Only) PARTS DIAGRAM

Handlebar

F2310



2010 Super Sherpa (Canada Only) PARTS LIST

Handlebar

ITEM NAME	PART NUMBER	QUANTITY
BOLT-UPSET,6X22 (Ref # 112)	112BA0622	1
BOLT-SOCKET,8X30 (Ref # 120)	120CB0830	4
SCREW-PAN-CROSS,5X30 (Ref # 220)	220AB0530	2
WASHER-PLAIN-SMALL (Ref # 410)	410AA0600	1
GUIDE,THROTTLE CABLE (Ref # 13070)	13070-1274	1
HOLDER,MIRROR (Ref # 13091)	13091-1995	1
HOLDER (Ref # 13280)	13280-0348	1
WIRE-LEAD (Ref # 26011)	26011-0268	1
SWITCH,CLUTCH,BLACK (Ref # 27010)	27010-1094	1
CASE,THROTTLE,UPP (Ref # 32099)	32099-1146	1
CASE,THROTTLE,LWR (Ref # 32099A)	32099-1186	1
HANDLE (Ref # 46003)	46003-0182	1
HOLDER-HANDLE,UPP (Ref # 46012)	46012-1276	2
GRIP-ASSY,THROTTLE (Ref # 46019)	46019-1093	1
GRIP,LH (Ref # 46075)	46075-1149	1
LEVER-ASSY-GRIP (Ref # 46076)	46076-0065	1
HOUSING-ASSY-CONTROL,RH (Ref # 46091)	46091-1678	1
HOUSING-ASSY-CONTROL,LH (Ref # 46091A)	46091-1690	1
LEVER-GRIP,CLUTCH (Ref # 46092)	46092-1190	1
MIRROR-ASSY (Ref # 56001)	56001-1339	2
BOLT,CLUTCH LEVER (Ref # 92001)	92001-1075	1
SCREW,CABLE ADJUST,8MM (Ref # 92009)	92009-1435	1
SCREW,5X16 (Ref # 92009A)	92009-1699	2
SCREW,4X45 (Ref # 92009B)	92009-1803	1
SCREW,4X32 (Ref # 92009C)	92009-1804	1
NUT,CABLE ADJUST LOCK,8MM (Ref # 92015)	92015-1596	1
NUT,LOCK,6MM (Ref # 92019)	92019-008	1
PLUG,9.5X8,POLYETHYLENE (Ref # 92066)	92066-1077	1
PLUG (Ref # 92066A)	92066-1277	4

2010 Super Sherpa (Canada Only) PARTS LIST

Handlebar

ITEM NAME	PART NUMBER	QUANTITY
BOLT (Ref # 92150)	92150-1474	2
CLAMP, LEVER HOLDER (Ref # 92170)	92170-1226	1
SCREW, 3X16 (Ref # 92172)	92172-0183	2