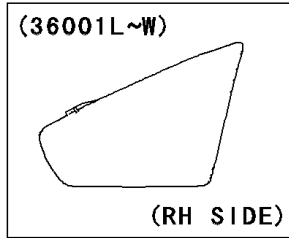


2008 Vulcan® 900 Classic PARTS DIAGRAM

Side Covers/Chain Cover(B6F-B9F)

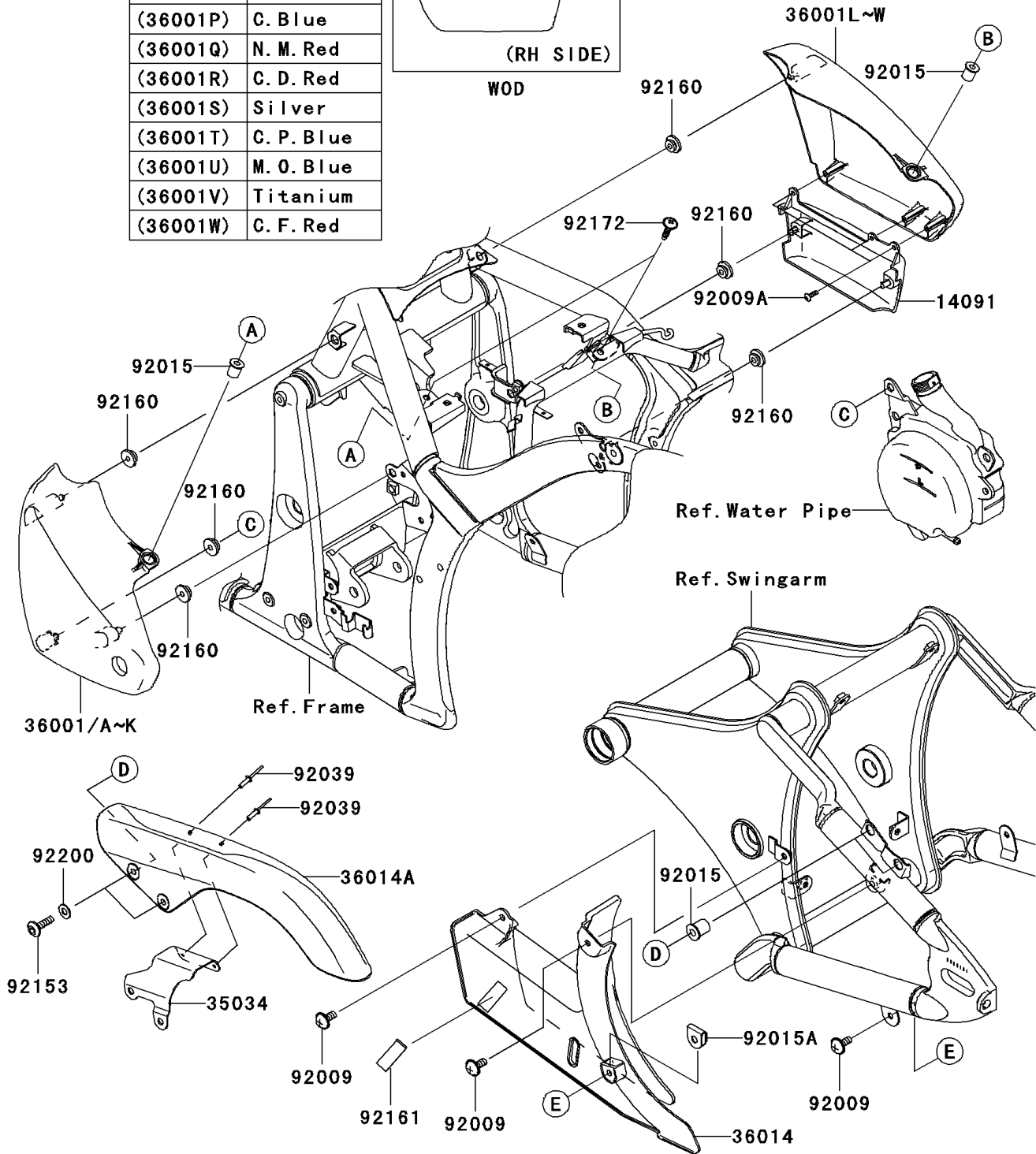


(36001L)	Ebony
(36001M)	C. C. Red
(36001N)	L. P. Blue
(36001O)	M. D. Black
(36001P)	C. Blue
(36001Q)	N. M. Red
(36001R)	C. D. Red
(36001S)	Silver
(36001T)	C. P. Blue
(36001U)	M. O. Blue
(36001V)	Titanium
(36001W)	C. F. Red



WOD

F2610



2008 Vulcan® 900 Classic PARTS LIST

Side Covers/Chain Cover(B6F-B9F)

ITEM NAME	PART NUMBER	QUANTITY
COVER,SIDE COVER,RH (Ref # 14091)	14091-0641	1
REINFORCE (Ref # 35034)	35034-0082	1
COVER-SIDE,LH,L.P.BLUE (Ref # 36001B)	36001-0081-M4	1
COVER-SIDE,LH,M.D,BLACK (Ref # 36001C)	36001-0081-17K	1
COVER-SIDE,LH,N.M.RED (Ref # 36001E)	36001-0081-19J	1
COVER-SIDE,RH,L.P.BLUE (Ref # 36001N)	36001-0082-M4	1
COVER-SIDE,RH,M.D,BLACK (Ref # 36001O)	36001-0082-17K	1
COVER-SIDE,RH,N.M.RED (Ref # 36001Q)	36001-0082-19J	1
CASE-CHAIN,LWR (Ref # 36014)	36014-0031	1
CASE-CHAIN,UPP (Ref # 36014A)	36014-0032	1
SCREW,6X14 (Ref # 92009)	92009-1662	3
SCREW,TAPPING,4X14 (Ref # 92009A)	92009-1792	3
NUT (Ref # 92015)	92015-1700	4
NUT,CLIP,6MM (Ref # 92015A)	92015-1904	1
RIVET (Ref # 92039)	92039-1251	2
BOLT,SOCKET,6X22 (Ref # 92153)	92153-1356	2
DAMPER (Ref # 92160)	92160-1613	6
DAMPER (Ref # 92161)	92161-0124	1
SCREW,6X26 (Ref # 92172)	92172-0137	2
WASHER,6.5X14X1 (Ref # 92200)	92200-1388	2