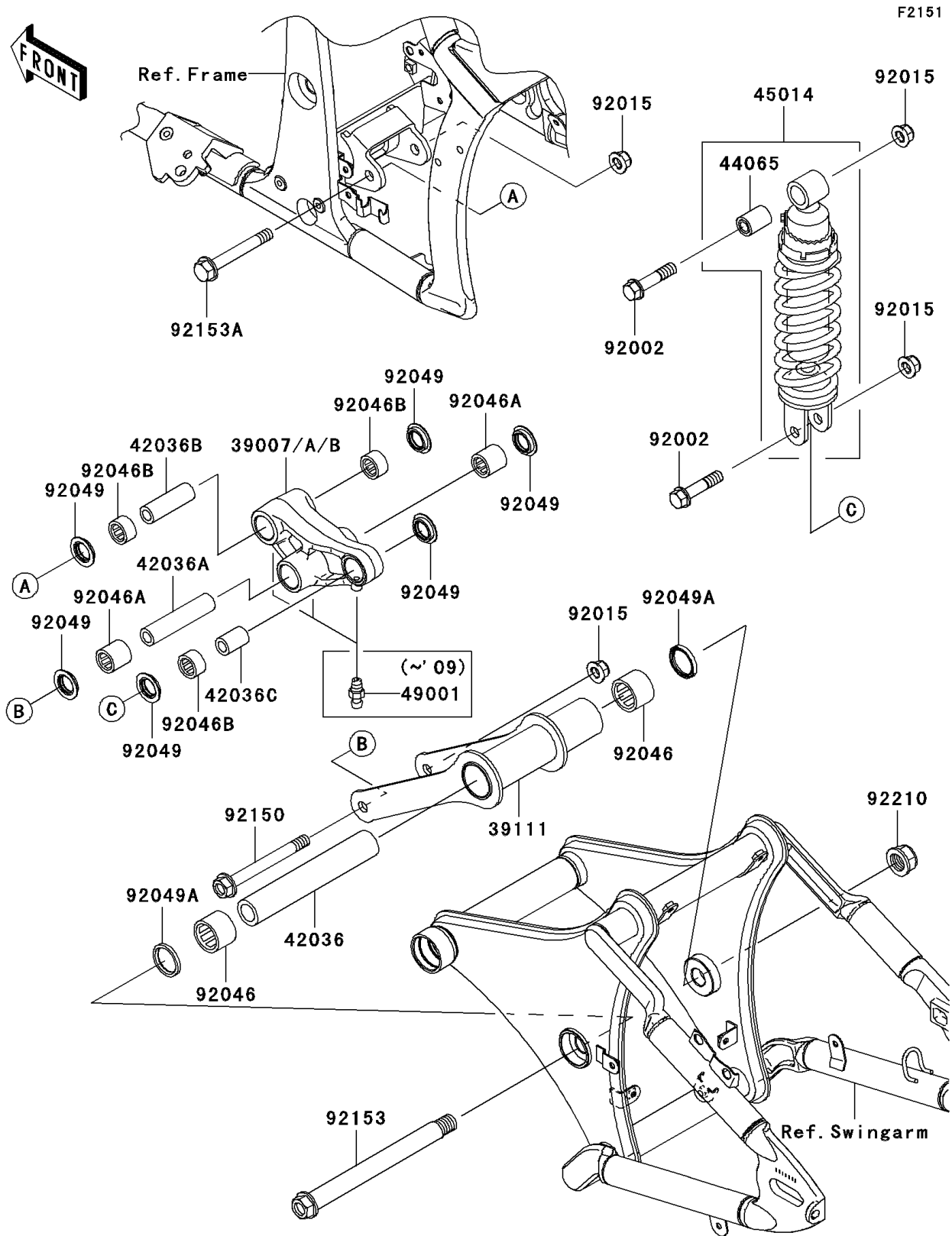


# 2008 Vulcan® 900 Classic LT PARTS DIAGRAM

Suspension/Shock Absorber



## 2008 Vulcan® 900 Classic LT PARTS LIST

### Suspension/Shock Absorber

| ITEM NAME                              | PART NUMBER | QUANTITY |
|--|-------------|----------|
| ARM-SUSP,UNI TRAK (Ref # 39007)        | 39007-0062  | 1        |
| ROD-TIE,SUSPENSION (Ref # 39111)       | 39111-0026  | 1        |
| SLEEVE,20.1X30X171 (Ref # 42036)       | 42036-0032  | 1        |
| SLEEVE,12.1X20X92 (Ref # 42036A)       | 42036-0040  | 1        |
| SLEEVE,ARM,FR (Ref # 42036B)           | 42036-1078  | 1        |
| SLEEVE,12.1X20X30 (Ref # 42036C)       | 42036-1234  | 1        |
| BUSHING,SHOCKABSORBER (Ref # 44065)    | 44065-1017  | 1        |
| SHOCKABSORBER (Ref # 45014)            | 45014-0157  | 1        |
| NIPPLE-GREASE (Ref # 49001)            | 49001-0001  | 3        |
| BOLT,12X55 (Ref # 92002)               | 92002-1130  | 2        |
| NUT,LOCK,FLANGED,12MM (Ref # 92015)    | 92015-1433  | 4        |
| BEARING-NEEDLE,30BM3726 (Ref # 92046)  | 92046-0019  | 2        |
| BEARING-NEEDLE,BM202726 (Ref # 92046A) | 92046-1110  | 2        |
| BEARING-NEEDLE,BM202715 (Ref # 92046B) | 92046-1112  | 3        |
| SEAL-OIL,ARM (Ref # 92049)             | 92049-1109  | 6        |
| SEAL-OIL,BJN 30374 (Ref # 92049A)      | 92049-1205  | 2        |
| BOLT,FLANGED,12X117 (Ref # 92150)      | 92150-1895  | 1        |
| BOLT,FLANGED,18X214 (Ref # 92153)      | 92153-1392  | 1        |
| BOLT,FLANGED,12X90 (Ref # 92153A)      | 92153-1403  | 1        |
| NUT,LOCK,18MM (Ref # 92210)            | 92210-0267  | 1        |