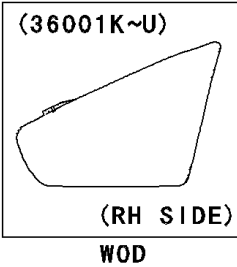


# 2009 Vulcan® 900 Classic LT PARTS DIAGRAM

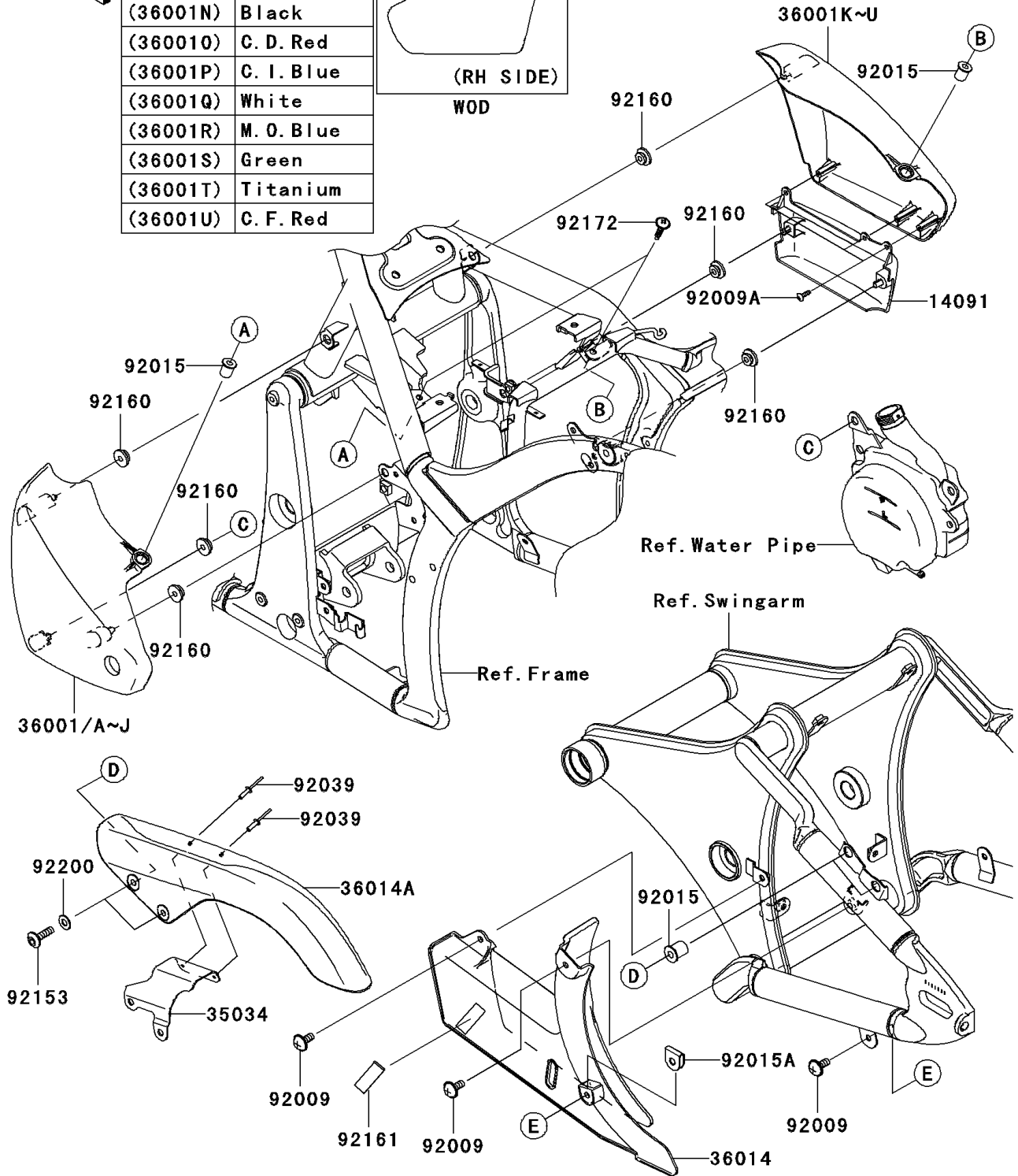
Side Covers/Chain Cover



(36001K)	Ebony
(36001L)	C. C. Red
(36001M)	L. P. Blue
(36001N)	Black
(36001O)	C. D. Red
(36001P)	C. I. Blue
(36001Q)	White
(36001R)	M. O. Blue
(36001S)	Green
(36001T)	Titanium
(36001U)	C. F. Red



F2610



## 2009 Vulcan® 900 Classic LT PARTS LIST

### Side Covers/Chain Cover

ITEM NAME	PART NUMBER	QUANTITY
COVER,SIDE COVER,RH (Ref # 14091)	14091-0641	1
REINFORCE (Ref # 35034)	35034-0082	1
COVER-SIDE,LH,M.D,BLACK (Ref # 36001C)	36001-0081-17K	1
COVER-SIDE,LH,C.D.RED (Ref # 36001D)	36001-0081-25T	1
COVER-SIDE,LH,M.TITANIUM (Ref # 36001I)	36001-0081-740	1
COVER-SIDE,RH,M.D,BLACK (Ref # 36001N)	36001-0082-17K	1
COVER-SIDE,RH,C.D.RED (Ref # 36001O)	36001-0082-25T	1
COVER-SIDE,RH,M.TITANIUM (Ref # 36001T)	36001-0082-740	1
CASE-CHAIN,LWR (Ref # 36014)	36014-0031	1
CASE-CHAIN,UPP (Ref # 36014A)	36014-0032	1
SCREW,6X14 (Ref # 92009)	92009-1662	3
SCREW,TAPPING,4X14 (Ref # 92009A)	92009-1792	3
NUT (Ref # 92015)	92015-1700	4
NUT,CLIP,6MM (Ref # 92015A)	92015-1904	1
RIVET (Ref # 92039)	92039-1251	2
BOLT,SOCKET,6X22 (Ref # 92153)	92153-1356	2
DAMPER (Ref # 92160)	92160-1613	6
DAMPER (Ref # 92161)	92161-0124	1
SCREW,6X26 (Ref # 92172)	92172-0137	2
WASHER,6.5X14X1 (Ref # 92200)	92200-1388	2