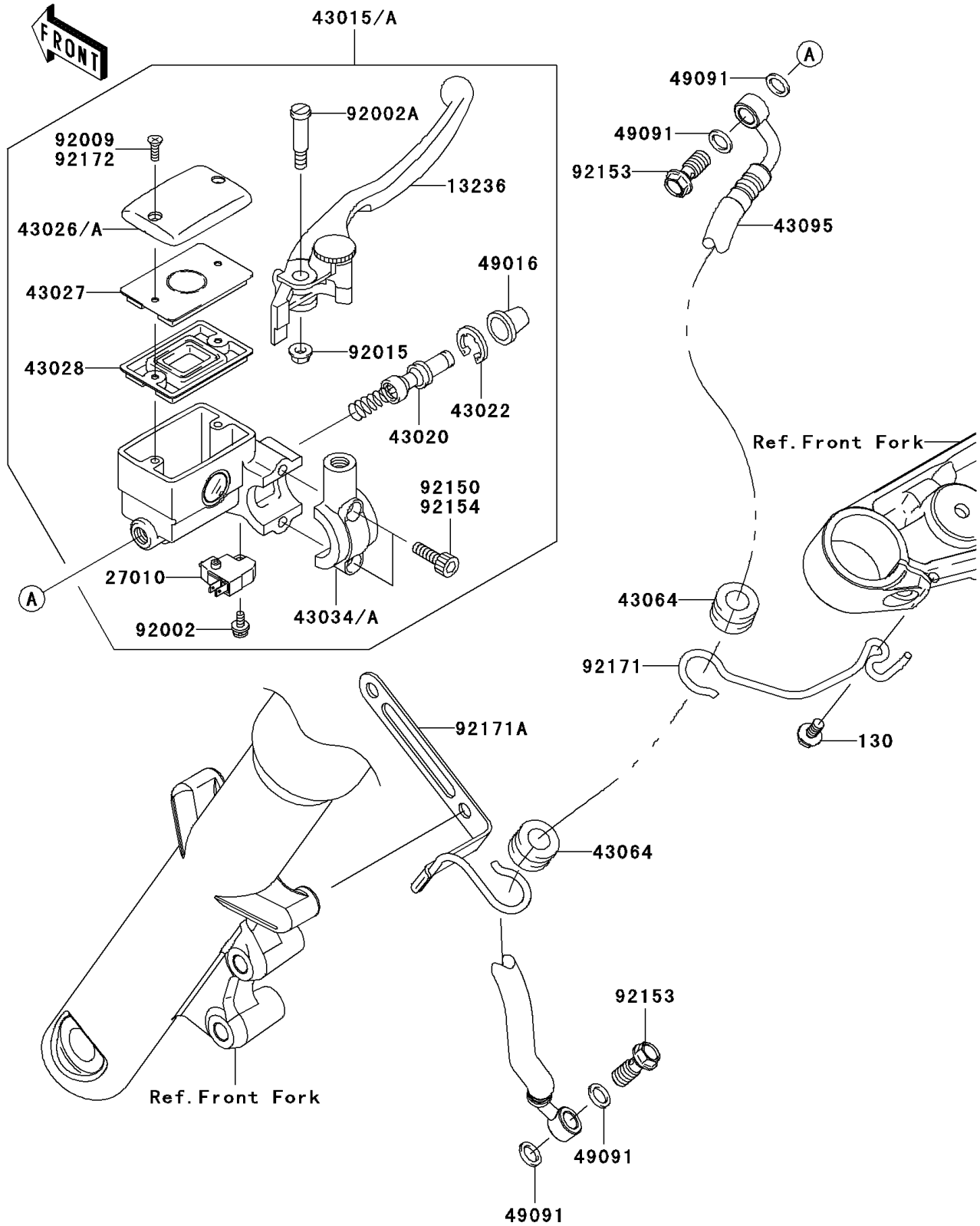


2011 VULCAN® 900 CUSTOM PARTS DIAGRAM

Front Master Cylinder

F2291



2011 VULCAN® 900 CUSTOM PARTS LIST

Front Master Cylinder

| ITEM NAME | PART NUMBER | QUANTITY |
|--|-------------|----------|
| BOLT-FLANGED,6X12 (Ref # 130) | 130BB0612 | 1 |
| LEVER-COMP,FRONT BRAKE (Ref # 13236) | 13236-1315 | 1 |
| SWITCH,BRAKE (Ref # 27010) | 27010-0025 | 1 |
| CYLINDER-ASSY-MASTER,FR (Ref # 43015A) | 43015-0169 | 1 |
| PISTON-COMP-BRAKE (Ref # 43020) | 43020-1098 | 1 |
| STOPPER-BRAKE,PISTON (Ref # 43022) | 43022-1010 | 1 |
| CAP-BRAKE (Ref # 43026A) | 43026-0025 | 1 |
| PLATE-DIAPHRAGM (Ref # 43027) | 43027-1059 | 1 |
| DIAPHRAGM,MASTER CYLINDER (Ref # 43028) | 43028-1058 | 1 |
| HOLDER-BRAKE (Ref # 43034) | 43034-0071 | 1 |
| GROMMET,HOSE CLAMP (Ref # 43064) | 43064-006 | 2 |
| HOSE-BRAKE,FR (Ref # 43095) | 43095-0250 | 1 |
| COVER-SEAL,MASTER CYLINDER (Ref # 49016) | 49016-1044 | 1 |
| WASHER-SEAL,10.1X14.5X1.5 (Ref # 49091) | 49091-0001 | 4 |
| BOLT,SCREW,4X12 (Ref # 92002) | 92002-1323 | 1 |
| BOLT,LEVER SET (Ref # 92002A) | 92002-1561 | 1 |
| SCREW,4MM (Ref # 92009) | 92009-1458 | 2 |
| NUT,FLANGED,6MM (Ref # 92015) | 92015-1528 | 1 |
| BOLT,OIL,L=23 (Ref # 92153) | 92153-0627 | 2 |
| BOLT,SOCKET,6MM (Ref # 92154) | 92154-0541 | 2 |
| CLAMP,BRAKE HOSE (Ref # 92171) | 92171-0629 | 1 |
| CLAMP,BRAKE HOSE (Ref # 92171A) | 92171-0770 | 1 |