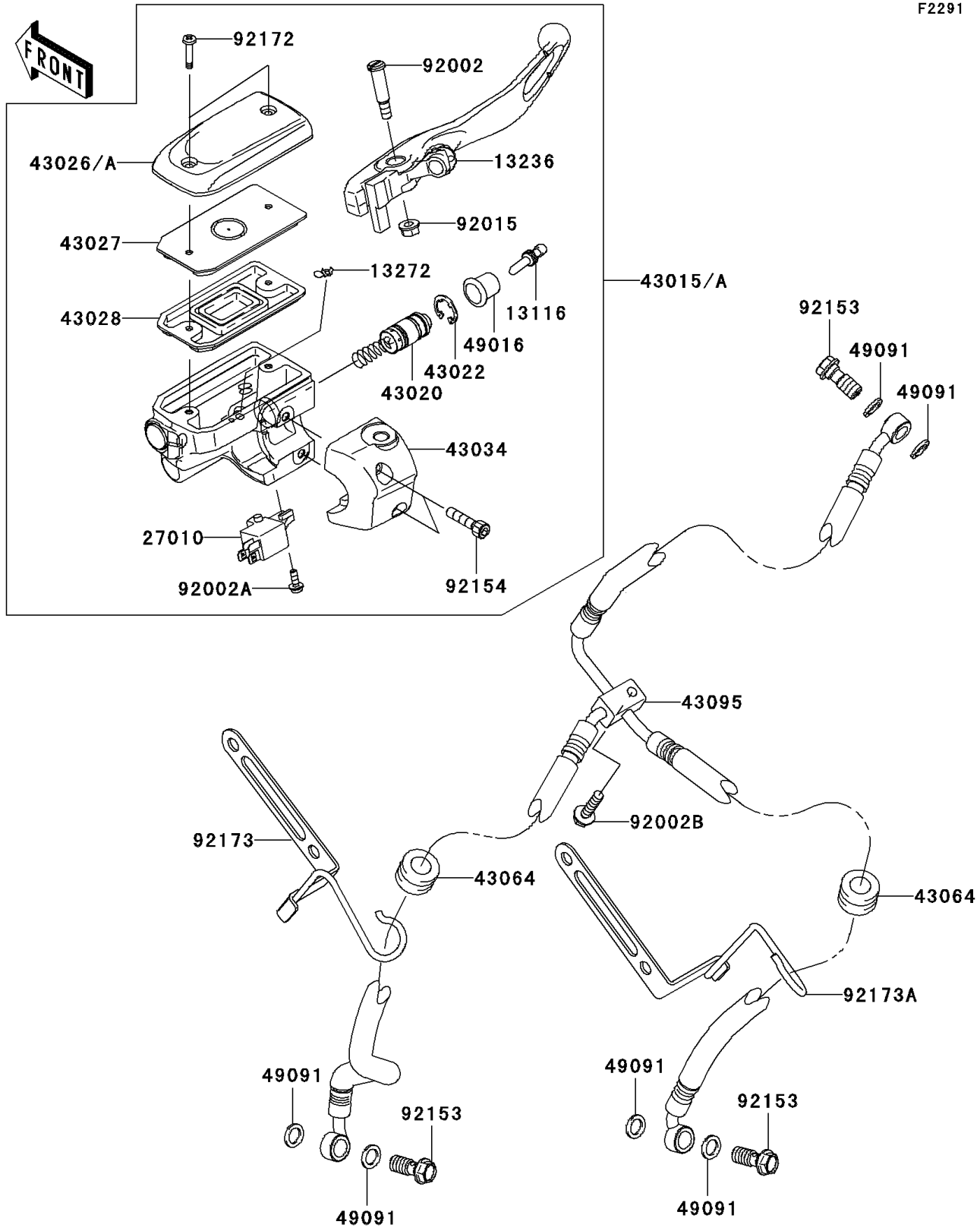


# 2009 Vulcan® 1700 Nomad™ PARTS DIAGRAM

Front Master Cylinder

F2291



## 2009 Vulcan® 1700 Nomad™ PARTS LIST

### Front Master Cylinder

| ITEM NAME                                  | PART NUMBER | QUANTITY |
|--|-------------|----------|
| ROD-PUSH (Ref # 13116)                     | 13116-0039  | 1        |
| LEVER-COMP,FRONT BRAKE (Ref # 13236)       | 13236-0166  | 1        |
| PLATE (Ref # 13272)                        | 13272-0573  | 1        |
| SWITCH,CRUISE CONTROL CANCEL (Ref # 27010) | 27010-1232  | 1        |
| CYLINDER-ASSY-MASTER,FR (Ref # 43015)      | 43015-0111  | 1        |
| PISTON-COMP-BRAKE (Ref # 43020)            | 43020-0014  | 1        |
| STOPPER-BRAKE,PISTON (Ref # 43022)         | 43022-1010  | 1        |
| CAP-BRAKE (Ref # 43026)                    | 43026-0017  | 1        |
| PLATE-DIAPHRAGM (Ref # 43027)              | 43027-0004  | 1        |
| DIAPHRAGM (Ref # 43028)                    | 43028-0010  | 1        |
| HOLDER-BRAKE,MASTER CYLINDER (Ref # 43034) | 43034-0041  | 1        |
| GROMMET,HOSE CLAMP (Ref # 43064)           | 43064-006   | 2        |
| HOSE-BRAKE,FR (Ref # 43095)                | 43095-0458  | 1        |
| COVER-SEAL,MASTER CYLINDER (Ref # 49016)   | 49016-1044  | 1        |
| WASHER-SEAL,10.1X14.5X1.5 (Ref # 49091)    | 49091-0001  | 6        |
| BOLT,LEVER SET,BLACK (Ref # 92002)         | 92002-1322  | 1        |
| BOLT,SCREW,4X12 (Ref # 92002A)             | 92002-1323  | 1        |
| BOLT,6X26.6 (Ref # 92002B)                 | 92002-1912  | 1        |
| NUT,FLANGED,6MM (Ref # 92015)              | 92015-1528  | 1        |
| BOLT,OIL,L=23 (Ref # 92153)                | 92153-0627  | 3        |
| BOLT,SOCKET (Ref # 92154)                  | 92154-0167  | 2        |
| SCREW,4MM (Ref # 92172)                    | 92172-0385  | 2        |
| CLAMP,FRONT FENDER,LH (Ref # 92173)        | 92173-0073  | 1        |
| CLAMP,FRONT FENDER,RH (Ref # 92173A)       | 92173-0074  | 1        |