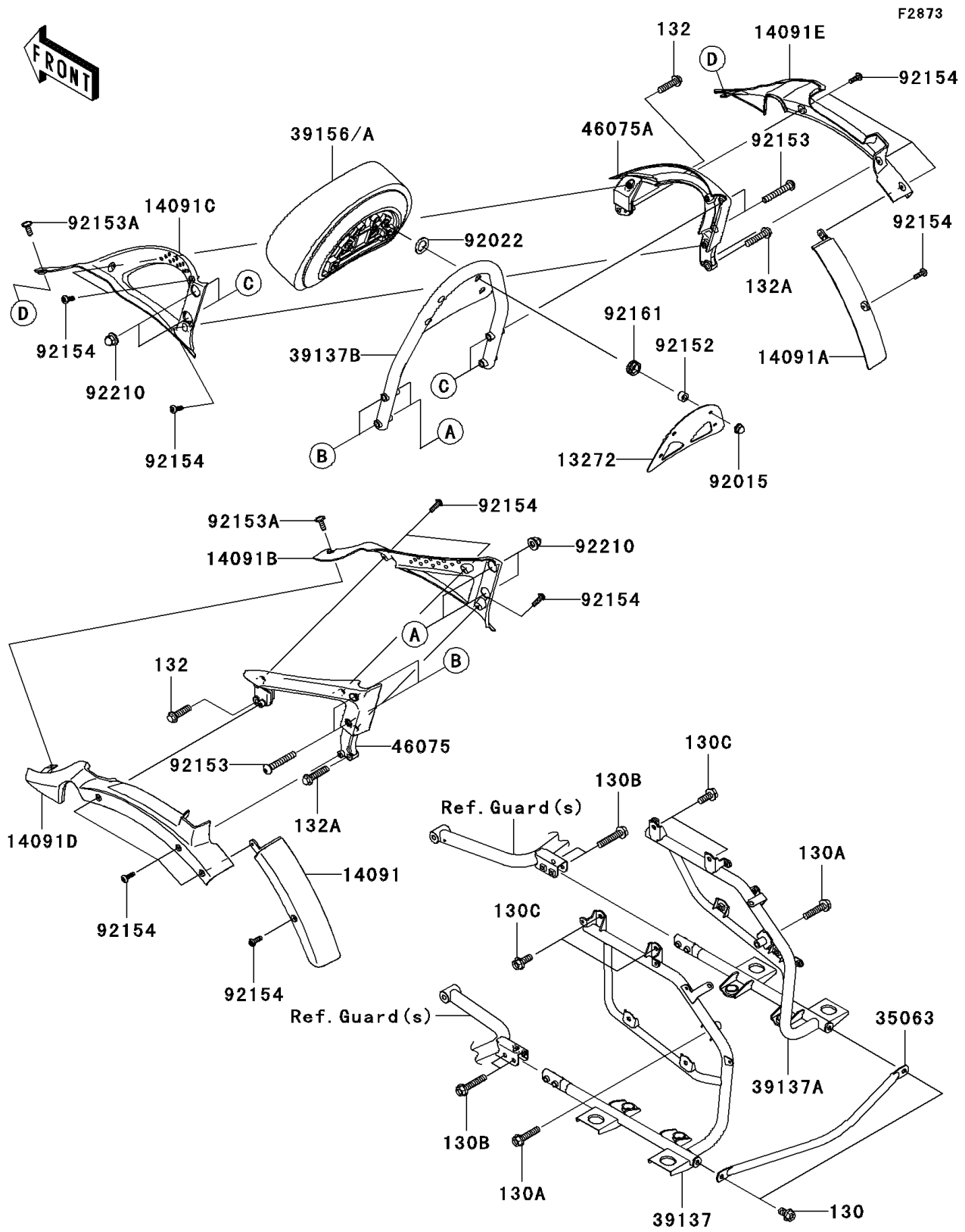


2009 Vulcan® 1700 Nomad™ PARTS DIAGRAM

Saddlebags(Side Bag Bracket)



2009 Vulcan® 1700 Nomad™ PARTS LIST

Saddlebags(Side Bag Bracket)

ITEM NAME	PART NUMBER	QUANTITY
BOLT-FLANGED,8X14 (Ref # 130)	130BA0814	2
BOLT-FLANGED,8X35 (Ref # 130A)	130BA0835	2
BOLT-FLANGED,8X40 (Ref # 130B)	130BA0840	4
BOLT-FLANGED,8X20 (Ref # 130C)	130CA0820	4
BOLT-FLANGED-SMALL,8X30 (Ref # 132)	132BA0830	2
BOLT-FLANGED-SMALL,8X35 (Ref # 132A)	132BA0835	2
PLATE,BACKREST (Ref # 13272)	13272-0747	1
COVER,STRUT,LH (Ref # 14091)	14091-0957	1
COVER,STRUT,RH (Ref # 14091A)	14091-0958	1
COVER,GRIP,INNER,LH (Ref # 14091B)	14091-0962	1
COVER,GRIP,INNER,RH (Ref # 14091C)	14091-0963	1
COVER,GRIP,OUTER,LH (Ref # 14091D)	14091-0964	1
COVER,GRIP,OUTER,RH (Ref # 14091E)	14091-0965	1
STAY,PANNIER (Ref # 35063)	35063-0537	1
STAY-COMP,PANNIER,LH (Ref # 39137)	39137-0048	1
STAY-COMP,PANNIER,RH (Ref # 39137A)	39137-0049	1
STAY-COMP,BACKREST (Ref # 39137B)	39137-0053	1
PAD,BACKREST,BLACK (Ref # 39156)	39156-0526-MA	1
GRIP,LH (Ref # 46075)	46075-0075	1
GRIP,RH (Ref # 46075A)	46075-0076	1
NUT,CAP,6MM (Ref # 92015)	92015-1385	4
WASHER,15.1X23X1.8 (Ref # 92022)	92022-1755	4
COLLAR,6.5X12X7.5 (Ref # 92152)	92152-0793	4
BOLT,SOCKET,8X50 (Ref # 92153)	92153-0420	4
BOLT,SOCKET,6X16 (Ref # 92153A)	92153-0817	2
BOLT,SOCKET,5X16 (Ref # 92154)	92154-0209	14
DAMPER (Ref # 92161)	92161-0570	4
NUT,CAP,8MM (Ref # 92210)	92210-1161	4