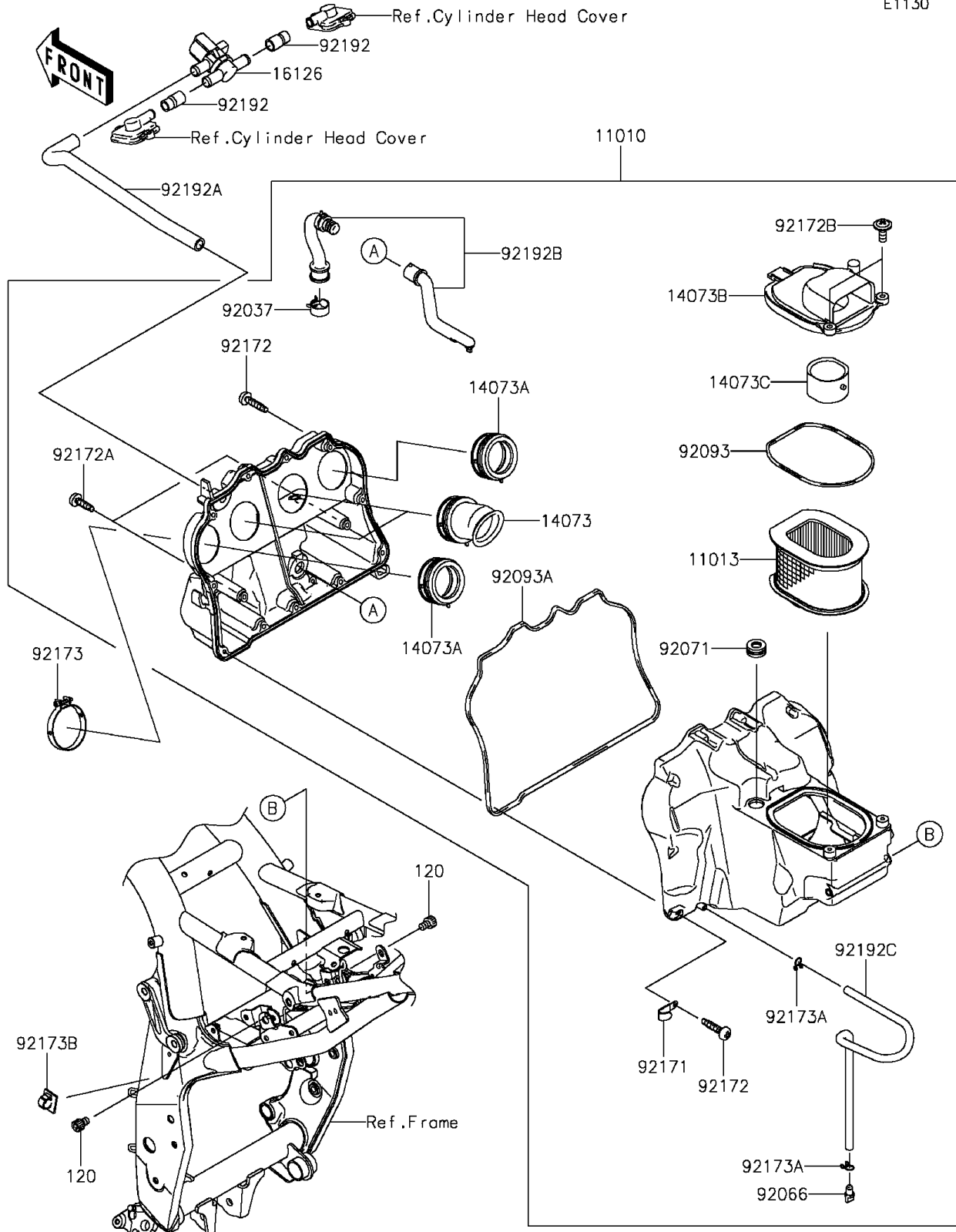


# 2015 ZR800 (European) PARTS DIAGRAM

Air Cleaner

E1130



## 2015 ZR800 (European) PARTS LIST

### Air Cleaner

| ITEM NAME                         | PART NUMBER | QUANTITY |
|-----------------------------------|-------------|----------|
| BOLT-SOCKET,6X8 (Ref # 120)       | 120CA0608   | 2        |
| FILTER-ASSY-AIR (Ref # 11010)     | 11010-0775  | 1        |
| ELEMENT-AIR FILTER (Ref # 11013)  | 11013-0044  | 1        |
| DUCT,FUNNEL #2&#3 (Ref # 14073)   | 14073-0738  | 2        |
| DUCT,FUNNEL #1&#4 (Ref # 14073A)  | 14073-0746  | 2        |
| DUCT,INTAKE,TOP (Ref # 14073B)    | 14073-0748  | 1        |
| DUCT,INTAKE,UNDER (Ref # 14073C)  | 14073-0749  | 1        |
| VALVE,AIR SWITCHING (Ref # 16126) | 16126-1437  | 1        |
| CLAMP,HOSE CLIP (Ref # 92037)     | 92037-1460  | 1        |
| PLUG,DRAIN (Ref # 92066)          | 92066-1211  | 1        |
| GROMMET (Ref # 92071)             | 92071-0714  | 1        |
| SEAL (Ref # 92093)                | 92093-0591  | 1        |
| SEAL (Ref # 92093A)               | 92093-0592  | 1        |
| CLAMP (Ref # 92171)               | 92171-1539  | 1        |
| SCREW,TAPPING,5X25 (Ref # 92172)  | 92172-0803  | 11       |
| SCREW,TAPPING,5X20 (Ref # 92172A) | 92172-0804  | 2        |
| SCREW,6X16 (Ref # 92172B)         | 92172-0805  | 2        |
| CLAMP,58MM (Ref # 92173)          | 92173-0927  | 4        |
| CLAMP,10MM (Ref # 92173A)         | 92173-1044  | 2        |
| CLAMP,DRAIN (Ref # 92173B)        | 92173-1055  | 1        |
| TUBE,HEAD-ASV (Ref # 92192)       | 92192-0033  | 2        |
| TUBE,ASV-A/C (Ref # 92192A)       | 92192-1106  | 1        |
| TUBE,BREATHHER (Ref # 92192B)     | 92192-1158  | 1        |
| TUBE,DRAIN (Ref # 92192C)         | 92192-1313  | 1        |