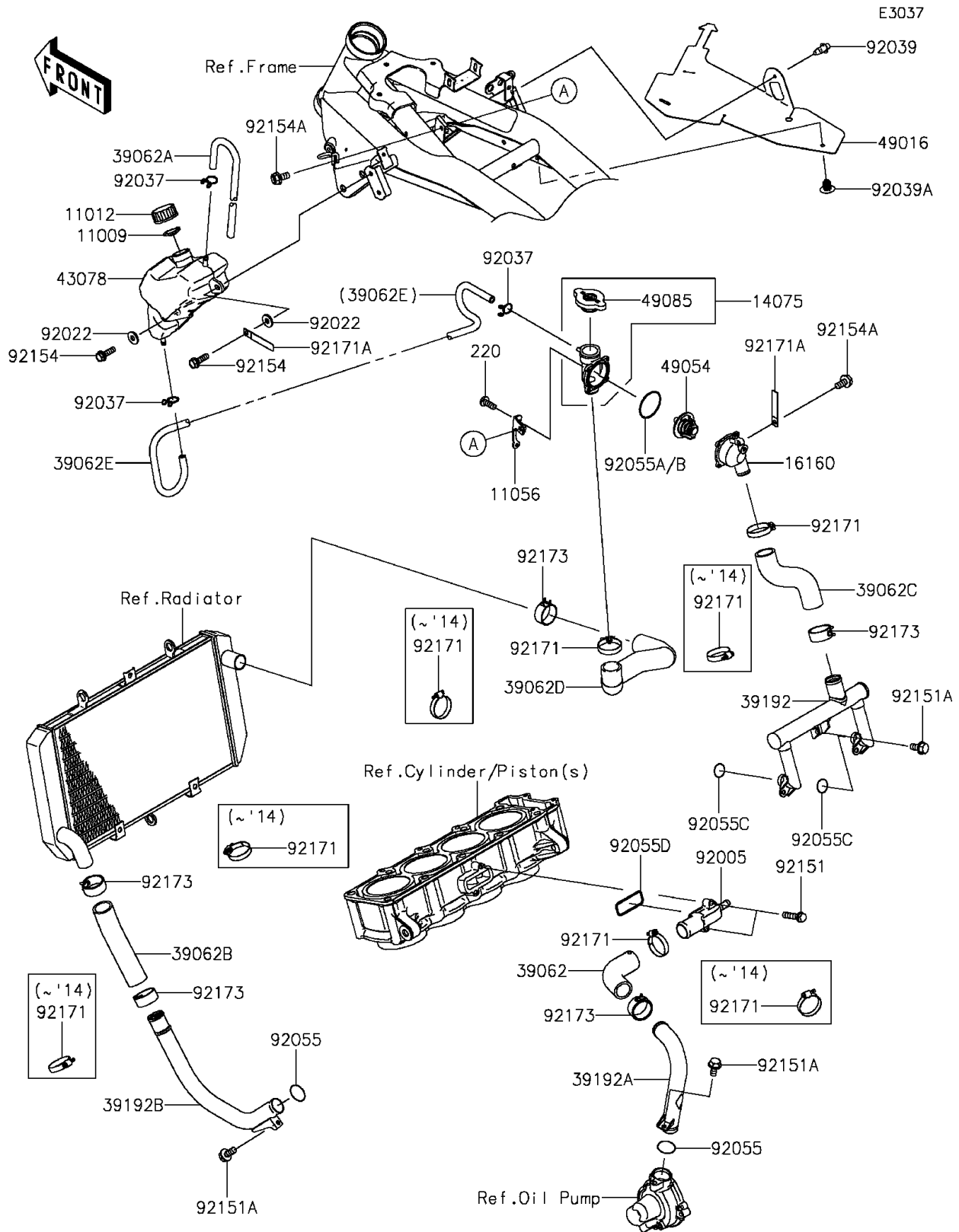


# 2013 ZR800 (European) PARTS DIAGRAM

## Water Pipe



## 2013 ZR800 (European) PARTS LIST

### Water Pipe

ITEM NAME	PART NUMBER	QUANTITY
SCREW-PAN-CROS,5X14 (Ref # 220)	220AA0514	4
GASKET,RESERVOIR TANK CAP (Ref # 11009)	11009-1145	1
CAP (Ref # 11012)	11012-1084	1
BRACKET,THERMOSTAT (Ref # 11056)	11056-1800	1
CAP-ASSY (Ref # 14075)	14075-0001	1
BODY,LWR (Ref # 16160)	16160-0725	1
HOSE-COOLING,PUMP-CYLINDER (Ref # 39062)	39062-0605	1
HOSE-COOLING,OVER FLOW (Ref # 39062A)	39062-0632	1
HOSE-COOLING,RAD.-PIPE (Ref # 39062B)	39062-0673	1
HOSE-COOLING,HEAD-THERMO (Ref # 39062C)	39062-0674	1
HOSE-COOLING,THERMO-RAD. (Ref # 39062D)	39062-0675	1
HOSE-COOLING,DRAIN (Ref # 39062E)	39062-1610	1
PIPE-WATER (Ref # 39192)	39192-0073	1
PIPE-WATER (Ref # 39192A)	39192-0566	1
PIPE-WATER (Ref # 39192B)	39192-0568	1
RESERVOIR (Ref # 43078)	43078-0559	1
COVER-SEAL (Ref # 49016)	49016-0600	1
THERMOSTAT (Ref # 49054)	49054-0004	1
CAP-ASSY-PRESSURE (Ref # 49085)	49085-1066	1
FITTING (Ref # 92005)	92005-0744	1
WASHER,6.5X16X2 (Ref # 92022)	92022-1565	2
CLAMP,TUBE (Ref # 92037)	92037-147	3
RIVET (Ref # 92039)	92039-0709	1
RIVET (Ref # 92039A)	92039-0722	1
RING-O,20.8X2.4 (Ref # 92055)	92055-0114	2
RING-O,53.5X2.6 (Ref # 92055B)	92055-112	1
RING-O,18.54X2.6 (Ref # 92055C)	92055-1350	2
RING-O (Ref # 92055D)	92055-1402	1
BOLT,FLANGED-SMALL,6X25 (Ref # 92151)	92151-1930	2

## 2013 ZR800 (European) PARTS LIST

### Water Pipe

ITEM NAME	PART NUMBER	QUANTITY
BOLT,6X12 (Ref # 92151A)	92151-1997	5
BOLT,FLANGED,6X20 (Ref # 92154)	92154-0776	2
BOLT,FLANGED,6X12 (Ref # 92154A)	92154-1050	2
CLAMP (Ref # 92171)	92171-0179	8
CLAMP,L=60 (Ref # 92171A)	92171-0652	2