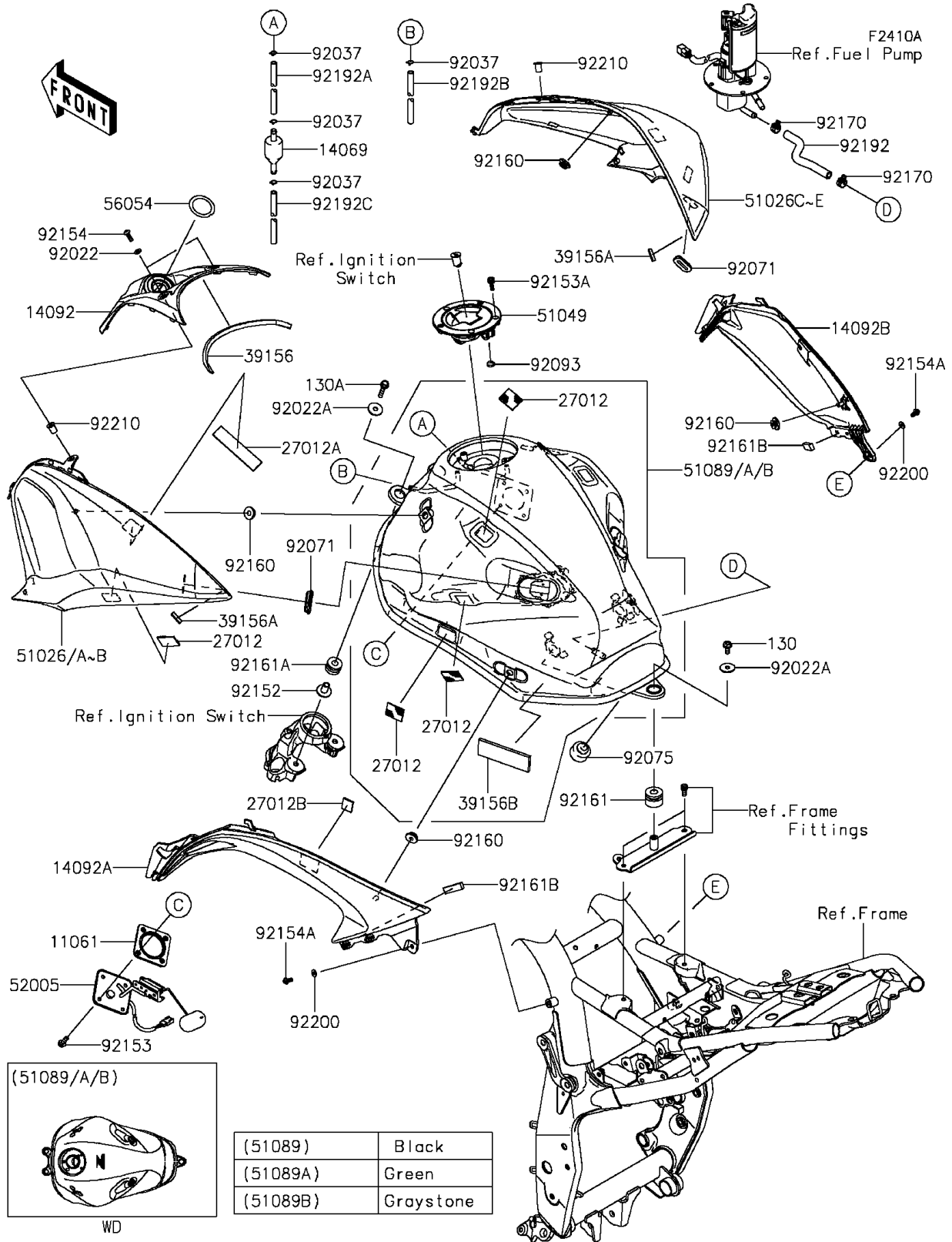


# 2015 ZR800 (European) PARTS DIAGRAM

Fuel Tank(AFF)



## 2015 ZR800 (European) PARTS LIST

### Fuel Tank(AFF)

ITEM NAME	PART NUMBER	QUANTITY
GASKET,FUEL GAUGE (Ref # 11061)	11061-0797	1
BREATHER,TANK (Ref # 14069)	14069-0008	1
COVER,IGNITION SWITCH (Ref # 14092)	14092-1090	1
COVER,KNEE GRIP,LH (Ref # 14092A)	14092-1091	1
COVER,KNEE GRIP,RH (Ref # 14092B)	14092-1092	1
HOOK (Ref # 27012)	27012-0170	8
HOOK,DUAL LOCK,20X90 (Ref # 27012A)	27012-0746	2
HOOK,20X20X3.0 (Ref # 27012B)	27012-0772	2
PAD,IGNITION SWITCH (Ref # 39156)	39156-0995	1
PAD,5X20X3 (Ref # 39156A)	39156-0999	2
PAD,93X30X5 (Ref # 39156B)	39156-1858	2
COVER TANK,LH,P.S.WHITE (Ref # 51026)	51026-0053-25Y	1
COVER TANK,LH,F.EBONY (Ref # 51026A)	51026-0053-45L	1
COVER TANK,LH,M.S.BLACK (Ref # 51026B)	51026-0053-660	1
COVER TANK,RH,P.S.WHITE (Ref # 51026C)	51026-0054-25Y	1
COVER TANK,RH,F.EBONY (Ref # 51026D)	51026-0054-45L	1
COVER TANK,RH,M.S.BLACK (Ref # 51026E)	51026-0054-660	1
CAP-TANK,FUEL (Ref # 51049)	51049-0714	1
BOLT-FLANGED,6X14 (Ref # 130)	130BA0614	1
BOLT-FLANGED,6X30 (Ref # 130A)	130BA0630	2
TANK-COMP-FUEL,M.S.BLACK (Ref # 51089)	51089-5179-660	1
TANK-COMP-FUEL,C.F.B.GREEN (Ref # 51089A)	51089-5180-35K	1
TANK-COMP-FUEL,M.F.R.GRAYSTONE (Ref # 51089B)	51089-5187-35B	1
GAUGE,FUEL (Ref # 52005)	52005-0721	1
MARK,IGNITION (Ref # 56054)	56054-1133	1
WASHER,NYLON,5.3X11.5X1.5 (Ref # 92022)	92022-1521	2
WASHER,7X24X1.6 (Ref # 92022A)	92022-228	3
CLAMP,TUBE (Ref # 92037)	92037-010	4
GROMMET (Ref # 92071)	92071-1187	2

## 2015 ZR800 (European) PARTS LIST

### Fuel Tank(AFF)

ITEM NAME	PART NUMBER	QUANTITY
DAMPER (Ref # 92075)	92075-015	2
SEAL,FUEL TANK CAP (Ref # 92093)	92093-1030	1
COLLAR,6.5X10X17.6 (Ref # 92152)	92152-1655	2
BOLT,FLANGED,5X12 (Ref # 92153)	92153-1421	4
BOLT,SOCKET,5X16 (Ref # 92153A)	92153-1616	3
BOLT,SOCKET,5X16 (Ref # 92154)	92154-0026	2
BOLT,SOCKET,5X10 (Ref # 92154A)	92154-0215	2
DAMPER (Ref # 92160)	92160-1613	4
DAMPER,12X28X21 (Ref # 92161)	92161-1468	1
DAMPER,10X24X15 (Ref # 92161A)	92161-1482	2
DAMPER,10X35X6 (Ref # 92161B)	92161-1539	2
CLAMP (Ref # 92170)	92170-1492	2
TUBE,FUEL (Ref # 92192)	92192-0593	1
TUBE,BREATHER (Ref # 92192A)	92192-0798	1
TUBE,6X9X930 (Ref # 92192B)	92192-1311	1
TUBE,6X9X1095 (Ref # 92192C)	92192-1312	1
WASHER,NYLON,5.3X11.5X0.5 (Ref # 92200)	92200-1480	2
NUT,WELL,5MM (Ref # 92210)	92210-0498	2