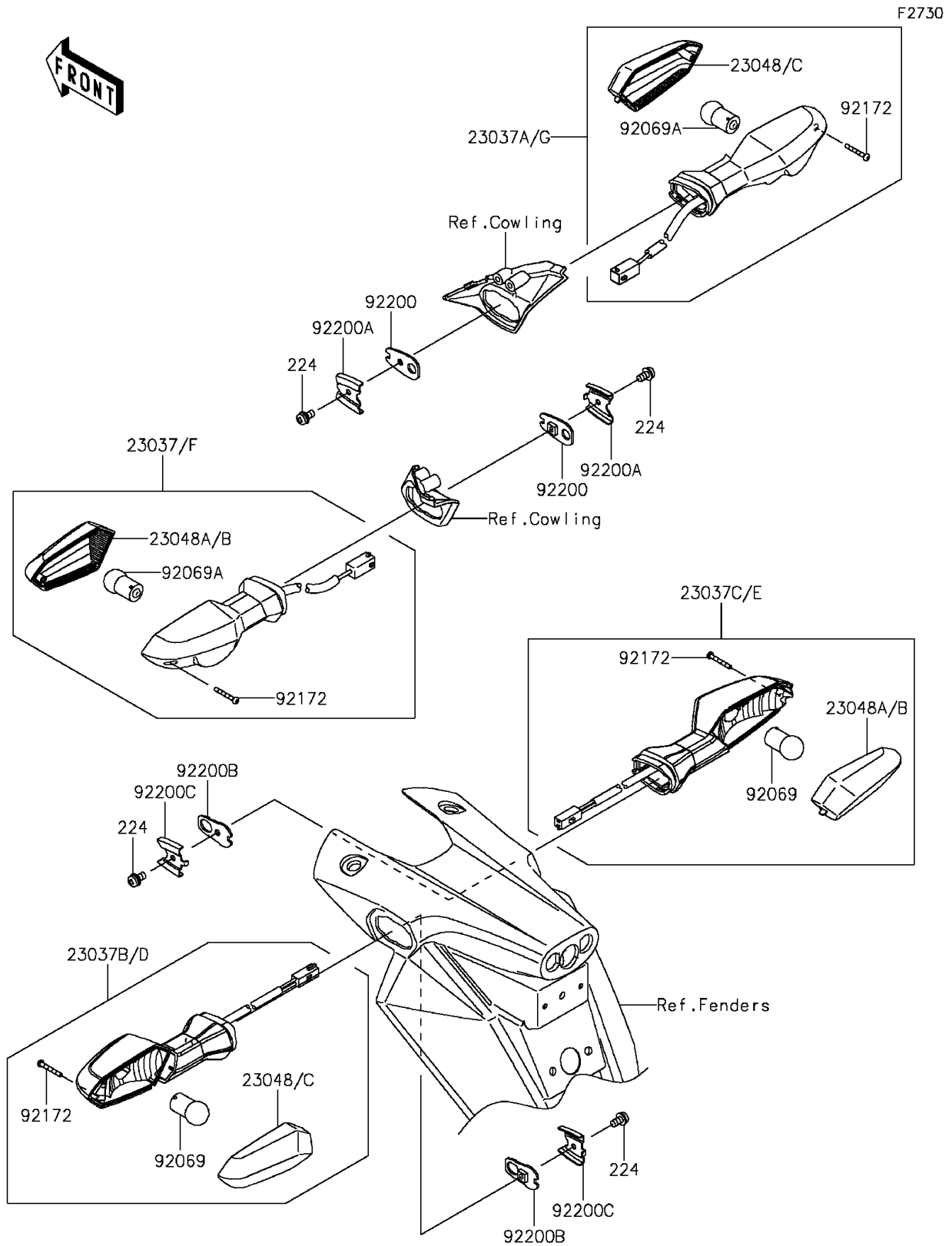


# 2015 ZR800 (European) PARTS DIAGRAM

Turn Signals



## 2015 ZR800 (European) PARTS LIST

### Turn Signals

ITEM NAME	PART NUMBER	QUANTITY
SCREW-PAN-WP-CROS,4X8 (Ref # 224)	224AB0408	4
LAMP-ASSY-SIGNAL,RR,LH (Ref # 23037D)	23037-0304	1
LAMP-ASSY-SIGNAL,RR,RH (Ref # 23037E)	23037-0305	1
LAMP-ASSY-SIGNAL,FR,LH (Ref # 23037F)	23037-0310	1
LAMP-ASSY-SIGNAL,FR,RH (Ref # 23037G)	23037-0311	1
LENS-SIGNAL LAMP,FR,LH & RR,RH (Ref # 23048B)	23048-0025	2
LENS-SIGNAL LAMP,FR,RH & RR,LH (Ref # 23048C)	23048-0026	2
BULB,12V 10W (Ref # 92069)	92069-0024	2
BULB,12V 10W (Ref # 92069A)	92069-0058	2
SCREW,2.9X22 (Ref # 92172)	92172-0395	4
WASHER,SIGNAL LAMP (Ref # 92200)	92200-0164	2
WASHER,SIGNAL LAMP (Ref # 92200A)	92200-0165	2
WASHER,NUT 4MM (Ref # 92200B)	92200-0854	2
WASHER (Ref # 92200C)	92200-0855	2