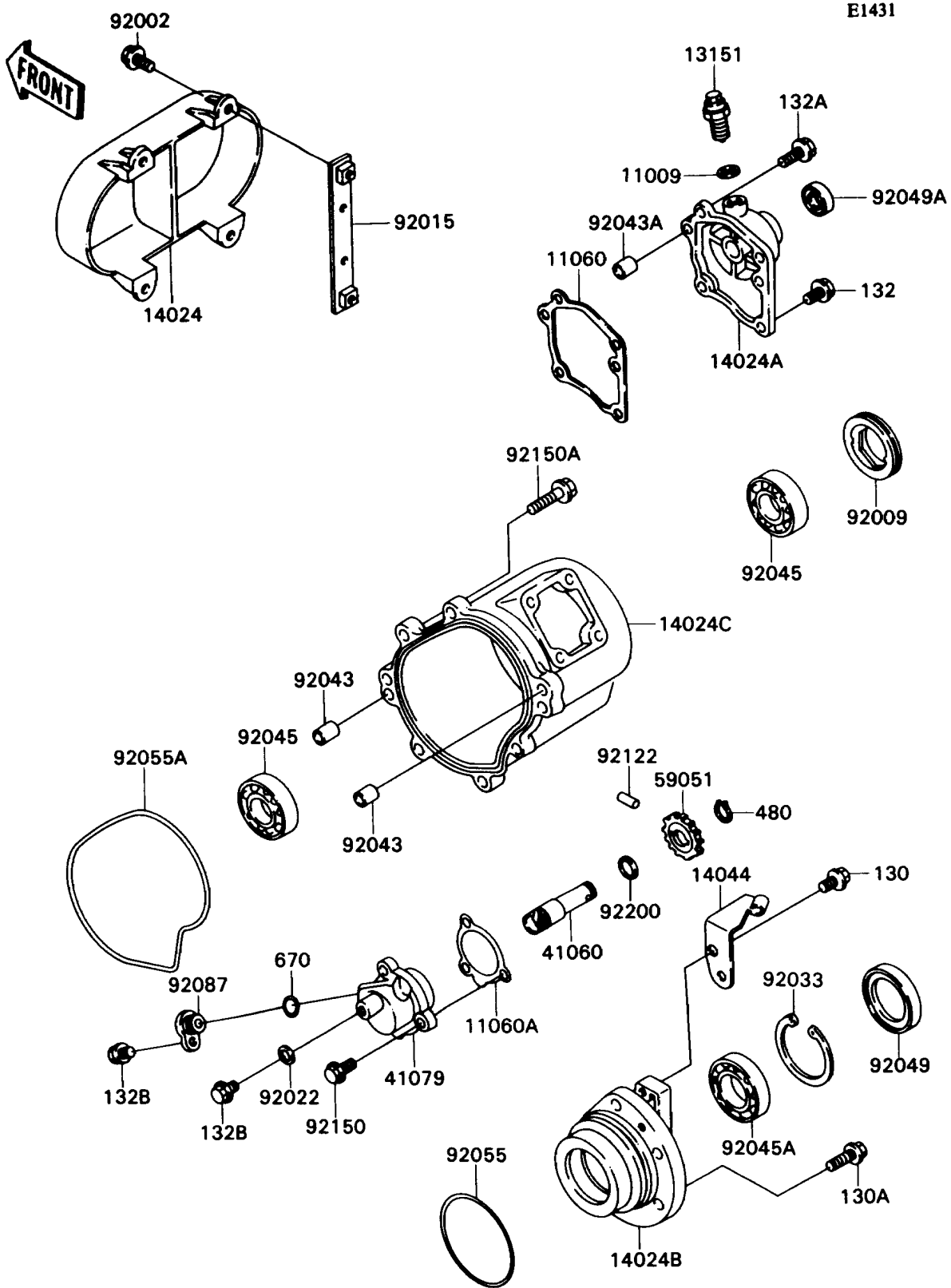


# Mule 2010 PARTS DIAGRAM

## Engine Cover



# Mule 2010 PARTS LIST

## Engine Cover

ITEM NAME	PART NUMBER	QUANTITY
GASKET,10.5X16X1,DRAIN PLUG (Ref # 11009)	92065-058	1
GASKET,CHANGE COVER (Ref # 11060)	11060-1243	1
GASKET,METER GEAR CASE (Ref # 11060A)	11060-1246	1
SWITCH-COMP,NEUTRAL (Ref # 13151)	13151-1069	1
COVER,DUCT (Ref # 14024)	14024-1558	1
COVER,CHANGE MECHANISM (Ref # 14024A)	14024-1780	1
COVER (Ref # 14024B)	14024-1782	1
COVER (Ref # 14024C)	14024-1783	1
HOLDER-CABLE (Ref # 14044)	14044-1065	1
GEAR-METER SCREW (Ref # 41060)	41060-1136	1
CASE-METER GEAR (Ref # 41079)	41079-1059	1
GEAR-SPUR,13T (Ref # 59051)	59051-1219	1
BOLT,6X16 (Ref # 92002)	92002-1570	4
SCREW (Ref # 92009)	92009-1290	1
NUT,AIR FILTER (Ref # 92015)	92015-1785	2
WASHER,6.1X12X1 (Ref # 92022)	92022-077	1
RING-SNAP,55MM (Ref # 92033)	92033-1274	1
PIN,DOWEL,10X14 (Ref # 92043)	92043-1037	2
PIN,6.2X8X14 (Ref # 92043A)	92043-1263	2
BEARING-BALL,TMB304CCM (Ref # 92045)	92045-1142	2
BEARING-BALL,6006 (Ref # 92045A)	92045-1208	1
SEAL-OIL,TC35X55X8 (Ref # 92049)	92049-1298	1
SEAL-OIL,TB13225.5 (Ref # 92049A)	92051-005	1
RING-O,74.6X2.4 (Ref # 92055)	92055-1357	1
RING-O (Ref # 92055A)	92055-1450	1
BUSHING-METER GEAR (Ref # 92087)	92087-1058	1
ROLLER,3X15.8 (Ref # 92122)	92122-1126	1
BOLT,6X20 (Ref # 92150)	92150-1010	3
BOLT,8X32 (Ref # 92150A)	92150-1370	7

# Mule 2010 PARTS LIST

## Engine Cover

ITEM NAME	PART NUMBER	QUANTITY
WASHER (Ref # 92200)	92200-1009	1
BOLT-FLANGED (Ref # 130)	130D0616	2
BOLT-FLANGED (Ref # 130A)	130D0825	5
BOLT-FLANGED-SMALL (Ref # 132)	132H0616	1
BOLT-FLANGED-SMALL (Ref # 132A)	132H0620	3
BOLT-FLANGED-SMALL,6X10 (Ref # 132B)	132J0610	2
CIRCLIP-TYPE-C,11MM (Ref # 480)	480J1100	1
O RING,10MM (Ref # 670)	670D1510	1